



# Community Builders Information Session

Campbelltown  
LGA  
4 November 2010



# Role of CPO

- Work strategically within LGA to encourage projects that meet community needs and reflect local priorities
- Discuss projects with community groups and organisations prior to submitting applications
- Collaboratively develop 3-4 year regional priorities for Community Builders program



# Social Planning

Aims to influence the underlying factors that determine the quality of life in Campbelltown

Based on sound social research and social justice principles

Based on quality community consultation

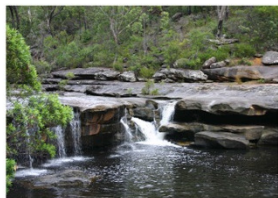
Identifies actions and strategies to effectively address disadvantage in Campbelltown



# Social Planning Documents

Key documents –

- Campbelltown Social Plan 2010 12
- Proposed Community Strategic Plan 2012 - 2022



# Social Plan 2010 - 2012



# Key Quality of Life Issues

- Population growth – Campbelltown and Macarthur
- Migration in and out of Campbelltown
- Age Structure – high youth population; future ageing population
- Housing - limited housing types; affordability
- Provision and management of community infrastructure
- Education and Employment – local skills vs. local jobs; youth unemployment
- Local areas of high social disadvantage in LGA



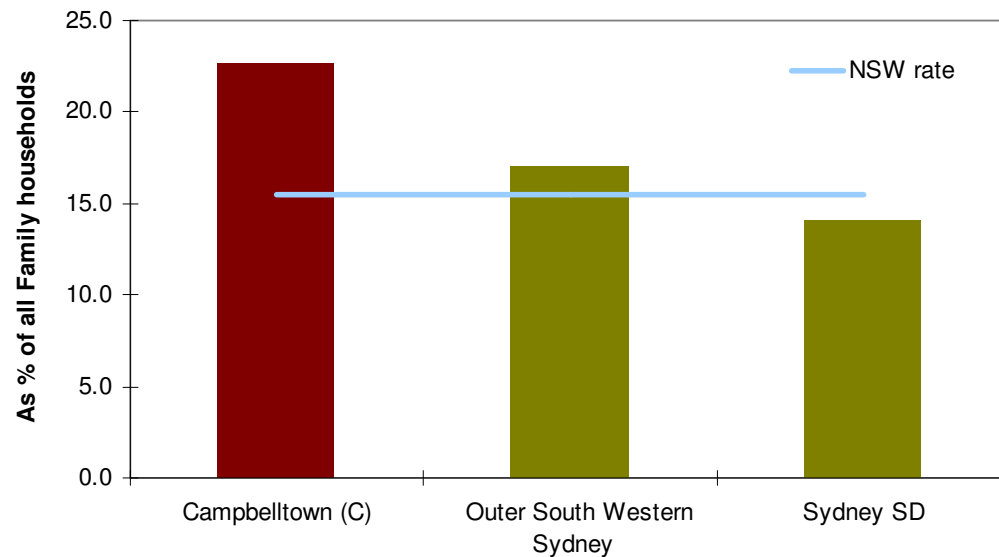
# Key Quality of Life Issues

- Poor health
- Community information and awareness
- Consultation and engagement
- Image of Campbelltown
- Transport
- Perceptions of crime
- Participation in recreation, culture and community events
- Council as leader and advocate for community issues
- Strengthening the capacity of the community sector



# Jobless Family households

There are 4,000 jobless family households in Campbelltown LGA

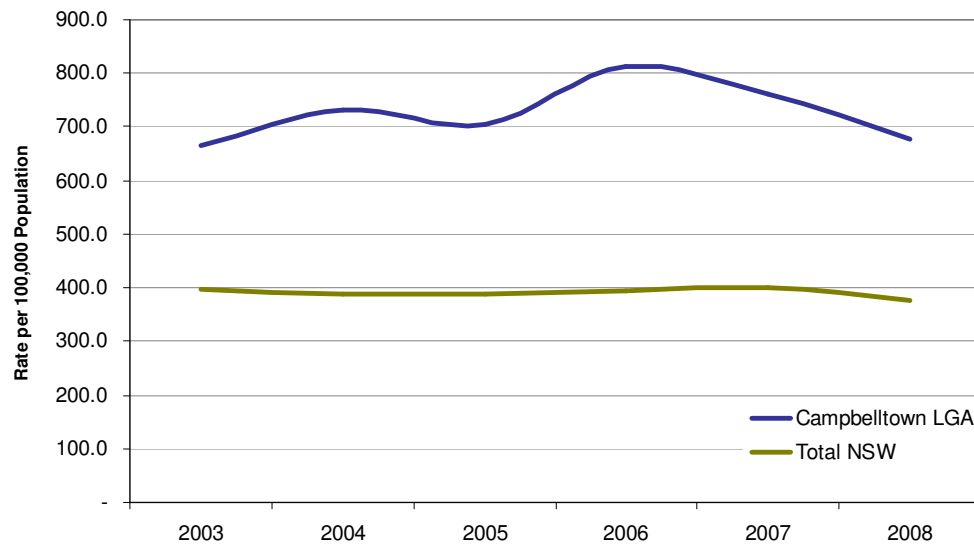


*One in four children under 15 years of age live in jobless family households at a rate 65% higher than Sydney SD*

Source: ABS Census of Population and Housing (2006)



# Domestic Violence



*In 2008, Campbelltown LGA had the highest rate of DV in Sydney – a rate 80% higher than NSW.*

Source: BOCSAR (2009)

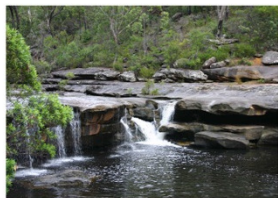


# Teen Pregnancy

Across all local government areas in Sydney SD, Campbelltown LGA has the;

- Highest rate of teen pregnancy,
- Highest rate of low birth weight babies
- Highest rate of mothers smoking whilst pregnant
- 3rd highest rate of infant mortality
- 7th lowest rate of antenatal commencements by 20 weeks gestation

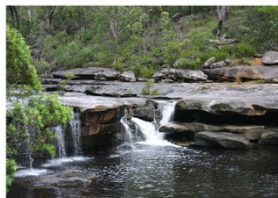
**Source:** PHIDU (2009) and ABS Census of Population and Housing (2006)



# Internet Access

- As of 2006, there were 16,400 households without any internet access at home
- 7,000 or 42% of households have children – a rate 55% higher than Sydney SD
  - There are at least 13,000 children in Campbelltown without internet access at home (1 in 4 children).
  - 44% of children in single parent households do not have internet access at home

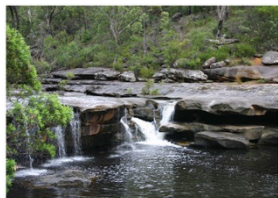
**Source:** ABS Census of Population and Housing (2006)



# Aboriginal and Torres Strait Islanders

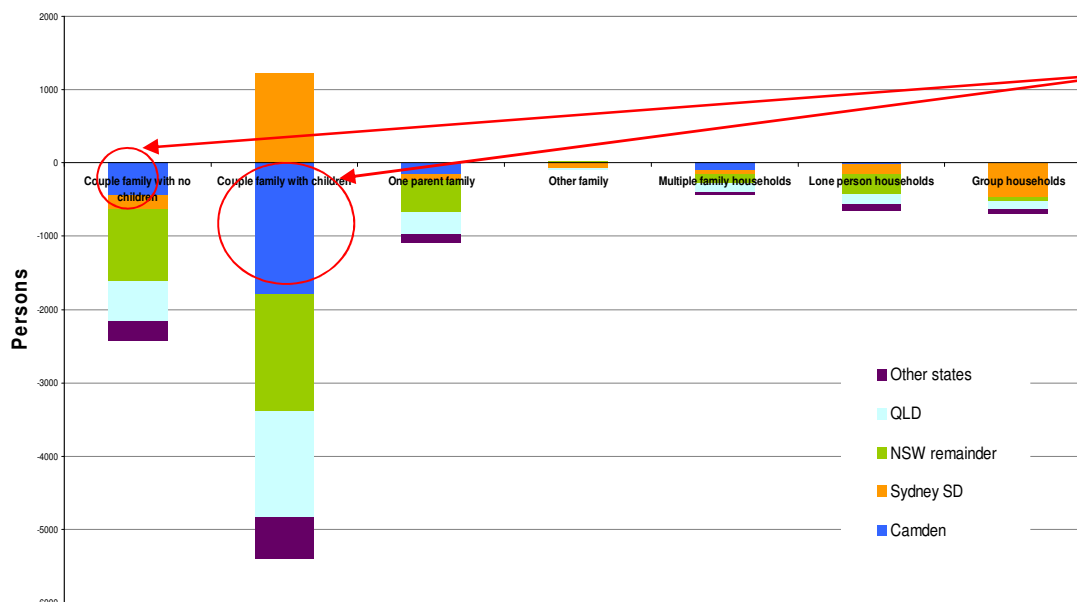
- 1 in 11 Indigenous persons in Sydney SD reside in Campbelltown LGA
- Median age of Indigenous persons in Campbelltown LGA is 17 compared with 32 years for non indigenous persons
- 31% of indigenous youth (15-24 years) either disengaged or unemployed

**Source:** ABS Census of Population and Housing (2006)



# Population Migration

## Middle class flight to Camden?



*Approx 1,000 families migrated to Camden LGA from Campbelltown LGA between 2001-2006*

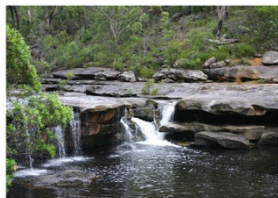
Source: ABS Census of Population and Housing (2006)



# Persons with a disability

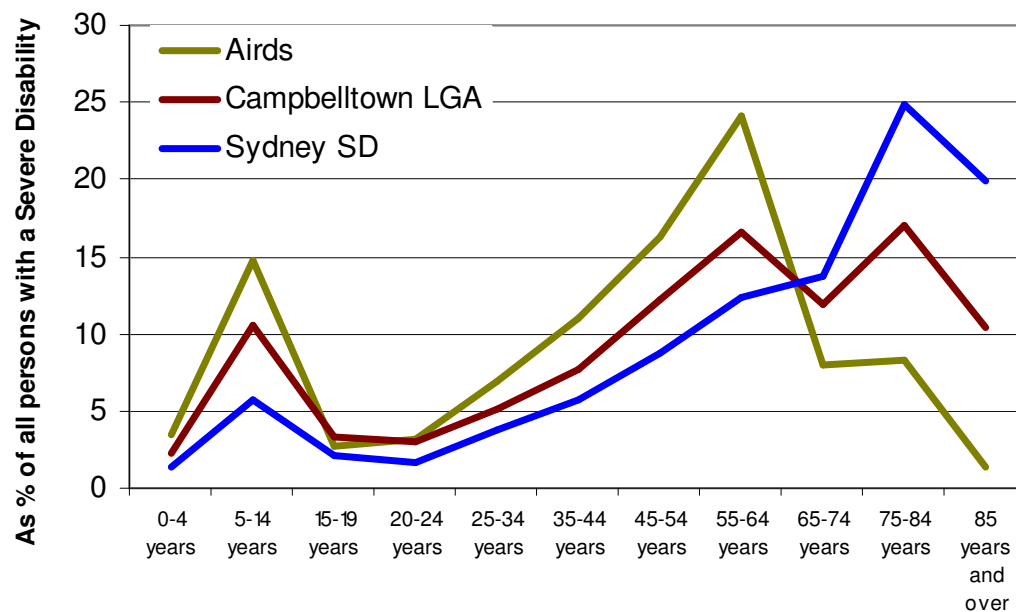
- There are approximately 5,200 persons on Disability Support Pension -36% higher rate than Sydney SD.
- Approx 11,300 persons or 10% of population (15 years+) provide unpaid assistance to persons with Disability (much higher in Airds-17%)
- There are approximately 5,760 persons with a profound or severe disability (4% of Pop'n). Again, higher in Airds (8.8%)
- Of which only 600 live in appropriate supported accommodation

**Source:** ABS Census of Population and Housing (2006)



# Key Findings so far...

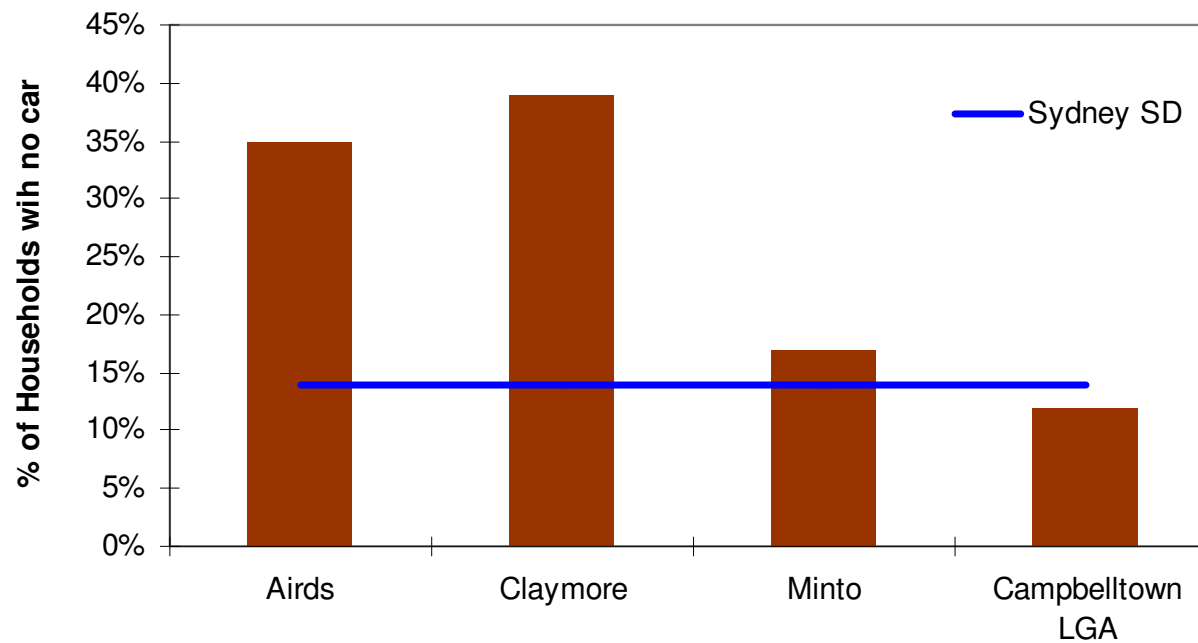
## Age profile of Persons with a severe/profound disability in Campbelltown



Source: ABS Census of Population and Housing (2006)

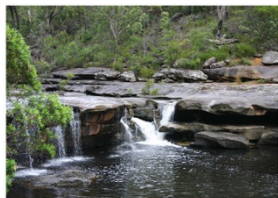


# Households without a car

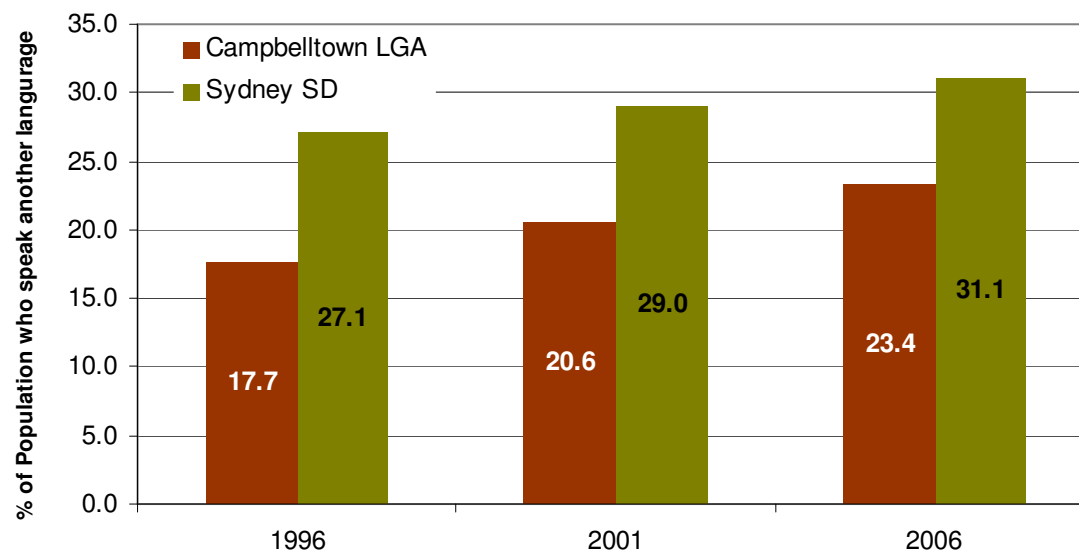


*There are approximately 5,150 households without a car in Campbelltown LGA*

Source: ABS Census of Population and Housing (2006)

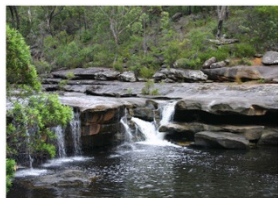


# People who speak another language at home



*Approx 31,500 persons in Campbelltown LGA who speak another language at home. This is an increase of 28% since 1996*

**Source:** ABS Census of Population and Housing (2006)



## Total population who speak another language

Language Spoken at home	Persons
Arabic	3,872
Spanish	2,482
Samoan	2,433
Hindi	2,343
Tagalog (excludes Filipino)	1,612
Bengali	1,398
Filipino (excludes Tagalog)	1,088
Lao	1,000
Cantonese	965
Italian	892
Greek	878
Vietnamese	859
Mandarin	727
Croatian	688
Polish	662
Tongan	530
Urdu	529
French	519
Khmer	407
Indonesian	362

*In total, 133 different languages are spoken in the Campbelltown area. The top 20 are shown here.*

**Source:** ABS Census of Population and Housing (2006)

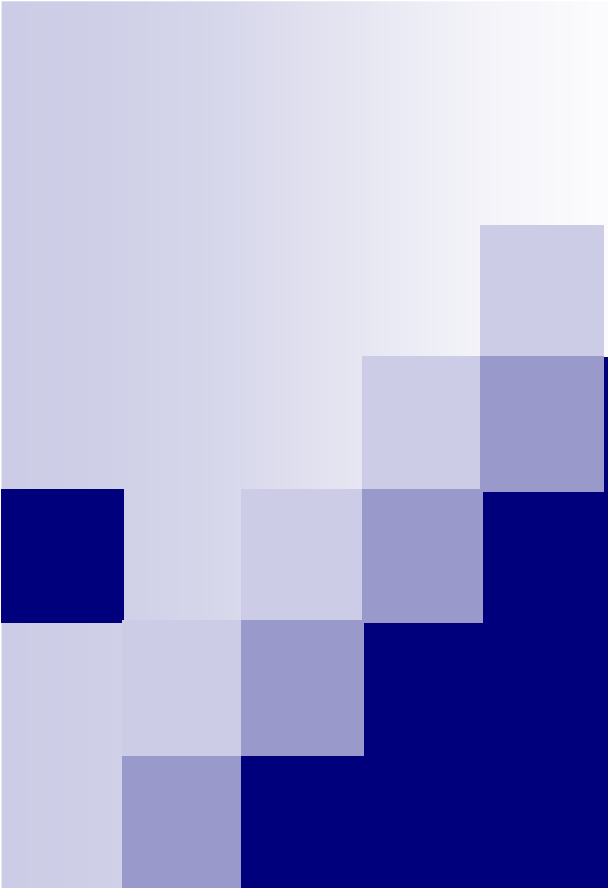


## For further information...

- Angela Lonergan – Coordinator, Community Development Team on 46 45 4577 or

[angela.lonergan@campbelltown.nsw.gov.au](mailto:angela.lonergan@campbelltown.nsw.gov.au)

[www.campbelltown.nsw.gov.au](http://www.campbelltown.nsw.gov.au)



# **Community Builders Program 2010-2011**



# Community Builders Fixed Term

- Community Builders program
- What you need to address
- How to apply
- Project example



# Community Builders

- The **Community Builders Fixed Term** program operates in 6 regions in NSW -  
Metro South West; Metro West; Southern;  
Northern; Hunter and Central Coast
- Community Builders is a funding program which aims to strengthen communities & particularly the disadvantaged groups within the community.



# Community Builders

Services that are have been receiving renewable funding under the **Community Services Grants Program (CSGP)** have been moved into the following funding streams.

## **Early Intervention & Placement Prevention (EIPP) Community Builders (renewable)**

### **Early Intervention & Placement Prevention (EIPP)**

- Services that provided a direct service to children, young people and families have been placed in this stream eg Family Support services

### **Community Builders (renewable)**

- Services that have a community strengthening focus have been placed in this stream eg. Neighbourhood Centres

**This session is not about Community Builder (renewable).**

**This session is about Community Builders (fixed term) only.**



# Community Builders

- Projects ranging in value between \$10,000 and \$100,000 per year for up to 3 years
- Projects across the range of one year, two years and three years are encouraged



# Community Builders

- The program was developed in response to a growing body of evidence that suggests that community strengthening is an effective way of reducing inequality and disadvantage.
- Community strengthening is about building the capacity of and opportunities for people to actively engage in their community & supporting the relationships & networks that are developed.



# Community Builders

Research shows that strong communities are more likely to be able to cope with change and respond to issues within their own resources, leading to:

- fewer resource intensive interventions;
- reduction in inequality and disadvantage;
- a stronger base to draw on in difficult or crisis situations.



# What you need to address

Your application will need to

- Meet **eligibility** criteria
- Address a **regional priority**
- Address aspect of **community strength**
- Fit within a service **Model (SAD)**
- Nominate **target community (location & identity)**
- Nominate a **priority group**
- Provide **evidence** (project a community priority & evidence for selection of priority group)



# Community Builders

- Any questions?



# Eligibility

*You will need to meet the following eligibility  
Criteria*

**Must** have a valid ABN and are:

- incorporated not-for-profit organisation
- a local council
- government agency (only where there is no alternative)



# Eligibility

The proposed project addresses:

- one or more priorities in the NSW State Plan and
- one or more stated CB regional priorities and
- one or more CB service activity descriptions
- one or more aspects of community strength
- geographic area not greater than a CS region
- a clear exit strategy/ does not create any ongoing obligation or expectations in the community.



# Eligibility

The proposed project is not:

- a direct service of another government agency
- eligible for funding under another state or federal grants program or
- duplicating projects already in operation in the relevant community or
- have been previously funded for the same purpose in the same community or



# Eligibility

The proposed project is not:

- a direct service to individual known clients
- seeking funds for a motorised vehicle.
- seek physical infrastructure funds that comprise more than 50% of the total fixed term funds requested or
- be an extension or continuation of an existing service.



# Community Builders

- Any questions?



# Regional priorities

*You will need to address one or more regional priority*

- Create an inclusive and accessible community by building on existing resources and skills to provide all community members with opportunities for social, cultural and economic participation in community life
- Increase the capacity of community groups and services to strengthen local communities



## Regional Priorities (cont.)

- Build community capacity to acknowledge, value, celebrate and respond to diversity
- Build community trust and confidence to increase a sense of belonging and well being



# Community Builders

- Any questions?



# Aspect of Community Strength

*You will need to address one or more aspects of community strength:*

- Connected
- Respectful
- Participatory
- Resourceful
- Trusting



# Community Builders Models

*You will need to fit within one of the three CB models /  
Service Activity Descriptions (SAD):*

- Community Capacity Building
- Community Skills Development
- Community Sector Development



# Community Capacity Building

## Community Capacity Building projects:

- Develop stronger links between community members and assist members of disadvantaged communities to participate in community life and activities.
- Increase members use and knowledge of existing community resources. They may provide information, set up peer networks, organise community projects or activities eg. cultural events, community festivals etc.



# Community Skills Development

## Community Skills Development projects:

- Are training and/or activity projects that provide information, training or hands-on experience to members of the community so that knowledge, skills and abilities are improved.
- Increase skills so that people are more able to participate and be included in the community by providing activities such as; training in mentoring, leadership, managing community groups and other skills development through participation in activities which benefit the whole community.



# Community Sector Development

## Community Sector Development projects

- Are only undertaken between organisations to build partnerships & work collaboratively on issues affecting their community.
- Aim to enhance the capacity of local community networks.
- Activities may include; sharing information, training/skills development, assisting orgs to participate in consultation & evaluation or programs & building new networks.



# Community Builders

- Any questions?



# Target Community

*You will need to identify the target community*

- Nominate a **Community of Location**
- Nominate a **Community of Identity**



# Priority Group

Community Builders aims to connect the more disadvantaged members of a community with their broader community, thereby strengthening the whole community

*You will need to identify the priority group*

- identify the group of people who are disadvantaged within the community (priority group)



# Priority Groups

You must identify at least one, and up to three, priority groups

- Socially disadvantaged
- Financially disadvantaged
- Socially and financially disadvantaged



# Priority Groups

- 2<sup>nd</sup> & 3<sup>rd</sup> priorities can be used to refine the focus of the project

Community of location – Newpark

Community of identity – Aboriginal people

Priority 1 - socially disadvantaged people

Priority 2 – women

Priority 3 – 18 to 24 yrs

- Priority groups must be a sub-set of the nominated ‘community of location’ and ‘community of identity’. Can not be the same group of people



# Priority Groups

- When a project is Community Sector Development, the priority group is selected from the client groups of the ‘community of identity’ of service providers who are the target population of the project.

## **Project – 2 day seminar for Newpark community workers on ‘Evaluation in Community Development Projects’.**

- Community Location: Newpark
- Community Identity: Orgs. working with the Newpark community
- Priority group 1 : Socially & financially disadvantaged people living in Newpark
- Priority group 2: Aboriginal & Torres Strait Islander people



# Community Builders

- Any questions?



# Consultation & Evidence

*You will need to provide evidence*

- provide evidence to show that the project is both supported & needed within the nominated community
- provide evidence for the selection of the priority group ie that the priority group is disadvantaged




# Consultation / Evidence

- **Local council representative/Social Plan**
- Community Builders regional priorities
- NSW State Plan
- ABS Census data
- Consultation or surveys undertaken
- Local newspaper articles
- Published research and / or data
- Other govt. agencies & or publications



# How to apply for funding

- The funding round in 2010 opened 1 November & closes 8 December 2010
- Applicants can access all information on the Community Builders website at:  
[www.communitybuilders.nsw.gov.au](http://www.communitybuilders.nsw.gov.au)



# How to apply for funding

## ***On-line applications***

- You are encouraged to use the on-line application. On-line applications can be saved while in progress and returned to later. There is also an on-line 'help' function.
- Once the on-line form has been completed, applicants need to print & retain a signed copy.



# Project Example

Project Name: **Friendly Neighbourhoods**

Falls under **Community Capacity Building** model

Aspects of community strength:

- **A connected community**
- **A respectful community**
- **A trusting community**



# Project Example

## Target community

- **Newpark LGA** – (community of location)
- **All people in the location** (community of identity)

## Priority group:

- **Financially & socially disadvantaged people living in Newpark**



# Friendly Neighbourhoods

## **Project results:**

The project will result in more people who live in Newpark Housing Estate and community feeling more **connected** to each other and their community and more **respectful and trusting** of each other

## **Executive summary:**

The Friendly Neighbourhoods project will create a stronger, more connected community in Newpark with an emphasis on socially & financially disadvantaged residents in the broader community. The project will establish precinct committees made up of local volunteers to implement ideas on ways to meet and welcome community members and increase participation in community events. The ideas about what makes a good community and how that will be achieved will be based on information from local residents

## Task & Activities

Activities in CCB	Tasks	Duration of task (mths)
1. Using Community Infrastructure	<ul style="list-style-type: none"> <li>■ Recruit 4 volunteers to coordinate project</li> <li>■ Survey 200 residents of Newpark Housing Estate on their views of what makes a good neighbour &amp; how to meet new neighbour</li> </ul>	2 months 3 months
2. Linking People	<ul style="list-style-type: none"> <li>■ Implement 5 ideas on ways of meeting neighbours e.g. tea bags</li> <li>■ Organise neighbour networking table fortnightly at the local corner store and coffee shop</li> <li>■ Establish 5 neighbourhood network group for welcoming new neighbours</li> </ul>	7 months 3 months 4 months
3. Providing Information	<ul style="list-style-type: none"> <li>■ Liaise with local precinct committee to send out 200 fridge magnets once a year with their precinct committee leaflets</li> <li>■ Distribute 'What Makes a Good Neighbour' on a fridge magnet for all residents of Newpark</li> <li>■ Promote the core values of neighbourliness as identified for the housing estate through a monthly newsletter</li> </ul>	4 months 5 months 4 months
4. Community Activities	<ul style="list-style-type: none"> <li>■ Invite (through newsletter) 200 neighbours to participate in no cost monthly activities e.g. street parties, walking trains etc.</li> </ul>	3 months



# Process

Once applications are received and found to be eligible they will be assessed by a regional assessment panel who will be guided by Community Builders Regional Assessment Panel Guidelines and the *NSW Government Procurement Guidelines*.



# Contracts

**The contract for approved projects will comprise of the following:**

- Service Agreement
- Service Specification
- Original Application Form

Projects must start within 3 months of the Service Agreement being signed by all parties.



# Resources

- Local council Angela Lonergan 4645 4577
- Community Builders website for FAQs and program information

[www.communitybuilders.nsw.gov.au](http://www.communitybuilders.nsw.gov.au)