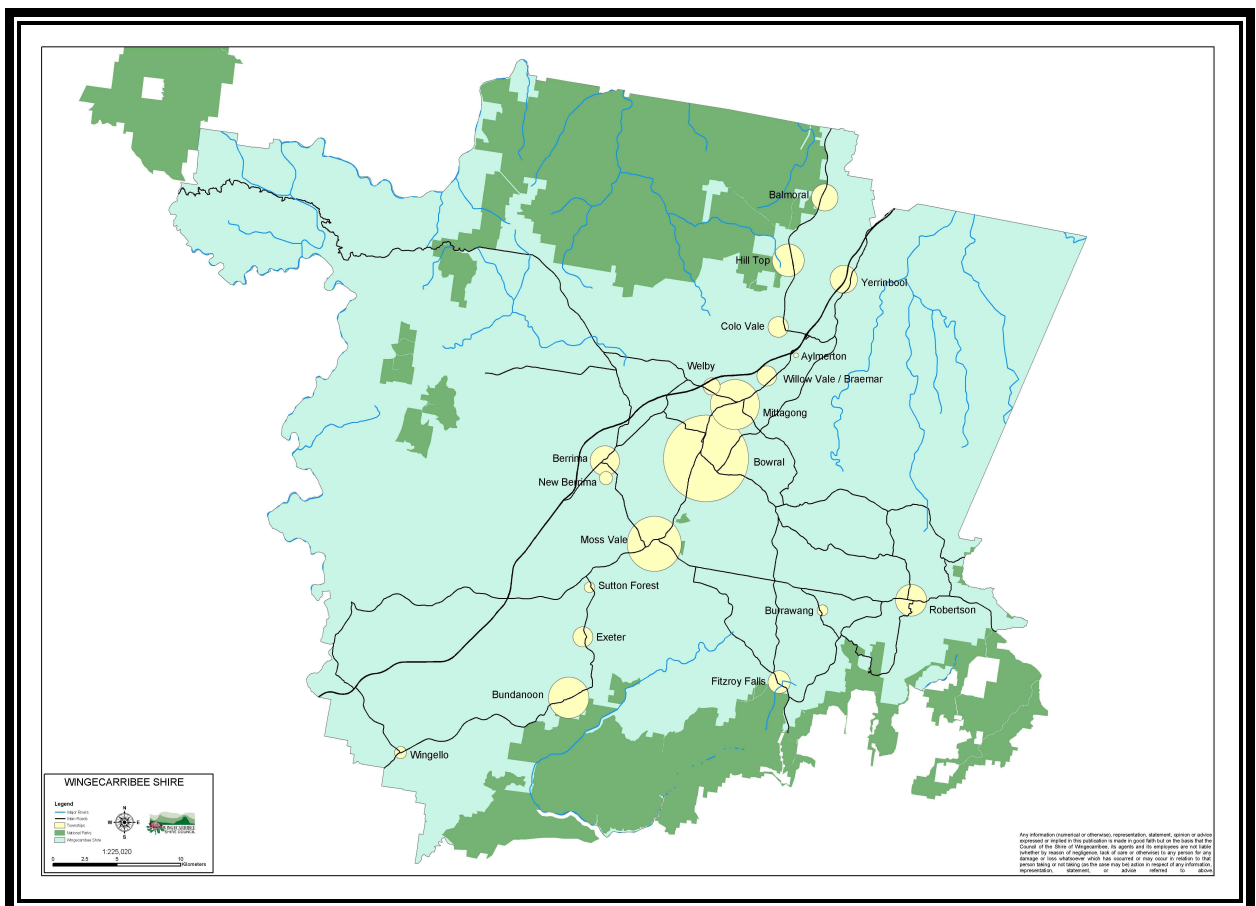




Wingecarribee Shire Community Profile 2006



Wingecarribee Shire Community Profile 2006:

Copies of this document may be viewed on Wingecarribee Council's web site www.wsc.nsw.gov.au, at Shire Libraries or Customer Services located at the Shire Civic Centre in Elizabeth Street, Moss Vale. Copies can also be obtained by contacting Council's Strategic Planning Branch on 4868 0861 or by emailing wscmail@wsc.nsw.gov.au.

Disclaimer:

While reasonable effort and care was taken in the preparation of this document, Wingecarribee Council accepts neither responsibility nor liability in respect to any omission, error, loss or consequence caused by the use of this document for whatever purpose.

Contents

1.	Summary	p.6
2.	Context	p.8
3.	Location	p.9
4.	Environment	p.9
5.	Settlement	p.10
6.	Industry	p.11
7.	Transportation	p.11
8.	Population	p.12
9.	Population Growth	p.12
10.	Population Change	p.13
11.	Population Distribution	p.14
12.	Population Age Profile	p.17
13.	Aboriginal and Torres Strait Islander Persons	p.19
14.	People with a Disability	p.20
15.	Persons Born Overseas	p.22
16.	Religious Affiliation	p.24
17.	Marital Status	p.24
18.	Households	p.24
19.	Household Size	p.25
20.	Families and Children	p.25
21.	Unpaid Child Care	p.27
22.	Median Incomes	p.27
23.	Car Ownership and Commuting to Work	p.28
24.	Access to Information Technology	p.29
25.	Housing Types	p.29
26.	Home Ownership	p.30
27.	Rental Housing	p.30
28.	Social Housing	p.31
29.	Housing Cost	p.31
30.	Housing Affordability	p.32
31.	Education	p. 32
32.	Employment	p. 34
33.	Urban Centres and Surrounds Selected Data	p.36
34.	Northern Villages and Surrounds Selected Data	p.38
35.	Berrima and Surrounds Selected Data	p.40
36.	Bundanoon and Surrounds Selected Data	p.41
37.	Robertson and Surrounds Selected Data	p.43

List of Tables

Table 1.	Wingecarribee Population 2006
Table 2.	Population Illawarra Region and OSW Sydney Region 2006
Table 3.	Shire Population Comparisons 1991 - 2006
Table 4.	Shire Average Annual Growth Comparisons 1991 - 2006
Table 5.	Place of Usual Residence 5 Years and 1 Year Ago
Table 6.	Median Age Census Comparisons 1996 - 2006
Table 7.	Population Shire Towns 2006
Table 8.	Population Shire Villages 2006
Table 9.	Population Shire Rural Districts 2006
Table 10.	Shire Age Profile Census Comparisons 1996 - 2006
Table 11.	Age Profile 2006 Regional and State Comparisons
Table 12.	Shire Aboriginal and Torres Strait Islander (A&TSI) Persons 1996 - 2006
Table 13.	Aboriginal & Torres St. Islander Persons LGA & Regional Comparisons 2006
Table 14.	Shire Aboriginal and Torres Strait Islander Persons Age Profile 2006
Table 15.	Shire Need for Assistance People with a Profound or Severe Restriction 2006
Table 16.	Shire Age Profile People with a Profound or Severe Restriction 2006
Table 17.	Shire Unpaid Assistance to a Person with a Disability 2006
Table 18.	Shire Persons Born Overseas 2006
Table 19.	Shire Most Common Countries of Birth 2006
Table 20.	Persons Born Overseas LGA and Regional Comparisons 2006
Table 21.	Shire Countries of Birth and Language Spoken at Home 2006
Table 22.	Shire Most Common Religions 2006
Table 23.	Shire Marital Status 2006
Table 24.	Shire Households 2006
Table 25.	Households Region and State Comparisons 2006
Table 26.	Shire Families 2001 and 2006
Table 27.	Families Region and State Comparisons 2006
Table 28.	Shire Couple Families with Dependent Children 2001 and 2006
Table 29.	Shire Lone Parent Families with Dependent Children 2001 and 2006
Table 30.	Shire Unpaid Child Care 2006
Table 31.	Shire Unpaid Child Care by Age 2006
Table 32.	Shire Median Incomes Region and State Comparisons 2006
Table 33.	Median Incomes LGA Comparisons 2006 Illawarra Region
Table 34.	Median Income LGA Comparisons 2006 Outer South West Sydney
Table 35.	Shire Motor Vehicles per Household 2006
Table 36.	Shire Commuting to Work 2006
Table 37.	Shire Internet Connection Occupied Private Dwellings (OPD) 2006
Table 38.	Shire Housing Types 2001 and 2006
Table 39.	Shire Housing Tenure 2001 and 2006
Table 40.	Shire Landlord Type 2001 and 2006
Table 41.	Shire Housing Costs 2006
Table 42.	Shire School Attendance 2006
Table 43.	Shire Tertiary Education 2006
Table 44.	Shire Highest Year of School Completed 2006
Table 45.	Shire Non-school Qualifications 2006
Table 46.	Shire Field of Study 2006
Table 47.	Shire Industry 2006
Table 48.	Shire Occupations 2006
Table 49.	Shire Labour Force 2001 and 2006
Table 50.	Shire Labour Force by Age 2006
Table 51.	Shire Employment by Age 2006

Glossary of Terms and Acronyms

ABS	Australian Bureau of Statistics
Census	refers to the National Census of Population and Housing
CD	Collector District
DADHC	NSW Department of Ageing, Disability and Home Care
DOCS	NSW Department of Community Services
DOH	NSW Department of Housing
DOP	NSW Department of Planning
Illawarra	refers to the Illawarra region and to the ABS Statistical Division of Illawarra which encompasses the local government areas of Wollongong, Shellharbour, Kiama, Shoalhaven and Wingecarribee.
LGA	Local Government Area
Nation	refers to Australia
NSW	New South Wales
OPD	Occupied Private Dwelling
OSWS	refers to Outer South West Sydney planning region which comprises the local government areas of Camden, Campbelltown, Wollondilly and Wingecarribee.
SLA	Statistical Local Area
SS	State Suburb
UCL	Urban Centre-Locality
WSC	Wingecarribee Shire Council
Wingecarribee	refers to the Wingecarribee Shire Local Government Area

Data Sources

Australian Bureau of Statistics (ABS): www.abs.gov.au

Wingecarribee Shire

Community Profile 2006

1. Summary

Location

Wingecarribee Shire is located 75 kilometres from the south western fringe of Sydney and covers an expanse of 2,700 square kilometres. Environmental features, heritage and aesthetic appeal contribute to the Shire's unique character.

Settlement

The Shire's urban centre comprises three main towns; Mittagong, Bowral and Moss Vale situated in close proximity and home to 61% of the population. Located 20 kilometres further south is the smaller town of Bundanoon, home to another 6% of residents.

Villages scattered throughout the Shire collectively represent 17% of the population as do rural districts Shirewide.

Population

At Census 2006, the population was 42,272 residents with 1.3% identifying as of Aboriginal or Torres Strait Islander descent. Between 2001 and 2006 population growth slowed significantly to an average of 0.7% per annum.

The Shire is experiencing premature ageing reflected in a median age of 42 years and due to population ageing, outward movement of young people and in-migration of persons aged 55 years or over.

While over time the Shire is experiencing declining numbers of children and increasing numbers of older persons, the population is still relatively youthful. In 2006, the proportion of residents younger than 24 years at 32% was the same as that for persons aged 55 years and over.

About 4% of Shire residents will have a profound or severe disability, the majority being older than 65 years of age. Family or friends providing unpaid care for people with a disability represent 11% of persons aged 15 years and over.

While persons born overseas account for 15% of the Shire population, those who speak a language other than English at home represent only 4% of residents.

Households

In 2006, the Shire had 16,218 households. Change since 2001 has led to a decrease in family households and increasing lone persons who now represent 23% of all households, comparing similarly with NSW. Average household occupancy rate of 2.5 persons compares to 2.6 for NSW and Australia.

Families

In 2006, the Shire had 11,561 families, comprising 41% couple families with children, 43% couple only families and 14% one parent families.

Over 5,000 families are caring for dependent offspring. The majority (70%) are young families rearing only children younger than 15 years. Over a fifth of these families are headed by a lone parent.

Housing

Housing types are largely unchanged since 2001 and do not match well with the needs of lone persons, couples and other small households.

Separate housing accounts for 90% of occupied private dwellings. Higher density housing stocks such as villas or townhouses remain low at 9% in 2006. The Planning Department predicts population growth of 15,500 persons will equate to demand for 8,700 new dwellings in the years leading up to 2031.

The current stock of housing available for private rental is also low at 21% of occupied private dwellings, comparing to 28% for NSW in 2006. Lack of housing choice is contributing to affordability problems for lone person, couple and low income households seeking rental accommodation.

The Housing Department reports that housing affordability is steadily declining with home purchase for lower income households now less affordable than the average for Sydney. Median household and family incomes are lower than that for the State and nation.

Employment

Since the mid 1980s the Shire has experienced consistent decline in unemployment rates. At Census 2006 the overall unemployment rate was 4% and the number of unemployed persons was 813.

Most common industries are retailing, health and community services, manufacturing, construction, hospitality, education and training.

Wingecarribee Shire

Community Profile 2006

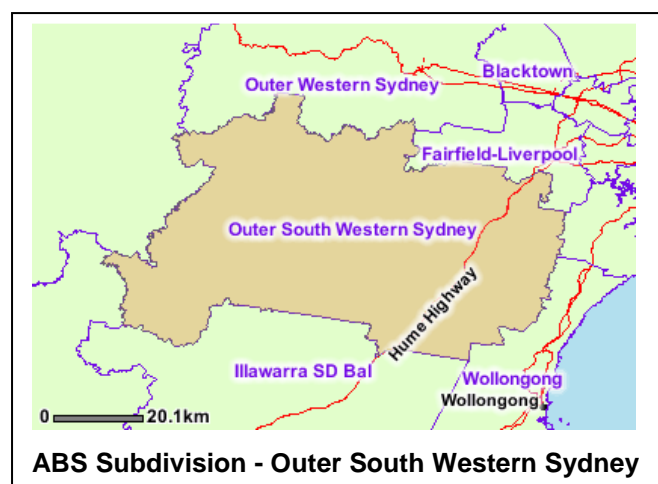
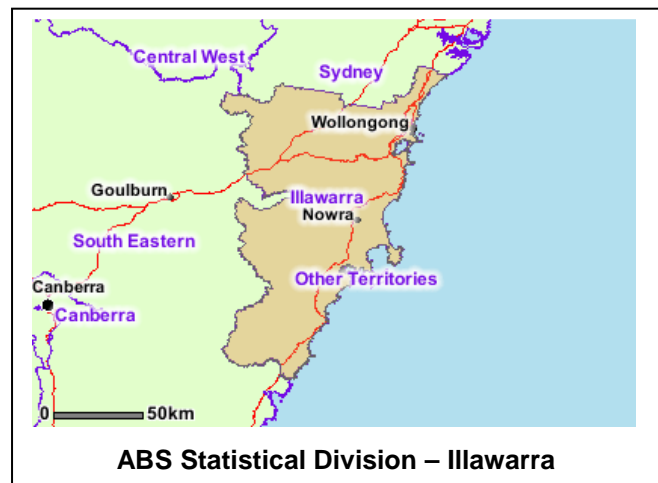
2. Context

This profile provides an overview of the Wingecarribee local government area using data sourced from the Australian Bureau of Statistics which undertakes a National Census of Population & Housing every five years.

Data was sourced from the last Census in 2006 and from previous counts of 2001 and 1996. Census data collection takes place within districts established by the ABS. Wingecarribee Shire comprises eighty four collector districts and forms part of the Illawarra Statistical Division along with Kiama, Wollongong, Shellharbour and Shoalhaven local government areas.

To offer insight as to how this Shire's demography compares within national, State and regional contexts, comparative data is included for Australia, NSW and Illawarra region. Depending upon context, the Shire forms part of Illawarra region or Outer South West Sydney. For example, it is considered part of OSW Sydney by the NSW Department of Community Services but forms part of Illawarra region for the Area Assistance Scheme region.

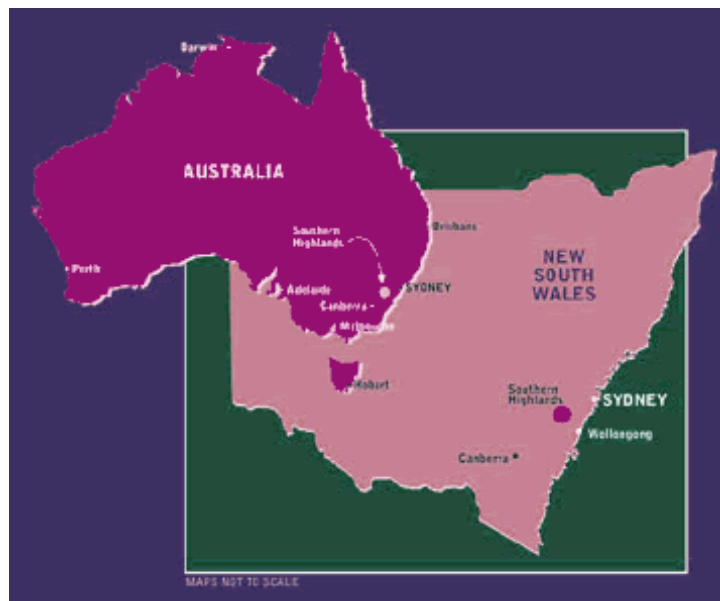
The ABS statistical division for OSW Sydney comprises Campbelltown, Camden and Wollondilly LGAs but excludes Wingecarribee Shire.



3. Location

The Wingecarribee Shire covers an expanse of 2,700 square kilometres, an area of the Great Dividing Range some 640 to 850 metres above sea level referred to as the Southern Highlands. The Shire lies within the Sydney – Canberra – Melbourne transport corridor on the Hume Highway and Southern rail line. The M5 motorway provides rapid access to Campbelltown, Liverpool and other key metropolitan centres within Sydney.

While located only 75 kilometres from the south western fringe of Sydney and 110 kms from the city centre, environment, heritage and cultural features contribute to Wingecarribee Shire's unique and distinct character.



4. Environment

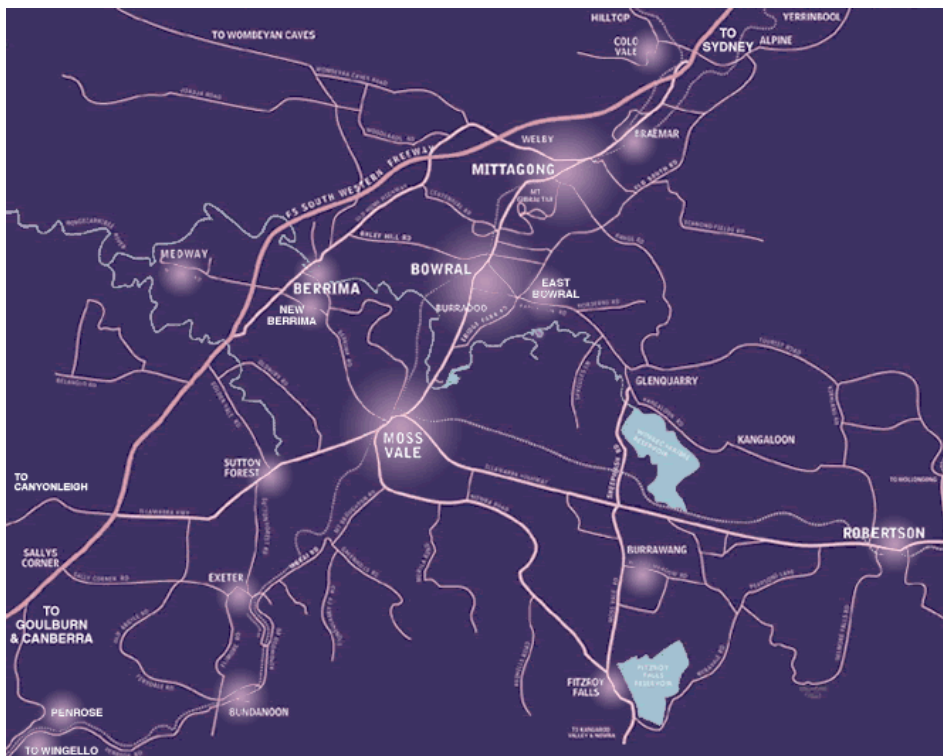
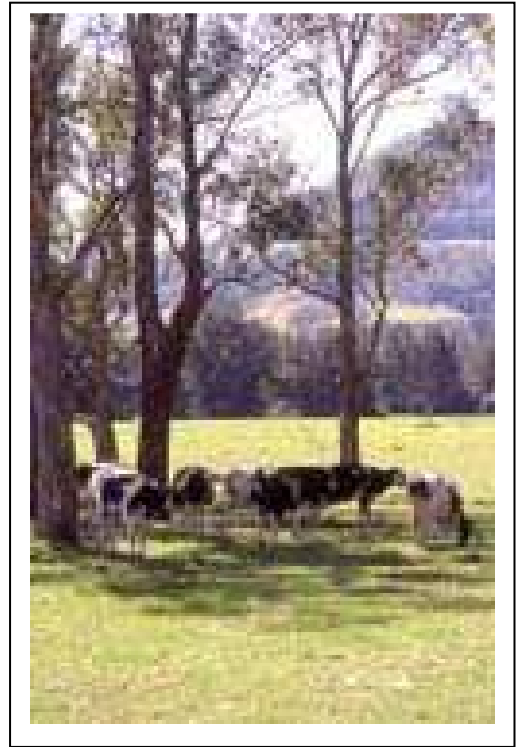
The Shire is rich in biodiversity with large areas of high conservation value including part of the World Heritage Greater Blue Mountains area and two declared wilderness areas. Environmental features include cold climatic conditions, rugged topography and significant areas of state forest, national park and other protected lands that form part of the Sydney water catchment area.

Eastern parts of the Shire are bounded by the Illawarra escarpment and Morton National Park. The north abuts Nepean and Avon dam catchments and is rugged eucalypt bushland. In the west, the Wollondilly and Wingecarribee rivers flow through deep sandstone valleys which form part of the Warragamba dam catchment. Southern reaches of the Shire are bounded by Uringall Creek and comprise sandstone plateau dissected by deep gorges.

5. Settlement

Wingecarribee Shire is predominantly rural in character with agricultural lands separating towns and villages characterised by unique landscape and aesthetic appeal. Development pressures are significant and include subdivision for residential and lifestyle purposes, for infrastructure, industry and agriculture.

The Southern Highlands forms part of Gundungurra tribal lands and preservation of Aboriginal heritage is significant. European settlement dates back to the early 1800s with first contact between Aboriginal people and Europeans occurring in 1798. Settlement followed in 1821 at Bong Bong.



Urban development is concentrated in the Shire's three main towns of Mittagong, Bowral and Moss Vale which lie in close proximity along the main north-south road network. Bundanoon, a smaller town is located 20km further south. Villages include Balmoral, Hill Top, Colo Vale and Yerrinbool in the northern reaches; Berrima and New Berrima west of Moss Vale; Exeter, Penrose and Wingello in the south, Burrawang and Robertson to the east.

6. Industry

Since the mid 1980's, population growth, urbanisation and other changes have led to declining numbers of persons working in primary industry and to the development of secondary and tertiary industries. By 2006, only 5% of the Shire's labour force was engaged in agriculture, forestry, fishing or mining.



Most common industries of employment are now retail and wholesale trade, manufacturing, health and community services, construction, education and training, recreation and hospitality. Industrial estates are located north of Mittagong and north-west of Moss Vale where Council is encouraging further industrial development within an Enterprise Zone.

Due to the Shire's numerous attractions, tourism will continue to offer prospects for economic growth. Level of tourist expenditure is one of the highest of any non-coastal local government area in NSW.¹ Viticulture is a growing primary industry with close links to tourism.

Anticipated population growth of some 44,200 new residents within the Sydney to Canberra corridor over the next 25 years to 2031² will present significant opportunities for future economic development and employment creation.

7. Transportation

Shire towns are linked by bus and rail services. Cityrail links Yerrinbool, Mittagong, Bowral, Burradoo, Moss Vale and Bundanoon offering access to Sydney. CountryLink also operates daily to and from Sydney, Canberra and Melbourne. Buses operate to and from Moss Vale to Nowra and Wollongong and link Colo Vale and Hill Top to Cityrail services at Picton. A taxi service operates ranks in all towns and a shuttle bus travels daily to Sydney Airport & CBD.

While regular bus services operate between the Shire's three main towns, Bundanoon and village communities are less well serviced. Due to low population densities inhibiting service viability, a majority of village communities have only the one school bus service and no servicing during weekends or school vacations.

Community transport provided by volunteers is available for frail aged persons and people with a disability who are transport disadvantaged.

¹ Wingecarribee Shire Population Modelling Study 2004 Census Applications

² Draft Sydney – Canberra Corridor Regional Strategy 2007 – 2031 NSW Depart of Planning November 2007

8. Population

At Census 2006, Wingecarribee Shire had a population of 42,272 residents. Of these persons, 90% were Australian citizens, 15% were born overseas and 1.3% identified as of Aboriginal or Torres Islander descent.

Table 1. Wingecarribee Population 2006	Persons	% Persons	% NSW	% Australian
Persons	42,272	-	-	-
Males	20,298	48%	49%	49%
Females	21,974	52%	51%	51%
Aboriginal & Torres St Islander persons	529	1.3%	2.1%	2.3%
Australian citizenship	37,861	90%	86%	86%
Persons born overseas	6,187	15%	24%	22%

Source: ABS Census 2006 Quick Stats

By way of population, Wingecarribee Shire represents 11% of the Illawarra regional population and 15% of that for the Outer South Western Sydney (OSWS) planning region. The following table provides population data on local government areas across both regions.

Table 2. Population Illawarra Region 2006	Persons	% Persons	OSW Sydney Region 2006	Persons	% Persons
Wingecarribee	42,272	11%	Wingecarribee	42,272	15%
Wollongong	184,213	47%	Wollondilly	40,344	15%
Shellharbour	60,336	15%	Camden	49,646	18%
Kiama	18,988	5%	Campbelltown	143,077	52%
Shoalhaven	88,405	22%		-	-
Illawarra Region	394,213	-	OSWS Region	275,338	-

Source: ABS Census 2006 Basic Community Profiles

9. Population Growth

Between 2001 and 2006, the Shire's population increased by 4% and in absolute terms by 1,432 persons. Contrary to projections, population growth slowed over this period to an average of 0.7% per annum, significantly down from 2% per annum over 1996 to 2001. For NSW, growth also slowed from an average rate of 1% to 0.7% p.a. over 2001 to 2006.

Table 3. Shire Population Comparisons	1991	1996	2001	2006
Total Persons	33,240	36,777	40,840	42,272

Table 4. Shire Average Annual Growth Comparisons	Increase in Persons	Shire % Change pa	NSW % Change pa	Nation % Change pa
1991-1996	3,537	2.1%	1.0%	1.2%
1996-2001	4,063	2.2%	1.1%	1.2%
2001-2006	1,432	0.7%	0.7%	1.1%

Source: ABS Census 2006 and 2001

10. Population Change

The Shire's population growth of 1,432 persons over 2001 to 2006 represented a net gain i.e. natural increase (births minus deaths) plus net migration (in migration minus out migration).

Between 2001 to 2006, the Shire received 8,643 new residents; 82% having moved to the Southern Highlands from within NSW, 8% from elsewhere in Australia and 8% from overseas. A major factor contributing to slowed population growth over this period would therefore be out migration of existing residents.

Table 5. Place of Usual Residence 5 Years Ago		Place of Usual Residence 1 Year Ago	
Excludes persons aged 5 yrs or less	Persons	Excludes persons aged 1 yr or less	Persons
Same usual address	21,447	Same usual address	34,119
Different address:		Different address:	
Same Statistical Local Area	7,349	Same Statistical Local Area	3,056
Elsewhere in NSW	7,075	Elsewhere in NSW	1,863
Elsewhere in Australia	698	Elsewhere in Australia	255
Overseas	728	Overseas	349
Not stated(a)	142	Not stated(a)	53
Not stated(b)	2,303	Not stated(b)	2,101
Total	39,742	Total	41,796

Source: ABS 2006 Basic Community Profile

Between 1996 and 2001, the Shire experienced net migration of 3,248 persons with 47% attributed to the in-migration of persons aged 55 years and over, which is expected to continue. Outward movement of young people is typical of rural localities and attributed to limited education and employment opportunities.³ Consequently, Wingecarribee Shire is characterised by 'premature ageing' occurring faster than for NSW and reflected in the Shire's increasing median age.⁴

Table 6. Median Age Census Comparisons	Shire 1996	Shire 2001	Shire 2006	Illawarra 2006	OSWS 2006	NSW 2006	Nation 2006
Median age of persons	35	38	42	39	32	37	37

Source: ABS Census 2006 Quick Stats

In 2004, the Shire was the State's 50th oldest LGA with an elderly to child ratio⁵ of 0.7 representing seven persons aged 65 years and over for every ten children (0 to 14 years). By 2022, this ratio is anticipated to revert to about 14 elderly persons for every 10 children.

The change to more elderly Shire residents than children is expected to appear by 2011, compared to 2019 for the Sydney Greater Metropolitan Region (GMR) and 2015 for NSW.

³ Wingecarribee Shire Population Modelling Study 2004 Census Applications

⁴ Local Government Response to Ageing and Place 2004, NSW Local Government Assn

11. Population Distribution

The Shire's urban centre comprises three towns; Mittagong, Bowral and Moss Vale situated in close proximity along the main north - south road network and railway corridor. Persons living in these towns represent 61% of the Shire's total population.

The main town centre is Bowral which with adjacent suburbs of Burradoo and East Bowral extends over 30 square kilometres and is home to 11,500 residents, representing 27% of the Shire population in 2006.

Table 7. Population Shire Towns 2006	ABS District	Local	Square Kms	Households	Persons
Mittagong inc Welby, Braemar & Willow Vale	UCL 153600	Town	23.4	2,799	7,461
Aylmerton Balaclava	CD 1201004	Suburb	13.9	78	244
Bowral	SSC 16441	Town	13.3	2,852	6,970
East Bowral	CD 1201112	Suburb	0.9	416	1,229
East Bowral	CD 1201014	Suburb	2.1	367	1,228
Burradoo	SSC 16575	Town	13.9	735	2,073
Moss Vale	UCL 155200	Town	10.4	2,503	6,723
Bundanoon	UCL114800	Town	7.5	817	2,035
Town Dwellers			85.4	10,567	27,963

Source: ABS 2006 Basic Community Profile

Mittagong lies adjacent to Bowral to the north of Mt Gibraltar. Surrounding suburbs include Welby, west of town centre and then Willow Vale, Braemar and Balaclava stretching north along the Old Hume Highway. Inclusive of suburbs, Mittagong covers 38 square kilometres with a population of 7,705 persons, contributing to 18% of the Shire population in 2006.

Moss Vale lies immediately to the south of Bowral and is separated from the urban fringe of Burradoo by a narrow belt of pastoral land. This town covers 10 square kilometres. In 2006, the population was 6,723 residents, comprising 16% of the Shire population.

Bundanoon which lies 20 kilometres south of Moss Vale is a considerably smaller town of 7.5 square kilometres and 2,035 residents, representing 5% of the Shire population in 2006.

Adjacent maps show the location of towns, villages and rural areas identified as Census collector districts. Shire villages include Balmoral, Hill Top, Colo Vale and Yerrinbool in the northern reaches; Berrima and New Berrima west of Moss Vale; Exeter, Penrose and Wingello in the south, Burrawang and Robertson to the east.

ABS Census districts do not singularly identify the villages of Balmoral, Sutton Forest or Penrose. Nor do titles necessarily reflect local place names.

The northern villages of Yerrinbool, Colo Vale and Hill Top are situated in close proximity. All have substantive populations and collectively over 4,000 residents, representing 10% of the Shire population in 2006. Robertson is also a large village of 1,205 residents, located about 26 kms east of Moss Vale on the Illawarra Highway which links the Shire to Wollongong, Shellharbour and Kiama population centres. This community represented 3% of the Shire population in 2006. The small village of Burrawang is also situated just off this main road.

Table 8. Population Shire Villages 2006	ABS District	Local	Square Kms	Households	Persons
Yerrinbool	UCL 187800	North	3	355	1,032
Hill Top	UCL 139400	North	2.2	591	1,803
Colo Vale	UCL 120400	North	3.5	408	1,214
Berrima	CD 1200602	West	0.7	94	275
New Berrima	CD 1200601	West	3.3	234	594
Exeter	CD 1200813	South	2	147	398
Wingello	CD 1200814	South	2.9	120	308
Burrawang	CD 1200806	East	1.1	70	76
Robertson	UCL 167400	East	4.1	420	1,205
Village Dwellers			22.8	2,439	6,905

Source: ABS 2006 Basic Community Profile

Berrima and New Berrima are adjacent villages located 8 kilometres west of Moss Vale, representing 2% of the Shire population in 2006. Exeter and Wingello are also small communities situated to the south of Moss Vale in proximity to Bundanoon. Rural areas listed in Table 9 collectively represent 7,320 persons and 17% of the Shire population in 2006

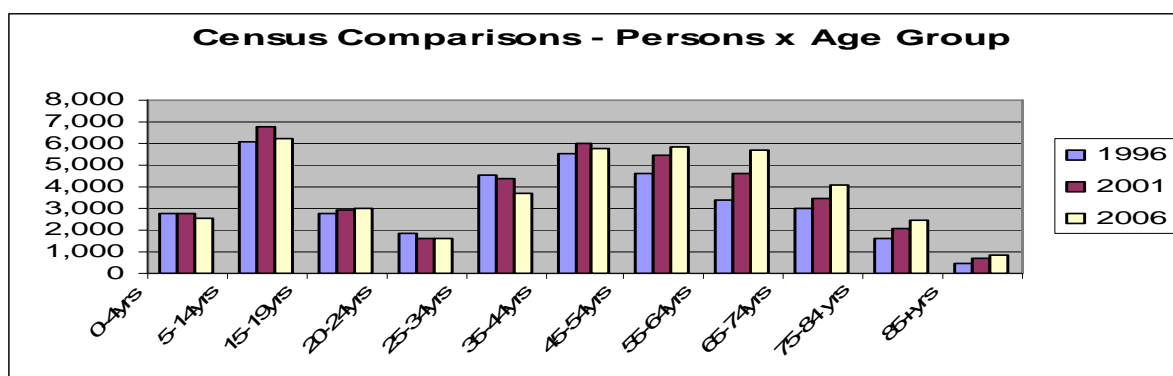
Table 9. Population Shire Rural Districts 2006	ABS District	Local	Square Kms	Households	Persons
Hill Top Rural North	CD 1200606	North	192.6	268	786
Colo Vale Rural North	CD 1200615	North	51.2	118	370
Colo Vale Rural South	CD 1200608	North	17.9	71	231
Bowral Rural North	CD 1201006	East	387.9	107	425
Moss Vale Rural East	CD 1200804	East	67.4	120	362
Kangaloon	CD 1201008	East	78.5	125	337
Robertson Rural North	CD 1201013	East	29.7	146	363
Robertson Rural South	CD 1200809	East	86.6	123	334
Meryla	CD 1200817	East	132.8	116	301
Wildes Meadow	CD 1200805	East	40.4	148	388
High Range	CD 1200604	West	457.1	98	301
Bowral Rural West	CD 1200609	West	43.6	113	302
Moss Vale Rural West	CD 1200705	West	45.7	94	255
Joadja	CD 1200603	West	188	177	498
Berrima Rural West	CD 1200703	West	270.9	146	427
Canyonleigh	CD 1200716	West	129.8	99	293
Sutton Forest	CD 1200704	South	49.5	98	253
Bundanoon Rural West	CD 1200810	South	115.8	198	557
Penrose	CD 1200811	South	84.4	77	226
Weraï	CD 1200803	South	110.5	120	311
Rural Dwellers			2,580.3	2,562	7,320

Source: ABS 2006 Basic Community Profile

12. Population Age Profile

Census comparisons indicate that over time, the Wingecarribee Shire population is experiencing declining numbers of infants (0 to 4 yrs) and school age children (5 to 14 yrs). This corresponds with declining numbers of adults aged between 35 to 44 years, typically representing families with dependent children.

Increases in numbers of persons across all age cohorts from 55 years reflect in-migration of older persons and the impact of population ageing.



Nevertheless, Wingecarribee Shire still has a relatively youthful population. In 2006, 32% of residents were younger than 24 years of age. This compares similarly to the proportion of residents aged 55 years and over, also 32% at this time.

Table 10. Shire Age Profile Census Comparisons	Persons 1996	% Persons	Persons 2001	% Persons	Persons 2006	% Persons
0-4yrs	2,799	8%	2,761	7%	2,531	6%
5-14yrs	6,113	17%	6,733	16%	6,242	15%
15-19yrs	2,797	8%	2,950	7%	2,975	7%
20-24yrs	1,823	5%	1,628	4%	1,660	4%
25-34yrs	4,566	12%	4,409	11%	3,673	9%
35-44yrs	5,504	15%	6,028	15%	5,783	14%
45-54yrs	4,647	13%	5,472	13%	5,928	14%
55-64yrs	3,418	9%	4,615	11%	5,892	14%
65-74yrs	3,014	8%	3,461	8%	4,215	10%
75-84 yrs	1,640	4%	2,103	5%	2,529	6%
85+yrs	456	1%	680	2%	845	2%
Total Persons	36,777	-	40,840	-	42,272	-

Source: ABS Census Time Series Profile - Place of Enumeration

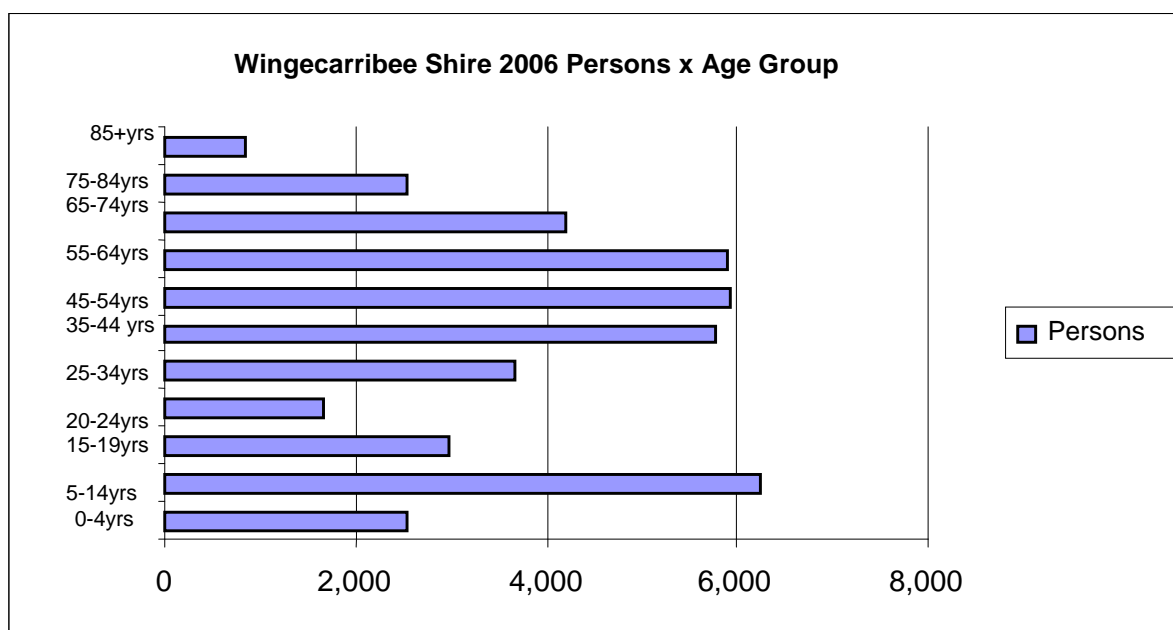
In 2006, children aged between 0 to 14 years totalled 8,773 persons, representing 21% of the Shire population being slightly higher proportionately than for Illawarra region and NSW.

Table 11. Age Profile 2006 Region & State Comparisons	Shire Persons	% Shire Persons	% Illawarra Persons	% NSW Persons	% Nation Persons
0-4 years	2,531	6%	6%	6%	6%
5-14 years	6,240	15%	14%	13%	14%
15-24 years	4,637	11%	13%	13%	14%
25-54 years	15,384	36%	39%	42%	42%
55-64 years	5,893	14%	12%	11%	11%
65 years and over	7,590	18%	17%	14%	13%

Source: ABS Census 2006 Quick Stats

In 2006, the number of residents aged 65 years and over totalled 7,589 persons, having increased since 2001 by 1,345 persons and proportionately from 15% to 18% of the total Shire population and comparing now to 14% for NSW and 13% for Australia. Of these residents, 44% are 75 years of age or older. Numbers of women generally exceed the number of men in all age groups from 55 years and over.

By 2022, persons aged 65 years and over are expected to represent 25% of the Shire population. The proportion of persons aged 85 years or older will almost double to 3.2%.⁵



Population ageing is a national trend emphasising increasing demand for services appropriate to the needs of older persons. Attention should equally be given to promoting families, supporting parents in child rearing and measures to retain a diverse and inclusive community. Factors that enable older people to retain independence include being able to remain in their own home or community, feeling safe and avoiding loneliness, leisure and recreation, access to transportation and communications, advice on health and well being, access to community services and opportunities for continued learning and participation.

⁵ Local Government Response to Ageing and Place 2004, NSW Local Government Assn

13. Aboriginal and Torres Strait Islander Persons

In 2006, 525 residents identified as being from Aboriginal or Torres Strait Islander descent, representing 1.3% of the Shire population compared to 2% for NSW and Australia.

Table 12. Shire Aboriginal & Torres Strait Islander Persons	1996	2001	2006
Aboriginal	323	446	471
Torres Strait Islander	27	21	25
Aboriginal and Torres St Is.	12	30	29
Total A&TSI persons	362	497	525

Source: ABS Census 2006 Time Series Profile - Place of Enumeration

Following tables provide data on Aboriginal and Torres Strait Islander populations for neighbouring LGAs and for Illawarra and Outer South Western Sydney (OSWS) regions.

Table 13. Aboriginal and Torres Strait Islander Persons LGA and Regional Comparisons 2006					
	Persons	% Population		Persons	% Population
Wollongong	3,120	1.7%	Wollondilly	761	1.9%
Shellharbour	1,402	2.3%	Camden	649	1.3%
Kiama	219	1.1%	Campbelltown	3,831	2.7%
Shoalhaven	3,311	3.7%	OSWS	5,243	2.2%
Illawarra region	8,580	2.2%			

Source: ABS 2006 Basic Community Profile

Wingecarribee Shire's Aboriginal community is characteristically young with 38% of persons being children aged between 0 to 14 years. A further 17% are young people aged between 15 to 24 years. Persons aged 50 years or older make up only 14% of this population group.

In 2004, the Area Health Service reported that fewer than 2% of Aboriginal men and 3% of Aboriginal women in South West Sydney are aged 65 years or over compared with 8% of this area's total male population and 11% of the female population.⁶

Table 14. Shire Aboriginal & Torres St Is. Persons Age Profile 2006	Persons	% Persons
0-4 years	59	11%
5-9 years	54	10%
10-14 years	90	17%
15-19 years	59	11%
20-24 years	30	6%
25-29 years	28	5%
30-34 years	43	8%
35-39 years	37	7%
40-44 years	19	4%
45-49 years	36	7%
50-54 years	27	5%
55-59 years	11	2%
60-64 years	19	4%
65 years and over	16	3%
Total	528	-

Source: ABS Census 2006 Indigenous Profile

⁶ SWSAHS Strategic Directions Statement July 2004 - June 2007

14. People with a Disability

Disability can result from accident, trauma, genetics or disease. Impairment can be permanent or temporary and may be physical, intellectual, psychiatric, sensory or neurological. In 2006, the ABS collected data to measure the number of people in the Australian population with a profound or severe restriction due to disability, old age or a long term health condition lasting six or more months.

People are described as having a profound restriction if they are unable or always need help to perform a core activity of daily living in self care, mobility and/or communication. Those who sometimes need help have a severe restriction. Moderate restriction describes persons not needing help but who have difficulty with a core task. People who do not require help but who use aids and equipment have a mild restriction or disability.⁷

In the 2006 Census, 1,766 Shire residents indicated that they had either a profound or severe restriction representing 4% of the Shire population. This offers insight as to level of demand for community care and disability support services within the Shire community.

Table 15. Shire Need for Assistance 2006 People with a Profound or Severe Restriction	Persons	% Persons	% Illawarra	% NSW	% Nation
Persons needing assistance	1,766	4%	5%	4%	4%
No need for assistance	38,425	91%	-	-	-
Not stated	2,082	5%	-	-	-
Shire population	42,273	-	-	-	-

Source: ABS Census 2006 Basic Community Profile

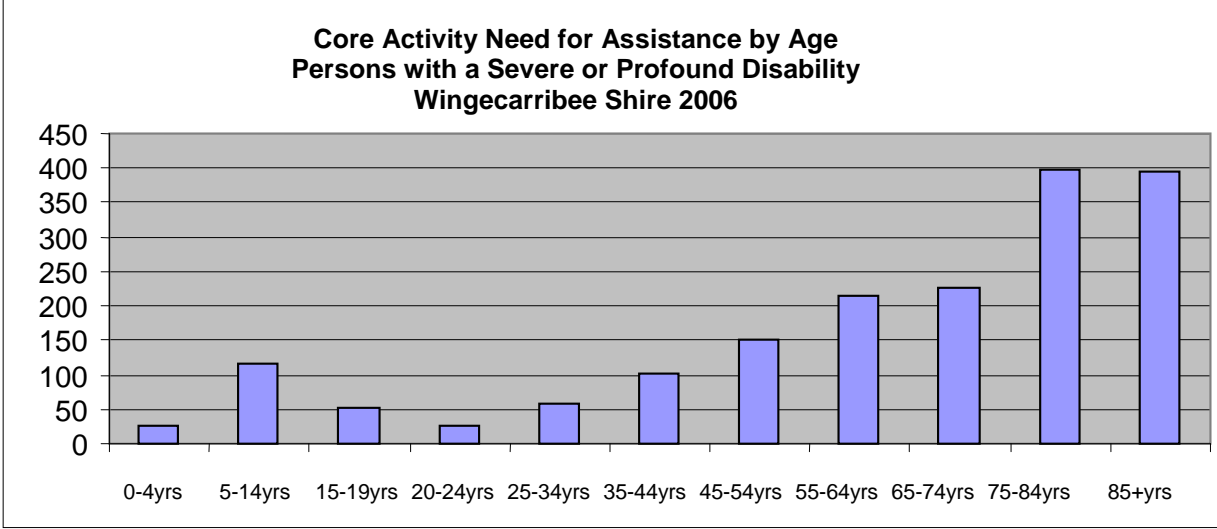
Table 16. Shire Age Profile 2006 People with a Profound or Severe Restriction		
Age Group	Shire Persons	% Persons
0-4 years	26	1%
5-14 years	117	7%
15-19 years	53	3%
20-24 years	25	1%
25-34 years	58	3%
35-44 years	103	6%
45-54 years	151	9%
55-64 years	215	12%
65-74 years	227	13%
75-84 years	397	22%
85 years and over	394	22%
Total	1,766	-

Source: ABS Census 2006 Basic Community Profile



⁷ Australia's Welfare 2003, Australian Institute of Health and Welfare, Canberra

As incidence of disability and chronic illness increases with ageing, the majority of residents with a profound or severe disability (69%) are older than 65 years of age. While main conditions for older people are typically physical or sensory, the majority of young people with a disability will have a physical and/or intellectual impairment.⁸



In 2006 the ABS also collected data on people providing assistance to persons with a disability. While “carer” refers to anyone caring in a paid or voluntary capacity for another, informal care describes unpaid assistance given by relatives, families, friends or neighbours.

Table 17. Shire Unpaid Assistance to a Person with a Disability 2006
Persons aged 15 years and over

Age Groups	All persons 15+ years	Persons Assisting	% Persons	% NSW
15-19 years	2,974	119	3%	3%
20-24 years	1,660	96	3%	4%
25-34 years	3,673	314	8%	12%
35-44 years	5,785	670	18%	19%
45-54 years	5,929	870	23%	24%
55-64 years	5,893	961	25%	21%
65-74 years	4,214	478	13%	10%
75-84 years	2,528	248	7%	5%
85 years & over	846	47	1%	1%
Total	33,502	3,803	-	-

Source: ABS Census 2006 Basic Community Profile

Community services are typically used to supplement care given by family and friends.⁹ At Census 2006, a total of 3,803 residents were providing unpaid assistance to a person with a disability, representing 11% of all Shire residents aged 15 years and over. Caring for a disabled person may encompass personal care, mobility, communication, shopping, meals and domestic chores, transportation, supervision, financial assistance and advocacy.

⁸ Australia's Welfare 2003, Australian Institute of Health and Welfare, Canberra

15. Persons Born Overseas

Between 2001 and 2006 the number of Shire residents who were born overseas remained proportionately stable but increased in absolute terms by 233 persons to 6,185 residents, representing 15% of the Shire population. This proportion is low compared to Illawarra region, NSW and the nation.

While countries of origin are diverse, common countries of residents who were born overseas are: England (6%), New Zealand (1%), Scotland (0.8%), Germany (0.6%) and the Netherlands (0.5%).



Table 18. Shire Persons Born Overseas 2006	Persons	% Persons	% Illawarra	% NSW	% Nation
Persons born overseas	6,185	15%	18%	24%	22%

Source: ABS Census 2006 Quick Stats

Table 19. Shire Most Common Countries of Birth 2006	2001	% Persons	2006	% Persons
Australia	32,547	80%	33,537	79%
England	2,341	6%	2,466	6%
New Zealand	545	1%	565	1%
Scotland	343	0.8%	346	0.8%
Germany	264	0.6%	260	0.6%
Netherlands	213	0.5%	212	0.5%

Source: ABS Census 2006 and 2001 Quick Stats

Residents born overseas who speak a language other than English at home totalled 1,796 persons in 2006, representing 29% of this population group and 4% of the Shire population.

Following tables provide data on total persons born overseas for neighbouring local government areas and for Illawarra and Outer South Western Sydney (OSWS) regions.

Table 20. Persons Born Overseas LGA and Regional Comparisons 2006						
	Persons	% All Persons			Persons	% All Persons
Wollongong	39,672	22%		Wollondilly	5,027	12%
Shellharbour	11,025	18%		Camden	7,678	15%
Kiama	2,409	13%		Campbelltown	37,491	26%
Shoalhaven	11,161	13%		OSWS	50,194	22%
Illawarra region	70,449	18%				

Source: ABS Census 2006 Quick Stats

⁹ DADHC Future Directions 2004 NSW Department of Ageing, Disability and Home Care, Sydney

In absolute terms, numbers of persons from similar ethnic backgrounds living in the Wingecarribee Shire are small. Due to this ethnic diversity, languages spoken at home other than English are similarly varied. Most common languages other than English remain proportionately similar to 2001 and are: Italian (0.6%), German (0.4%), Greek (0.3%), Cantonese (0.3%) and Mandarin (0.2%).

Table 21. Shire Countries of Birth 2006 Persons Language Spoken at Home 2006 Persons

Country of Birth	Persons	Language Spoken at Home	Persons
Australia	33,536	Speaks English only	38,453
Bosnia and Herzegovina	3	Speaks Aboriginal language	8
Canada	82	Speaks other language:	
China	143	Arabic	39
Croatia	38	Cantonese	139
Egypt	30	Mandarin	93
Fiji	28	Other Chinese language	14
Former Yugoslav Republic of Macedonia	15	Croatian	40
Germany	260	Dutch	89
Greece	54	Filipino	11
Hong Kong	73	French	75
India	72	German	171
Indonesia	35	Greek	143
Iraq	3	Hindi	19
Ireland	80	Hungarian	42
Italy	156	Indonesian	25
Japan	32	Persian	10
South Korea	17	Italian	246
Lebanon	16	Japanese	40
Malaysia	41	Khmer	4
Malta	60	Korean	16
Netherlands	210	Macedonian	31
New Zealand	564	Maltese	13
Papua New Guinea	28	Polish	51
Philippines	49	Portuguese	30
Poland	61	Russian	13
Singapore	29	Samoan	0
South Africa	130	Serbian	39
South Eastern Europe	33	Sinhalese	0
Sri Lanka	19	Spanish	80
Thailand	27	Tagalog	8
Turkey	5	Tamil	0
United Kingdom	2,930	Turkish	11
United States of America	144	Vietnamese	32
Viet Nam	29	Other language	272
Other country of birth	692	<i>Total</i>	<i>1,796</i>
<i>Total</i>	<i>6,188</i>		
Not stated	2,549	Not stated	2,015

Source: ABS Census 2006 Basic Community Profile

16. Religious Affiliation

In 2006, most common religions characterising Shire residents were; Anglican (31%), Catholic (24%), Uniting Church (5%), Presbyterian and Reformed (4%). From 2001 to 2006, the proportion of persons with no religious affiliation increased from 13% to 16%.

Table 22. Shire 2006 Most Common Religions	Shire 2001	% All Persons	Shire 2006	% All Persons	% NSW	% Nation
Anglican	13,163	32%	13,235	31%	22%	19%
Catholic	9,906	24%	10,162	24%	28%	26%
No Religion	5,124	13%	6,684	16%	14%	19%
Uniting Church	2,550	6%	2,239	5%	5%	6%
Presbyterian and Reformed	1,685	4%	1,624	4%	3%	3%

Source: ABS Census 2006 and 2001 Quick Stats

17. Marital Status

In 2006, 56% of Shire residents aged 15 years and over were married, 26% had never married, 7% were widowed and 12% were separated or divorced.

Table 23. Shire 2006 Marital Status Persons aged 15 years and over	Shire 2001	% All Persons	Shire 2006	% All Persons	% NSW	% Nation
Married	17,532	56%	18,582	56%	50%	50%
Never married	8,011	26%	8,666	26%	33%	33%
Separated or divorced	3,545	11%	4,051	12%	11%	11%
Widowed	2,089	7%	2,202	7%	6%	6%

Source: ABS Census 2006 and 2001 Quick Stats

18. Households

In 2006, occupied private dwellings represented 16,218 households Shirewide. Population change over 2001 to 2006 has led to a decrease in family households from 72% to 70% of occupied dwellings and increasing lone person households, comprising 3,795 in 2006. This reflects predicted trends. From 2001 to 2006, persons living alone increased by 437 households to represent 23% of households Shirewide, comparing similarly with NSW.

Table 24. Shire Households 2006 Occupied private dwellings (OPD)	Shire 2001	% OPD	Shire 2006	% OPD
Family households	10,881	72%	11,417	70%
Lone person households	3,358	22%	3,795	23%
Group households	307	2%	352	2%
Total occupied private dwellings	15,121	-	16,218	-

Source: ABS Census 2006 and 2001 Quick Stats

A majority of lone person households represent older persons. As considerable growth in the Shire's older population can be expected with population ageing, lone person households will continue to increase. In 2001, 26% of residents aged 65 years and over lived alone.

19. Household Size

Declining average household size has characterised the Shire since 1996 due to increasing numbers of lone person households.¹⁰ The current average occupancy rate of 2.5 persons per household compares to 2.6 for NSW and the nation.

Table 25. Shire Households 2006 Region and State Comparisons Occupied private dwellings (OPD)	% Shire Households	% Illawarra Households	% NSW Households	% Nation Households
Family households	70%	70%	68%	67%
Lone person households	23%	24%	23%	23%
Group households	2%	3%	4%	4%
Average persons per household	2.5	2.5	2.6	2.6
Average persons per bedroom	1.1	1.1	1.1	1.1

Source: ABS Census 2006 and 2001 Quick Stats

20. Families and Children

In 2006, the Shire had 11,561 families, comprising 41% couple families with dependent and/or non dependent children, 43% couple only families and 14% one parent families. This compares to 10,990 families in 2001 comprising; 45% couples with children, 40% couples only and 14% lone parent families.

Table 26. Shire Families 2001 and 2006	Shire 2001	% All Families	Shire 2006	% All Families
Couple families with children	4,891	45%	4,789	41%
Couple families without children	4,408	40%	5,004	43%
One parent families	1,578	14%	1,664	14%
Other families	113	1%	104	0.9%
Total families	10,990	-	11,561	-

Source: ABS Census 2006 and 2001 Quick Stats

Projections based on trends up until 2001, anticipated increasing numbers of couple families with children, as well as couple only and lone person households.¹¹ However between 2001 and 2006 the number of couple families with children decreased in absolute terms by 102 and the number of couple only families increased significantly by 596 households. Lone parent families also increased in number by 86 but remained proportionately stable.

Table 27. Families 2006 Region and State Comparisons	Shire % Families	% Illawarra Families	% NSW Families	% Nation Families
Couple families with children	41%	43%	46%	45%
Couple families without children	43%	39%	36%	37%
One parent families	14%	16%	16%	16%
Other families	0.9%	1%	2%	2%

Source: ABS Census 2006 Quick Stats

¹⁰ Wingecarribee Shire Population Modelling Study 2004 Census Applications

¹¹ Wingecarribee Shire Population Modelling Study 2004 Census Applications

In 2006, a total of 5,183 families Shirewide were caring for dependent children either younger than 15 years of age or as students aged between 15 to 24 years. Some households also include non dependent children. Over one fifth (23%) of these families are headed by a lone parent. The majority (70%) are young families rearing only children younger than 15 years.

Table 28. Shire Couple Families with Dependent Children 2001 and 2006	Families 2001	%	Families 2006	%
Family with dependent children under 15 yrs only Count also includes non dependent children	3,099	74%	2,840	71%
Family with children < 15 yrs and dependent students Count also includes non dependent children	651	15%	641	16%
Family with dependent students only Count also includes non dependent children	454	11%	531	13%
Total	4,204	-	4,012	-

Source: ABS 2006 and 2001 Basic Community Profile

In 2006, lone parent families caring for dependent children numbered 1,171 households. Similarly, the majority (71%) were caring only for children younger than 15 years of age.

Table 29. Shire Lone Parent Families with Dependent Children 2001 and 2006	Families 2001	%	Families 2006	%
Family with dependent children under 15 yrs only Count also includes non dependent children	817	72%	835	71%
Family with children < 15 yrs and dependent students Count also includes non dependent children	134	12%	148	13%
Family with dependent students only Count also includes non dependent children	183	16%	188	16%
Total	1,134	-	1,171	-

Source: ABS 2006 and 2001 Basic Community Profile

For children and young people it is the quality of their relationships with family, significant adults and friends that facilitate development into adult competency. While family relationships are most important, many factors affect a family's capacity to raise children. Parent attributes, extended family support, socio-economic forces and the social environment all influence family capacity. Raising children is demanding and resource intensive and easier in communities where there are good connections between people, where people feel a sense of belonging and where community services are known and trusted. Families cannot cope in isolation and will manage better when they have informal support and help from services when needed. Supporting families in early child rearing or when first encountering problems strengthens coping capacities, improves child outcomes and saves the community money in reduced welfare dependency, delinquency and crime.¹²

¹² Report on an Inquiry into the Best Means of Assisting Children and Young People with No-one to Turn To.

21. Unpaid Child Care

Parents will often use a mixture of formal and informal child care options. Unpaid care provided by relatives, friends or others such as babysitters and nannies is referred to as informal care which is a common arrangement for infants and school aged children. In 2006, a total of 2,949 Shire residents were providing informal care for children other than their own, representing 8% of persons aged 15 years or over and comparing similarly as that for NSW.

Table 30. Shire Unpaid (Informal) Child Care 2006 Persons aged 15 years and over	Persons 2006	% Persons	% NSW
Caring for own child or children	6,818	20%	19%
Caring for other child or children	2,528	8%	7%
Caring for own and other child or children	421	1%	1%
Not providing child care	20,884	62%	63%
Not stated	2,850	9%	10%
Total	33,501	-	-

Source: ABS Census 2006 Basic Community Profile

Table 31. Shire Unpaid Child Care by Age 2006 Persons aged 15 years and over	Persons	% Persons
15-19 years	198	7%
20-24 years	113	4%
25-34 years	291	10%
35-44 years	376	13%
45-54 years	472	16%
55-64 years	837	28%
65-74 years	534	18%
75-84 years	123	4%
85 + years	5	0.1%
Total	2,949	-

Source: ABS Census 2006 Basic Community Profile

22. Median Incomes

Median household and family incomes for Wingecarribee Shire are slightly lower than that for the State and nation. The median income of Shire households of \$995 per week in 2006 compared to \$1,036 for NSW and \$1,027 for Australia. Median family income of \$1,148 per week is similarly lower compared to \$1,181 for families state-wide and \$1,171 nationally.

Table 32. Shire Median Incomes 2006 Region and State Comparisons Persons aged 15 years & over	Shire	Illawarra	NSW	Nation
Median individual income (\$/weekly)	462	388	461	466
Median household income (\$/weekly)	995	872	1,036	1,027
Median family income (\$/weekly)	1,148	1,083	1,181	1,171

Source: ABS Census 2006 Quick Stats

Moderate income households have income between 80% and 120% of the NSW median household income. Low income households have income of less than 80% of this median.¹³

¹³Information on the Wingecarribee Housing Market" NSW Department of Housing August 2007

The following tables compare median incomes of neighbouring local government areas across Illawarra region and Outer South Western (OSW) Sydney region in 2006.

	Wingecarribee	Wollongong	Shellharbour	Kiama	Shoalhaven
Median individual income (\$/weekly)	462	391	391	453	349
Median family income (\$/weekly)	1,148	1,149	1,107	1,218	849
Median household income (\$/weekly)	995	933	983	1,052	659

Source: ABS Census 2006 Basic Community Profile

	Wollondilly	Camden	Campbelltown
Median individual income (\$/weekly)	502	566	464
Median family income (\$/weekly)	1,321	1,465	1,156
Median household income (\$/weekly)	1,186	1,353	1,066

Source: ABS Census 2006 Basic Community Profile

23. Car Ownership and Commuting to Work

In 2006, 36% of Shire households owned the one motor vehicle and a further 54% owned two or more. Households without a motor vehicle totalled 912.

	Households 2006	% OPD	% OPD NSW	% OPD Nation
None	912	6%	12%	9%
One vehicle	5,667	36%	38%	36%
Two vehicles	5,988	38%	33%	35%
Three vehicles	1,724	11%	9%	10%
Four or more	760	5%	4%	5%
Not stated	514	3%	4%	4%
Total	15,565	99%	-	-

Source: ABS Census 2006 Basic Community Profile

Of persons commuting to work in 2006, 87% travelled by private vehicle compared to 6% who walked or cycled and 4% who used public transportation.

	Commuters 2006	% Commuters
Walking or cycling	804	6%
Public transport service	307	2%
Combination public and other transport	233	2%
Private motor vehicles inc passengers	12,669	87%
Other method of travel to work or not stated	479	3%
Total	14,492	-

Source: ABS Census 2006 Basic Community Profile

24. Access to Information Technology

By 2006, 63% of Shire households had Internet connection, a majority via broadband.

Table 37. Shire Internet Connection Occupied Private Dwellings (OPD) 2006	Households 2006	% OPD	% OPD NSW	% OPD Nation
No Internet connection	5,299	34%	35%	35%
Type of Connection				
Broadband connection	5,848	(59%)	(66%)	(64%)
Dial-up connection	3,933	(40%)	(33%)	(35%)
Other connection	62	(1%)	(1%)	(1%)
Total connection	9,843	63%	61%	61%
Not stated	423	3%	3%	3%
Total	15,565	-	-	-

Source: ABS Census 2006 Basic Community Profile

25. Housing Types – Occupied Private Dwellings (OPD)

In 2006, Wingecarribee Shire had 16,218 occupied private dwellings representing a proportionate increase of 7% since 2001. At Census 2006 unoccupied private dwellings comprised 15% of the Shire's total housing stock.

Housing types remain largely unchanged since 2001. Separate housing accounts for 90% of occupied private dwellings compared to 70% for NSW. While higher density housing such as villas, townhouses, flats and apartments increased by some 428 dwellings, stocks remain low at 9% of occupied private dwellings compared to 29% for NSW and 23% nationally.

Table 38. Shire Housing Types 2001 and 2006 (Occupied Private Dwellings)	Households 2001	%OPD	2006	%OPD	% OPD NSW	%OPD Nation
Housing type:						
Separate house	13,727	91%	14,510	90%	70%	75%
Semi, terrace, town house etc.	728	5%	1,045	6%	10%	9%
Flat, unit or apartment	386	3%	497	3%	19%	14%
Other dwellings	196	1%	163	1%	1%	2%
Not stated	84	0.6%	3	0.0%	0.1%	0.1%
Occupied private dwellings	-	99.4%	-	100%	-	-
Total occupied private dwellings	15,121	87%	16,218	85%	-	-
Unoccupied private dwellings	2,261	13%	2,773	15%	-	-
Total private dwellings	17,382	-	18,991	-	-	-

Source: ABS Census 2006 and 2001 Quick Stats

The NSW Department of Housing has advised on need for greater housing diversity and choice, particularly for one and two bedroom dwellings to meet the needs of residents throughout the life cycle, such as for young people leaving home and for older residents who can no longer maintain large houses and gardens. The Department predicts that by 2011, 82% of housing need in Wingecarribee Shire will be for one and two bedroom dwellings.¹⁴

¹⁴ Information on the Wingecarribee Housing Market" NSW Department of Housing August 2007

The Regional Strategy for the Sydney - Canberra Corridor prepared by NSW Planning, predicts that population growth of 15,500 persons over the next 25 years to 2031 will equate to demand for 8,700 new dwellings in the Wingecarribee Shire.¹⁵ Due to declining land availability in Bowral, housing demand is transferring to other town centres. Mittagong has no likely dwelling supply constraints until at least 2016. Moss Vale and Bundanoon are expected to have no such constraints during the next 15 years.¹⁶

26. Home Ownership

Since 2001, home ownership has remained relatively stable at 73% of occupied private dwellings in 2006, compared to 63% for NSW. With an increase in homes being purchased from 28% to 33%, the proportion of fully owned homes declined from 46% to 40%.

Table 39. Shire Housing Tenure 2001 and 2006 (Occupied Private Dwellings)	Households 2001	% OPD	Households 2006	% OPD	%OPD NSW 2006	%OPD Nation 2006
Fully owned	6,892	46%	6,423	40%	33%	33%
Being purchased	4,156	27%	5,363	33%	30%	32%
Rented includes rent-free	2,970	20%	3,411	21%	28%	27%
Other tenure type	405	3%	142	1%	1%	1%
Not stated	695	4%	879	5%	7%	7%
Occupied dwellings	15,118	-	16,218	-	-	-

Source: ABS Census 2006 and 2001 Quick Stats

27. Rental Housing

The proportion of housing available for private rental in the Wingecarribee Shire is low at 21% of occupied private dwellings in 2006, compared to 28% for NSW and 27% nationally.

Table 40. Shire Landlord Type 2001 and 2006 Occupied private dwellings rented	Households 2001	%OPD Rented	2006	%OPD Rented	%NSW 2006	%Nation 2006
Real estate agent	1,546	52%	1,945	57%	57%	51%
State housing authority	356	12%	401	12%	16%	15%
Other landlord type	1,028	35%	930	27%	25%	32%
Landlord type not stated	40	1%	135	4%	3%	3%
Occupied dwellings rented	2,970	-	3,411	-	-	-

Source: ABS Census 2006 and 2001 Quick Stats

Demand for rental housing is mainly generated by existing residents as people moving into the Shire are predominantly older persons who are owner-occupiers.¹⁷ For persons seeking rental accommodation, housing diversity and choice is limited contributing to affordability problems for lone person, couple and low income households.

¹⁵ Draft Sydney – Canberra Corridor Regional Strategy 2007 – 2031 NSW Dept of Planning November 2007

¹⁶ Wingecarribee Shire Population Modelling Study 2004 Census Applications

¹⁷ Wingecarribee Shire Population Modelling Study 2004 Census Applications

The Department of Housing advises that in 2001, 8.7% of dwellings in the private rental market had one bedroom, 27.8% had two bedrooms and 63.2% had three or more bedrooms.¹⁸ Declining availability of boarding house accommodation, traditionally a form of affordable housing for single persons is also an issue according to the Department due to numbers of lone person households in private rental, receiving Commonwealth Rent Assistance but experiencing housing stress. Currently two boarding houses licensed to accommodate people with a disability are still operating in the Shire.

28. Social Housing

Social housing is targeted to very low income households with special needs to age, disability or long term chronic illness and includes both public and community housing. In 2006, stocks equated to 618 dwellings Shirewide and comprised 388 public housing dwellings, two Aboriginal Housing Office properties and 228 community housing properties of which 133 were leased from the private market. Public housing is located in Mittagong, Welby, New Berrima, Bowral and Moss Vale and is typically congregated in neighbourhoods. Community housing properties are however dispersed within the community.

In 2006, public housing made up only 2% of all occupied housing Shirewide, which is well below the average of 5% for NSW and the Sydney Greater Metropolitan Region. Of this stock, 15% are one bedroom dwellings, 20% are two bedroom and 65% are of three or more bedrooms which does not well match increasing demand for social housing for aged and lone person households.¹⁹

29. Housing Cost

In 2006, the median weekly rent characterising Shire households was \$195 compared to \$210 for NSW and \$190 nationally. This means that 50% of Shire households living in rental housing were paying \$195 or more each week on housing costs. The median monthly loan repayment of \$1,517 was similar to NSW and compared to \$1,300 for the nation in 2006.

Table 41. Shire Housing Costs 2006 (OPD)	Households 2006	NSW 2006	Nation 2006
Median rent \$/weekly	195	210	190
Median housing loan repayment \$/monthly	1,517	1,517	1,300

Source: ABS Census 2006 Quick Stats

¹⁸ Information on the Wingecarribee Housing Market” NSW Department of Housing August 2007

¹⁹ Information on the Wingecarribee Housing Market” NSW Department of Housing August 2007

30. Housing Affordability

Affordable housing describes housing which is appropriate to the needs of a household by way of size and amenity and within household means by way of cost, commonly deemed to be within 30% of household income. Households spending more than 30% of total income on housing costs are described as experiencing housing stress.

National and local economic conditions, interest rates and demand from outside the Shire all influence housing prices and affordability. Analysis by the Department of Housing indicates that housing affordability in the Wingecarribee Shire is steadily declining. The Department reports that home purchase for lower income households is now less affordable than the average for Sydney, with the median sales price of housing having increased by around 70% to \$390,000 between March 2001 and December 2006. The proportion of low and moderate income households living in stress due to housing purchase was 60% compared to 61% for the Greater Metropolitan Region and 43% for the rest of NSW in 2006.²⁰

Nor is the private rental market catering for lower income households, particularly single and couple only households. In 2006, 53% of low and moderate income earners in private rental accommodation were paying more than 30% of household income on rent and experiencing housing stress. Of persons receiving Commonwealth Rent Assistance, two fifths are in housing stress. More than half are single persons and two fifths are couple households.²¹

31. Education

In 2006, a total of 7,247 students were attending a primary or secondary school in the Wingecarribee Shire. Primary school children attending government schools were proportionately higher at 63% compared to 44% of all high school students.

Table 42. Shire School Attendance 2006

Infants and Primary	Persons	% Persons	Secondary School	Persons	% Persons
Government	2,446	63%	Government	1,481	44%
Catholic	786	20%	Catholic	922	28%
Other Non Government	671	17%	Other Non Government	941	28%
Total	3,903	-	Total	3,344	-

Source: ABS 2006 Basic Community Profile

At Census 2006, 830 infants were participating in some form of preschool education. Preschool and child care providers in the Wingecarribee Shire include community based and privately managed centres all of which offer a preschool education program.

²⁰ Information on the Wingecarribee Housing Market²⁰ NSW Department of Housing August 2007

²¹ Information on the Wingecarribee Housing Market²¹ NSW Department of Housing August 2007

Table 43. Shire Tertiary Education 2006

Persons aged 15 years and over

Technical and Further Education	Persons	%
Full-time students:		
Aged 15-24 years	100	10%
Aged 25 years and over	52	5%
Part-time students:		
Aged 15-24 years	373	37%
Aged 25 years and over	467	46%
Status not stated	11	1%
Total	1,007	-

University or other Tertiary Institution	Persons	%
Full-time students:		
Aged 15-24 years	158	24%
Aged 25 years and over	98	15%
Part-time students:		
Aged 15-24 years	57	8%
Aged 25 years and over	347	52%
Status not stated	6	1%
Total	666	-

Source: ABS 2006 Basic Community Profile

In 2006, about 1,000 residents were participating in a technical and further education course locally, elsewhere or by the Internet. As TAFE colleges concentrate on vocational education, a majority of students attend part-time studies at 84% compared to 15% attending full time. As the Shire is characterised by out migration of young people aged between 19 to 24 years, fewer residents were participating in a university or other tertiary course, with mature age persons making up the majority of students at 67%.

In 2006, 14,550 Shire residents aged 15 years and over held a post schooling qualification.

Table 44. Shire Highest Year of School 2006	Persons	%
Persons aged 15 years & over		
Year 12 or equivalent	12,751	38%
Year 11 or equivalent	2,371	7%
Year 10 or equivalent	10,661	32%
Year 9 or equivalent	2,999	9%
Year 8 or below	1,718	5%
Did not go to school	86	0.2%
Not stated	2,914	9%
Total	33,501	-

Source: ABS 2006 Basic Community Profile

Table 45. Shire Non-school Qualifications 2006	Persons	%
Persons aged 15 years and over		
Postgraduate Degree	816	4%
Graduate Diploma/Certificate	564	3%
Bachelor Degree	3,550	19%
Advanced Diploma/Diploma	2,897	15%
Certificate Level	6,722	36%
Not adequately described	654	3%
Not stated	3,700	20%
Total	1,8903	-

Table 46. Field of Study 2006	Persons	%
Persons aged 15+ years with a qualification		
Agriculture, environmental and related studies	585	3
Natural and physical sciences	416	2
Information technology	190	1
Engineering and related technologies	3,075	16
Architecture and building	1,238	7
Health	1,912	10
Education	1,794	9
Management and commerce	2,923	15

Source: ABS 2006 Basic Community Profile

	Persons	%
Food, hospitality and personal services	933	5
Society and Culture	1,695	9
Creative Arts	609	3
Mixed Field Programmes	23	1
Inadequately described	214	1
Not stated	3,296	17
Total	18,903	

32. Employment

Most common industries of employment characterising the Shire's labour force remain similar to 2001 and are retailing (12%), health and community services (11%), manufacturing (11%) and construction (9%), education and training (9%) and hospitality services (8%).

Table 47. Shire Industry 2006					
Persons aged 15 years and over					
	Persons	%		Persons	%
Agriculture, forestry and fishing	711	4	Education and training	1,701	9
Mining	162	1	Arts and recreation services	225	1
Manufacturing	1,992	11	Health care/social assistance	1,969	11
Electricity, gas, water and waste	155	1	Rental, hiring and real estate	407	2
Construction	1,663	9	Admin and support services	443	2
Wholesale trade	651	4	Public administration and safety	754	4
Retail trade	2,180	12	Financial & insurance services	400	2
Information, media and telecommunications	238	1	Professional, scientific and technical services	1,071	6
Transport, postal, warehousing	880	5	Other services	688	4
Accommodation & food services	1,474	8	Not stated	420	2
			Total	18,184	-

Source: ABS Census 2006 Basic Community Profile

Main occupations are professionals (19%), technicians and trades workers (16%), managers (15%), clerical or administrative workers (13%) and labourers (11%).

Table 48. Shire Occupations 2006					
Persons aged 15 years and over					
	Persons	%		Persons	%
Managers	2,672	15	Professionals	3,505	19
Clerical and administrative workers	2,283	13	Sales workers	1,732	9
Technicians and trades workers	2,949	16	Labourers	1,940	11
Community and personal service workers	1,682	9	Machinery operators and drivers	1,134	6
Not stated	290	2	Total	1,187	-

Source: ABS Census 2006 Basic Community Profile

Since the mid 1980s, Wingecarribee Shire has experienced consistent decline in unemployment rates.²² From Census 2001, the overall unemployment rate continued to decline from 5% to 4% by Census 2006 when unemployed persons totalled 813 residents, 60% of whom were seeking full time work and the remainder part time work.

Table 49. Shire Labour Force 2001 and 2006					
Persons aged 15 years and over					
	Persons 2006	%	Persons 2001	%	
Employed full-time (35+hrs)	10,664	56	10,107	57	
Employed part-time	6,424	34	6,248	35	
Employed, away from work	647	3			
Hours worked not stated	451	2	519	3	
Unemployed	813	4	885	5	
Total labour force	18,999	-	17,759	-	

Source: ABS Census 2006 Basic Community Profile

²² Wingecarribee Shire Population Modelling Study 2004 Census Applications

During the week prior to Census 2006, 18,999 residents of working age were participating in the labour force, of whom 56% were working full-time and 34% part-time.

Table 50. Shire Labour Force 2006 Persons aged 15 years and over	Persons	%
Persons in labour force	18,999	57
Persons not in labour force	12,573	37
Labour force status not stated	1,928	6
Total working age persons	33,500	-
Unemployed looking for F/T work	489	60
Unemployed looking for P/T work	324	40
Total unemployed	813	-

Labour Force x Age	Persons	%
15-19 years	1,157	6
20-24 years	1,210	7
25-34 years	2,685	15
35-44 years	4,486	25
45-54 years	4,627	25
55-64 years	3,126	17
65-74 years	751	4
75-84 years	122	1
85 years and over	21	0.1
Total	18,185	-

Source: ABS Census 2006 Basic Community Profile

In 2006, 53% of the Shire's labour force was younger than 45 years of age. Persons younger than 25 years made up 13% of the labour force. Only five percent of working persons were past retirement age.

With population ageing, increasing numbers of Shire residents will reach retirement age. Consequently, labour force participation rates are expected to decrease leading to a lower proportion of people in the Shire's work force.²³

Unemployment rates for young persons are high compared to other age groups. In 2006, 11% of persons in the labour force aged between 15 to 19 years were unemployed. The unemployment rate for young adults aged between 20 to 24 years was similarly high at 9%.

Table 51. Shire Employment by Age 2006 Persons aged 15 years and over	Employed	Unemployed	% Unemployed
15-19 years	1,155	146	11%
20-24 years	1,212	120	9%
25-34 years	2,684	121	4%
35-44 years	4,488	159	3%
45-54 years	4,627	143	3%
55-64 years	3,125	105	3%
65+ years	895	19	1%
Total	18,186	813	4%

Source: ABS Census 2006 Basic Community Profile

In 2001, 76.5% of the Shire workforce worked locally, 3.2% travelled to other places within the region mostly to Wollongong and 20.3% travelled further mostly to places in Sydney.²⁴ In 2006, 8% of employed persons (1,538) indicated that they worked primarily at home.

²³ Wingecarribee Shire Population Modelling Study 2004 Census Applications

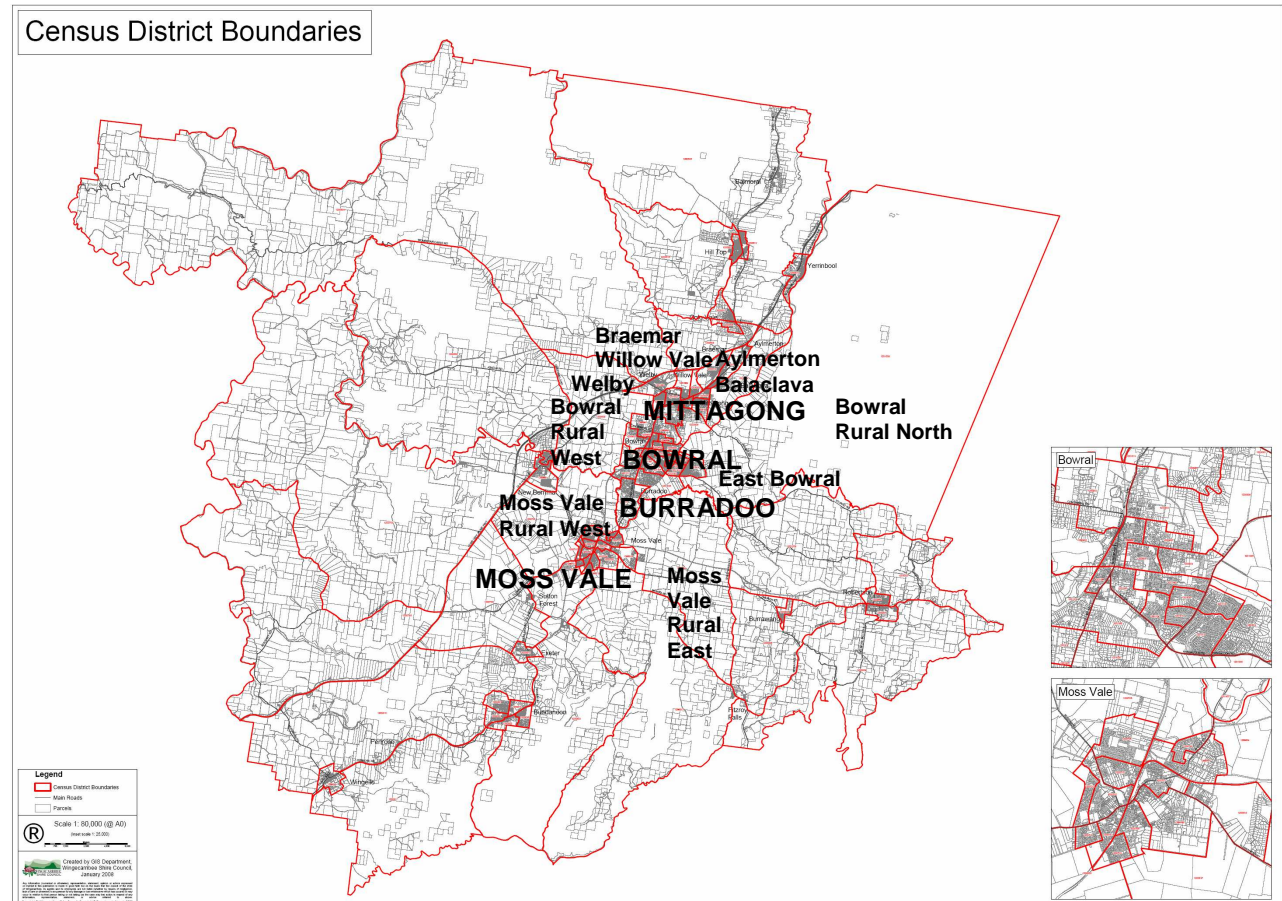
²⁴ Wingecarribee Shire Population Modelling Study 2004 Census Applications

33. Urban Centres and Surrounds Selected Data

Source: ABS 2006 Basic Community Profile

Features	Burradoo	Bowral	Bowral Rural West	East Bowral	East Bowral	Bowral Rural North
ABS District	SSC 16575	SSC 16441	CD 1200609	CD 1201112	CD 1201014	CD 1201006
Sq. kilometres	13.9	13.3	43.6	0.9	2.1	387.9
Description	Suburb	Town	Rural	Suburb	Suburb	Rural
Total persons	2,073	6,970	302	1,229	1,228	425
A&TSI persons	3	53	7	10	9	4
Overseas born	406	1,142	54	173	161	47
Language other than English	94	276	15	67	54	8

Age Groups	Burradoo	Bowral	Bowral Rural West	East Bowral	East Bowral	Bowral Rural North
0-4 years	62	338	12	86	105	17
5-14 years	255	893	27	252	249	57
15-19 years	111	390	24	82	84	30
20-24 years	39	288	6	34	44	9
25-34 years	59	505	16	120	85	12
35-44 years	212	779	39	208	221	42
45-54 years	291	938	43	156	177	70
55-64 years	372	991	76	129	128	68
65-74 years	322	878	39	110	103	32
75-84 years	232	687	8	46	31	49
85 + years	118	283	11	6	0	38
Median Age	55	48	50	37	37	51



<i>Households (OPD)</i>	<i>Burradoo</i>	<i>Bowral</i>	<i>Bowral Rural West</i>	<i>East Bowral</i>	<i>East Bowral</i>	<i>Bowral Rural North</i>
Separate house	731	2,189	113	416	364	107
Semi, row, terrace or town house	-	525	-	-	-	-
Flat, unit or apartment	-	134	-	-	3	-
Other dwelling	4	4	-	-	-	-
Total Dwellings	735	2,852	113	416	367	107
Average number of persons per bedroom	1.0	1.0	1.1	1.0	1.0	1.1
Average household Size	2.4	2.2	2.5	2.9	3.2	3.0

<i>Median Incomes</i>	<i>Burradoo</i>	<i>Bowral</i>	<i>Bowral Rural West</i>	<i>East Bowral</i>	<i>East Bowral</i>	<i>Bowral Rural North</i>
Median individual income (\$/weekly)	561	498	507	497	552	558
Median family income (\$/weekly)	1,583	1,174	1,233	1,223	1,528	1,674
Median household income (\$/weekly)	1,294	933	1,100	1,143	1,479	1,512
Median housing loan repayment (\$/monthly)	2,000	1,600	1,975	1,600	1,800	2,500
Median rent (\$/weekly)	260	220	250	290	320	200

<i>Motor Vehicles (OPD)</i>	<i>Burradoo</i>	<i>Bowral</i>	<i>Bowral Rural West</i>	<i>East Bowral</i>	<i>East Bowral</i>	<i>Bowral Rural North</i>
None	22	266	6	7	4	0
1 per dwelling	235	1,231	21	146	90	19
2 per dwelling	345	955	42	199	192	52
3 or more per dwelling	114	294	39	57	70	36

<i>Features</i>	<i>Mittagong</i>	<i>Aylmerton Balaclava</i>	<i>Moss Vale</i>	<i>Moss Vale Rural West</i>	<i>Moss Vale Rural East</i>
ABS District	UCL 153600	CD 1201004	UCL 155200	CD 1200705	CD 1200804
Sq. kilometres	23.4	13.9	10.4	45.7	67.4
Description	Town	Suburb	Town	Rural	Rural
Total persons	7,461	244	6,723	255	362
A&TSI persons	106	0	114	0	0
Overseas born	996	25	940	33	48
Language other than English	337	7	406	6	12

<i>Age Groups</i>	<i>Mittagong</i>	<i>Aylmerton Balaclava</i>	<i>Moss Vale</i>	<i>Moss Vale Rural West</i>	<i>Moss Vale Rural East</i>
0-4 years	438	12	412	16	21
5-14 years	1,128	41	988	31	82
15-19 years	589	24	585	18	24
20-24 years	330	11	321	6	14
25-34 years	701	14	635	15	26
35-44 years	933	30	941	31	32
45-54 years	1,066	45	881	45	71
55-64 years	987	36	819	39	46
65-74 years	738	21	587	44	23
75-84 years	433	10	432	7	20
85 + years	118	0	121	3	3
Median Age	40	44	39	47	38

<i>Households (OPD)</i>	<i>Mittagong</i>	<i>Aylmerton Balaclava</i>	<i>Moss Vale</i>	<i>Moss Vale Rural West</i>	<i>Moss Vale Rural East</i>
Separate house	2,418	73	2,160	94	120
Semi, row, terrace or town house	163	-	187	-	-
Flat, unit, apartment	183	5	111	-	-
Other dwelling	35	-	45	-	-
Total Dwellings	2,799	78	2,503	94	120
Average number persons/bedroom	1.1	1.1	1.1	1.1	1.0
Av. household Size	2.4	3.1	2.5	2.5	2.8

<i>Median Incomes</i>	<i>Mittagong</i>	<i>Aylmerton Balaclava</i>	<i>Moss Vale</i>	<i>Moss Vale Rural West</i>	<i>Moss Vale Rural East</i>
Median individual income (weekly)	427	478	408	520	522
Median family income (weekly)	1,101	1,349	1,067	1,162	1,237
Median household income (weekly)	865	1,250	836	977	1,066
Median housing loan repayment (monthly)	1,440	1,975	1,387	1,800	2,383
Median rent (weekly)	180	150	180	123	0

<i>Motor Vehicles</i>	<i>Mittagong</i>	<i>Aylmerton Balaclava</i>	<i>Moss Vale</i>	<i>Moss Vale Rural West</i>	<i>Moss Vale Rural East</i>
None	198	0	249	4	0
1 per dwelling	1,147	14	1,027	24	31
2 per dwelling	962	37	789	33	56
3 or more/dwelling	393	25	333	32	30

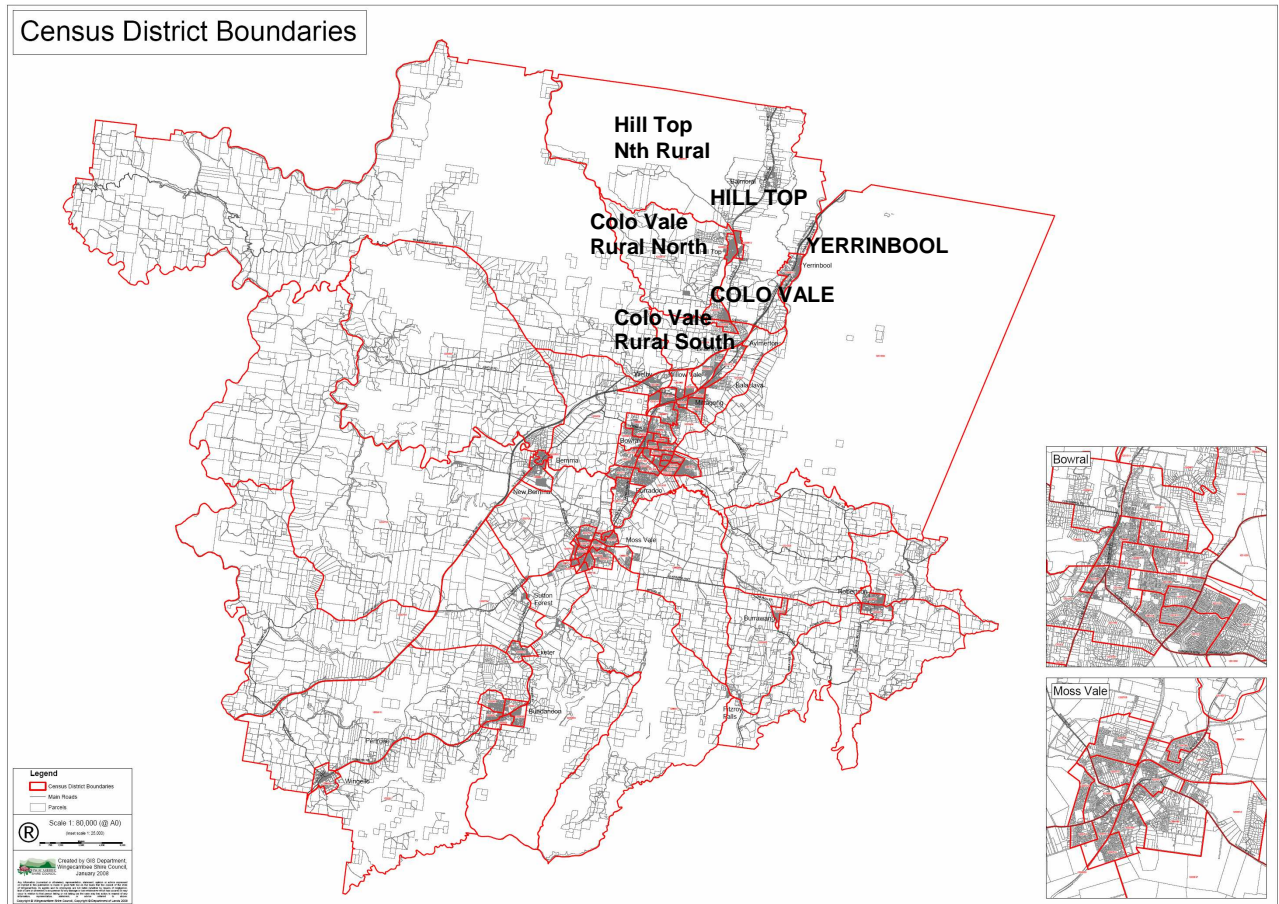
34. Northern Villages and Surrounds Selected Data

Source: ABS 2006 Basic Community Profile

<i>Features</i>	<i>Hill Top Rural North</i>	<i>Hill Top</i>	<i>Colo Vale Rural North</i>	<i>Colo Vale</i>	<i>Colo Vale Rural South</i>	<i>Yerrinbool</i>
	CD 1200606	UCL 139400	CD 1200615	UCL 120400	CD 1200608	UCL 187800
Sq. kilometres	192.6	2.2	51.2	3.5	17.9	3
Description	Rural	Village	Rural	Village	Rural	Village
Total persons	786	1,803	370	1,214	231	1,032
A&TSI persons	8	48	0	26	0	16
Overseas born	111	204	77	167	37	139
Language other than English	18	54	30	62	19	26

<i>Age Groups</i>	<i>Hill Top Rural North</i>	<i>Hill Top</i>	<i>Colo Vale Rural North</i>	<i>Colo Vale</i>	<i>Colo Vale Rural South</i>	<i>Yerrinbool</i>
0-4 years	44	185	26	90	19	119
5-14 years	116	328	74	223	28	168
15-19 years	73	138	23	95	19	62
20-24 years	39	84	8	49	7	44
25-34 years	74	277	33	138	27	150
35-44 years	142	321	73	210	39	158
45-54 years	137	208	50	162	32	126
55-64 years	88	152	49	124	36	105
65-74 years	54	76	19	82	15	66
75-84 years	17	29	14	38	9	24
85 + years	0	3	0	3	0	11
Median Age	38	31	37	35	39	33

Census District Boundaries



	<i>Hill Top Rural North</i>	<i>Hill Top</i>	<i>Colo Vale Rural North</i>	<i>Colo Vale</i>	<i>Colo Vale Rural South</i>	<i>Yerrinbool</i>
Households (OPD)						
Separate house	261	585	113	405	71	352
Semi-detached, row, terrace or town house	3	6	5	-	-	-
Flat, unit or apartment	-	-	-	3	-	-
Other dwelling	4	-	-	-	-	3
Total Dwellings	268	591	118	408	71	355
Average number of persons per bedroom	1.1	1.1	1.1	1.1	1.0	1.1
Av. Household Size	2.9	2.9	3.1	2.9	2.9	2.9

	<i>Hill Top Rural North</i>	<i>Hill Top</i>	<i>Colo Vale Rural North</i>	<i>Colo Vale</i>	<i>Colo Vale Rural South</i>	<i>Yerrinbool</i>
Median Incomes						
Median individual income (\$/weekly)	482	439	480	484	520	437
Median family income (\$/weekly)	1,329	1,087	1,275	1,186	1,262	1,108
Median household income (\$/weekly)	1,230	992	1,291	1,100	1,300	1,022
Median housing loan repayment (\$/monthly)	1,689	1,347	1,652	1,500	1,817	1,500
Median rent (\$/weekly)	150	190	195	205	220	190

	<i>Hill Top Rural North</i>	<i>Hill Top</i>	<i>Colo Vale Rural North</i>	<i>Colo Vale</i>	<i>Colo Vale Rural South</i>	<i>Yerrinbool</i>
Motor Vehicles (OPD)						
None	7	16	3	5	4	14
1 per dwelling	55	192	30	125	10	113
2 per dwelling	122	263	61	182	32	153
3 or more per dwelling	74	102	20	90	24	65

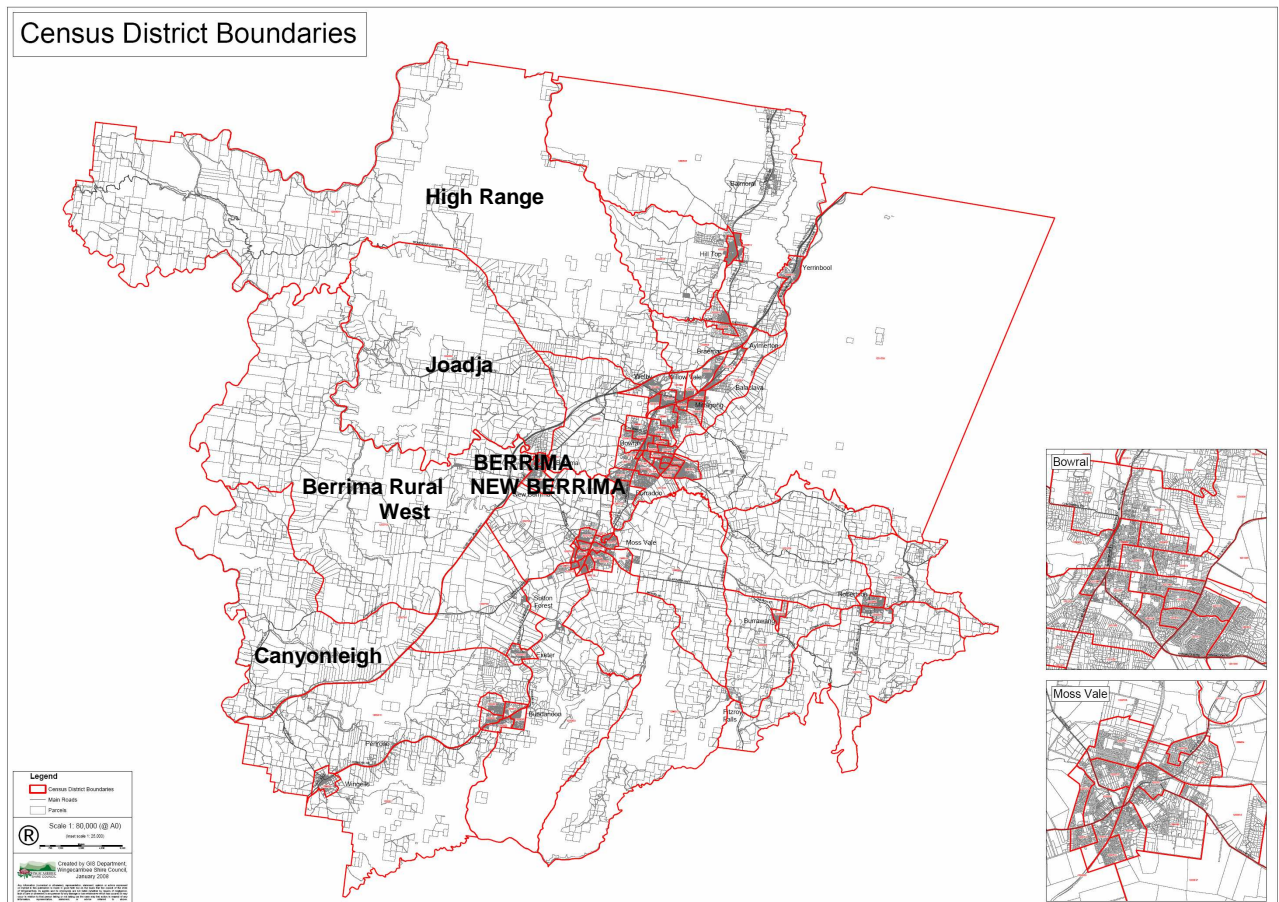
35. Berrima and Surrounds Selected Data

Source: ABS 2006 Basic Community Profile

Features	High Range	Joadja	New Berrima	Berrima	Berrima Rural West	Canyonleigh
	CD 1200604	CD 1200603	CD 1200601	CD 1200602	CD 1200703	CD 1200716
Sq kilometres	457.1	188	3.3	0.7	270.9	129.8
Description	Rural	Rural	Village	Village	Rural	Rural
Total persons	301	498	593	275	427	293
A&TSI persons	0	0	20	21	6	3
Overseas born	27	77	84	71	60	36
Language other than English	9	12	23	8	20	16

Age Groups	High Range	Joadja	New Berrima	Berrima	Berrima Rural West	Canyonleigh
0-4 years	17	19	49	5	27	10
5-14 years	58	78	89	27	68	34
15-19 years	25	50	32	0	43	21
20-24 years	4	8	38	15	9	14
25-34 years	20	37	89	41	32	25
35-44 years	54	79	93	56	75	36
45-54 years	46	100	68	39	65	53
55-64 years	41	88	69	53	59	44
65-74 years	20	25	43	23	34	29
75-84 years	15	15	16	11	12	21
85 + years	0	0	7	4	3	6
Median age	41	43	34	43	39	46

Census District Boundaries



<i>Households (OPD)</i>	<i>High Range</i>	<i>Joadja</i>	<i>New Berrima</i>	<i>Berrima</i>	<i>Berrima Rural West</i>	<i>Canyonleigh</i>
Separate house	88	177	229	94	146	93
Semi, row, terrace or town house	-	-	-	-	-	-
Flat, unit or apartment	-	-	5	-	-	-
Other dwelling	10	-	-	-	-	6
Total dwellings	98	177	234	94	146	99
Average number persons/bedroom	1.1	1.1	1.1	1.0	1.1	1.1
Av. household size	2.9	2.9	2.4	2.0	2.7	2.5

<i>Median Incomes</i>	<i>High Range</i>	<i>Joadja</i>	<i>New Berrima</i>	<i>Berrima</i>	<i>Berrima Rural West</i>	<i>Canyonleigh</i>
Median individual income (\$/weekly)	572	543	460	503	408	424
Median family income (\$/weekly)	1,721	1,466	1,042	1,080	1,100	1,070
Median household income (\$/weekly)	1,275	1,316	885	810	976	956
Median housing loan repayment (\$/monthly)	2,070	1,800	1,300	1,700	1,500	2,000
Median rent (\$/weekly)	19	190	188	250	110	100

<i>Motor Vehicles (OPD)</i>	<i>High Range</i>	<i>Joadja</i>	<i>New Berrima</i>	<i>Berrima</i>	<i>Berrima Rural West</i>	<i>Canyonleigh</i>
None	0	9	19	7	0	3
1 per dwelling	23	28	82	38	33	26
2 per dwelling	37	86	91	44	73	43
3 or more/dwelling	30	51	37	3	37	19

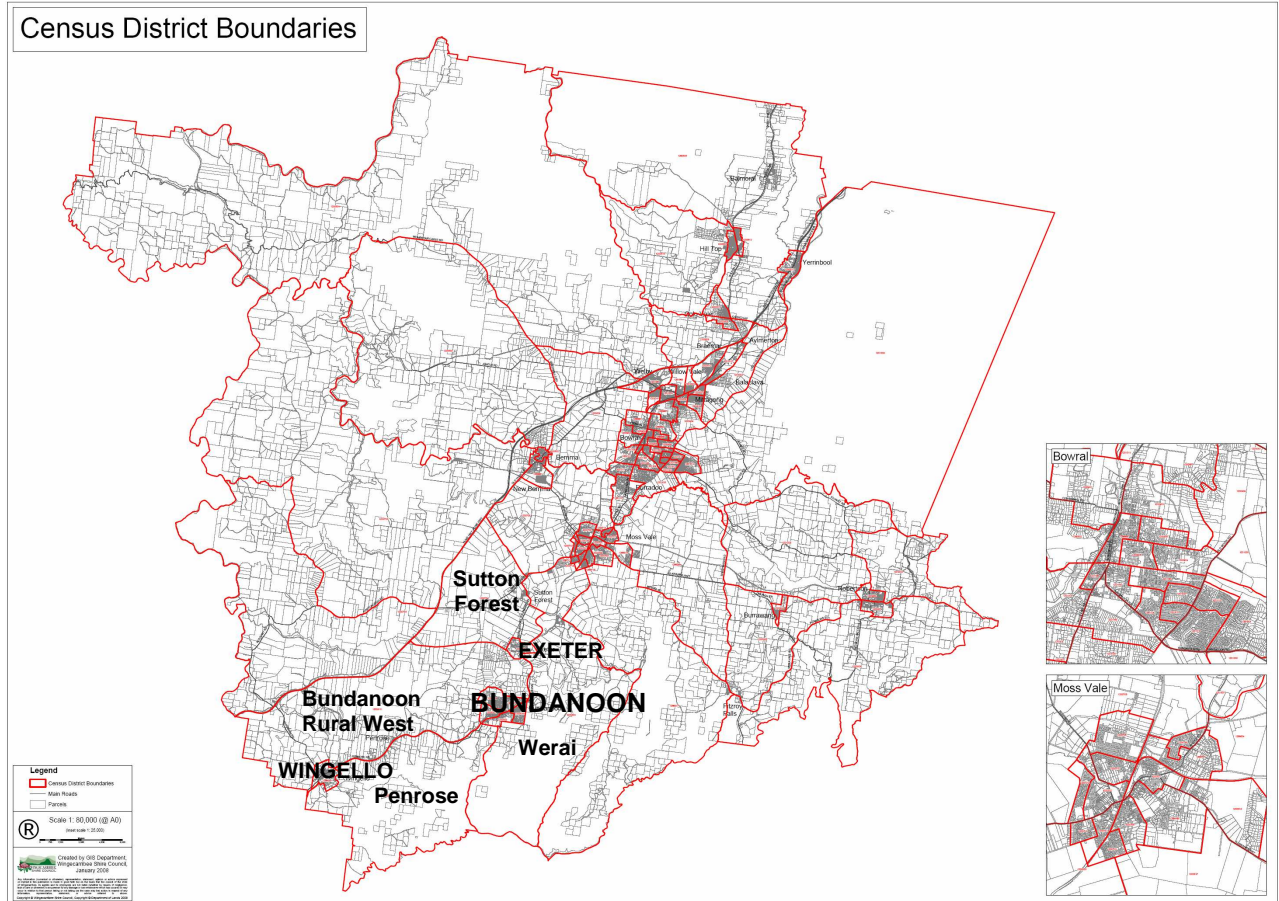
36. Bundanoon and Surrounds Selected Data

Source: ABS 2006 Basic Community Profile

<i>Features</i>	<i>Exeter</i>	<i>Bundanoon Rural West</i>	<i>Sutton Forest</i>	<i>Bundanoon</i>	<i>Wingello</i>	<i>Penrose</i>	<i>Weraï</i>
	UCL130100	CD 1200810	CD 1200704	UCL11480	UCL184350	CD 1200811	CD 1200803
Sq kilometres	2	115.8	49.5	7.5	2.9	84.4	110.5
Description	Village	Rural	Rural	Town	Village	Rural	Rural
Total persons	398	557	253	2,035	308	226	311
A&TSI persons	0	0	4	13	6	5	3
Overseas born	53	94	36	352	38	39	54
Language other than English	6	24	13	61	11	19	11

<i>Age groups</i>	<i>Exeter</i>	<i>Bundanoon Rural West</i>	<i>Sutton Forest</i>	<i>Bundanoon</i>	<i>Wingello</i>	<i>Penrose</i>	<i>Weraï</i>
0-4 years	14	21	14	106	19	15	12
5-14 years	77	65	35	222	49	33	43
15-19 years	18	58	16	98	18	11	18
20-24 years	11	9	6	72	14	9	12
25-34 years	34	26	15	146	28	18	14
35-44 years	60	75	25	249	51	28	44
45-54 years	52	94	40	287	35	34	48
55-64 years	53	111	59	371	41	42	55
65-74 years	55	61	23	288	35	15	45
75-84 years	19	32	14	141	14	10	17
85 + years	4	6	6	55	4	10	3
Median age	42	48	47	49	40	44	47

Census District Boundaries



<i>Households (OPD)</i>	<i>Exeter</i>	<i>Bundanoon Rural West</i>	<i>Sutton Forest</i>	<i>Bundanoon</i>	<i>Wingello</i>	<i>Penrose</i>	<i>Werai</i>
Separate house	147	198	98	784	111	73	115
Semi-detached, row terrace, town house	-	-	-	5	3	4	5
Flat, unit, apartment	-	-	-	14	-	-	-
Other dwelling	-	-	-	14	6	-	-
Total dwellings	147	198	98	817	120	77	120
Average number of persons/bedroom	1.1	1.1	1.1	1.0	1.1	1.1	1.1
Av. household size	2.6	2.6	2.6	2.2	2.6	2.6	2.3

<i>Median Incomes</i>	<i>Exeter</i>	<i>Bundanoon Rural West</i>	<i>Sutton Forest</i>	<i>Bundanoon</i>	<i>Wingello</i>	<i>Penrose</i>	<i>Werai</i>
Median individual income (\$/weekly)	456	446	570	420	349	353	566
Median family income (\$/weekly)	1,146	1,149	1,490	1,044	939	1,087	1,261
Median household income (\$/weekly)	1,042	1,076	1,324	757	812	1,010	1,112
Median housing loan repayment (\$/monthly)	1,387	1,517	2,000	1,450	910	1,000	1,742
Median rent (\$/weekly)	213	140	150	190	150	168	125

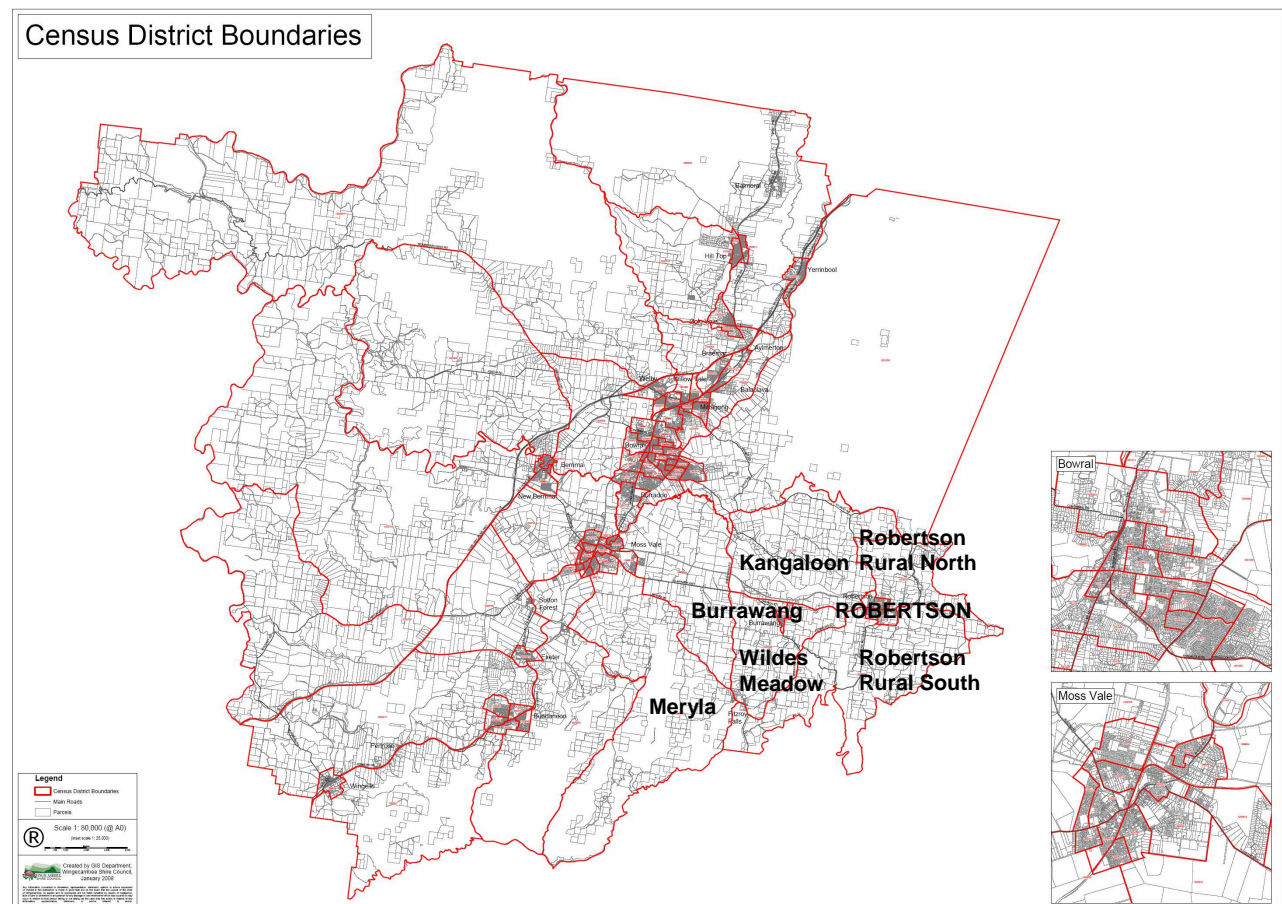
<i>Motor Vehicles (OPD)</i>	<i>Exeter</i>	<i>Bundanoon Rural West</i>	<i>Sutton Forest</i>	<i>Bundanoon</i>	<i>Wingello</i>	<i>Penrose</i>	<i>Werai</i>
None	3	0	0	43	6	4	3
1 per dwelling	58	55	23	367	50	23	29
2 per dwelling	63	95	41	294	49	29	47
3 or more/dwelling	20	46	33	86	7	17	32

37. Robertson and Surrounds Selected Data

Source: ABS 2006 Basic Community Profile

Features	Kangaloon	Robertson	Burrawang	Robertson Rural North	Robertson Rural South	Meryla	Wildes Meadow
	CD 1201008	UCL 167400	CD 1200806	CD 1201013	CD 1200809	CD 1200817	CD 1200805
Sq kilometres	78.5	4.1	1.1	29.7	86.6	132.8	40.4
Description	Rural	Village	Village	Rural	Rural	Rural	Rural
Total persons	337	1,205	176	363	334	301	388
A&TSI persons	5	18	0	6	0	3	3
Overseas born	26	185	30	56	43	26	44
Language other than English	7	28	7	8	10	10	12

Age groups	Kangaloon	Robertson	Burrawang	Robertson Rural North	Robertson Rural South	Meryla	Wildes Meadow
0-4 years	19	104	9	15	18	18	23
5-14 years	36	193	22	44	43	32	44
15-19 years	28	77	4	28	20	10	32
20-24 years	14	46	3	15	7	10	17
25-34 years	21	150	14	25	15	20	17
35-44 years	44	200	24	46	53	26	40
45-54 years	47	164	23	65	52	65	66
55-64 years	68	163	44	64	71	75	77
65-74 years	43	81	22	38	45	24	56
75-84 years	16	20	11	17	7	18	12
85 + years	0	8	0	4	3	3	4
Median age	46	36	51	45	48	51	47



<i>Households (OPD)</i>	<i>Kangaloon</i>	<i>Robertson</i>	<i>Burrawang</i>	<i>Robertson Rural North</i>	<i>Robertson Rural South</i>	<i>Meryla</i>	<i>Wildes Meadow</i>
Separate house	122	413	70	146	123	8	145
Semi, row, terrace or town house	-	-	-	-	-	108	-
Flat, unit or apartment	-	-	-	-	-	-	-
Other dwelling	3	7	-	-	-	-	-
Total dwellings	125	420	70	146	123	116	148
Average number persons/bedroom	1.1	1.1	1.0	1.0	1.1	1.1	1.0
Av. household size	2.5	2.8	2.0	2.5	2.6	2.5	2.6

<i>Median Incomes</i>	<i>Kangaloon</i>	<i>Robertson</i>	<i>Burrawang</i>	<i>Robertson Rural North</i>	<i>Robertson Rural South</i>	<i>Meryla</i>	<i>Wildes Meadow</i>
Median individual income (\$/weekly)	495	439	721	487	505	473	505
Median family income (\$/weekly)	1,149	1,124	1,475	1,240	1,119	1,114	1,233
Median household income (\$/weekly)	1,017	1,023	1,124	1,093	1,031	1,019	1,087
Median housing loan repayment (\$/monthly)	2,167	1,500	1,820	1,528	1,850	2,000	1,517
Median rent (\$/weekly)	175	210	240	200	190	235	180

<i>Motor Vehicles (OPD)</i>	<i>Kangaloon</i>	<i>Robertson</i>	<i>Burrawang</i>	<i>Robertson Rural North</i>	<i>Robertson Rural South</i>	<i>Meryla</i>	<i>Wildes Meadow</i>
None	3	9	0	3	0	0	0
1 per dwelling	31	129	31	40	37	23	40
2 per dwelling	60	195	31	63	55	53	62
3 or more per dwelling	30	78	6	38	29	33	41