

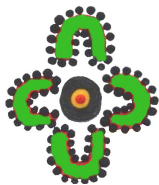
# SECTOR CONNECT

INCORPORATED



## Annual Report 2008/2009

Connecting the areas of Camden, Campbelltown,  
Wingecarribee and Wollondilly



Muru Nanga Mai

families<sup>nsw</sup>  
supporting families to raise children

olunteering Macarthur

## Table of Contents

Table of contents .....	1
Agenda .....	2
Minutes of 2007-8 Annual General Meeting .....	3
Strategic Plan.....	6
Committee Members .....	7
Staff, Students & Volunteers.....	7
Organisation Chart .....	8
President’s Report .....	9
Director’s Report.....	10
Office Manager’s Report.....	18
Training Project Report.....	19
Volunteering Macarthur Report .....	22
Families NSW Report .....	24
Muru Nanga Mai Report .....	26
Election of Management Committee Members .....	28
Treasurer’s Report.....	29
Financial Report .....	30
Statement by Members of the Committee.....	39
Independent Auditor’s Report.....	40
Acknowledgement of Committee Members .....	42



## SECTOR CONNECT INCORPORATED

### Annual General Meeting Agenda 2009/2010

- |    |  |                        |
|----|--|------------------------|
| 1  | Welcome to Country                         | Aunty Val              |
| 2  | Welcome and Apologies                      | Bruce McCausland       |
| 3  | Minutes of Previous AGM                    | Bruce McCausland       |
| 4  | Guest Speaker                              | Donna Crawford         |
| 5  | Presidents Report                          | Bruce McCausland       |
| 6  | Project Reports                            | Staff - Sector Connect |
| 7  | Treasurer's Report                         | Mark Populin           |
| 8  | Declaration of Positions Vacant            | Returning Officer      |
| 9  | Nomination of Management Committee Members |                        |
| 10 | Appointment of Auditors for 2009/2010      |                        |
| 11 | Entertainment                              |                        |
| 12 | Close                                      |                        |

*We invite you to stay for refreshments*

# **Minutes of the 2007/08 Annual General Meeting**

**27 November, 2008 at 10 a.m.**

**Held at 351 Welling Drive, Mt Annan**

Meeting Opened 10.20 a.m.

**1. Acknowledgement to Country by Carolyn Hughes.**

**2. Welcome & Apologies read by Bruce McCausland**

**Attendance:**

Noelene Rudolph (Camden Council), Nhan Tran (DoCS), Margret Husdon (Benevolent Society), Carmel Flavell (Community Links Wollondilly), Michelle Williams (Wingecarribee Shire Council), Mark Pepping (Wingecarribee Shire Council), Kathy McMahon (Macarthur District Temporary Family Care), Sue McManus (Benevolent Society), Kylie Richardson (Macarthur Ozanam), Gloria Bates (MTC Work Solutions), Debbie Roberts (Youth Solutions), Sally Berry (Youth Solutions), Lyn Newton (Wollondilly Resident), Rodrigo Gutierrez (Housing NSW), Lee Rowell (Community Links Wollondilly), Gayle Dunn (Wollondilly Shire Council), Judy Banko (Housing NSW), Bruce McCausland (Campbelltown City Council), Karin Vasquez (MDSi), Joe Parker Brooks (Campbelltown Resident), Tracey Fehon (Community Links Wollondilly), Paul Mowen (Uniting Church), Alice Wood (SWSAHS), Eileen Huxtable (Camden Community Connections), , Johnn Fonseca (DoCS), Jane McIvor (Director), Silvia Tedeski (Staff), Kathy Chalmers (Staff), Deborah Knoke (Staff), Cris McFarlane (Staff)

**Apologies were received from:**

Teresa Harm, Peter Presdee, Kay Bussell, Ven Andrews, Donna Crawford, Julie Baturynsky, Linda Campbell, Mark Populin, Angela Long

**3. Minutes Annual General Meeting 2007 and Special General Meeting (24 July 2008) Passed**

Passed: Karin Vasquez

Seconded: Eileen Huxtable

**4. Guest Speaker**

Allison Peters (NCOSS)

**5. Reports**

**5.1. President's Report**

Moved: Kylie Richardson

Seconded: Alice Wood

**5.2. Director's Report**

Moved: Gloria Bates

Seconded: Shuiringa

**5.3. Office Manager Report**

Moved: Johnn Fonseca

Seconded: Gloria Bates

**5.4. Training Report**

Moved: Eileen Huxtable

Seconded: Karin Vasquez

**5.5. Volunteering Report**

Moved: Kylie Richardson

Seconded: Eileen Huxtable

**5.6. Families NSW Report**

Moved: Karin Vasquez

Seconded: Schuiringa

**5.7. Muru Nanga Mai Report**

Moved: Bruce McCausland

Seconded: Lyn Newton

**6. Treasurer's Report**

Moved: Lyn Newton

Seconded: Bruce McCausland

**7. Special Resolution**

The vote was nine (9) votes in favour, nil against and one abstained.

It was resolved to adopt the proposed change of name and the proposed changes to the Constitution.

**8. Declaration of Positions Vacant**

Bruce McCausland handed over to Returning Officer.

## **9. Nomination Of Management Committee Positions**

The Returning Officer declared:

The following members have resigned from the Committee:

Melanie Andrews

Sarah Wilson

Eileen Huxtable

Linda Campbell

And Bruce McCausland has to re apply, this creates five positions on the committee.

Five applications for the new Management Committee were received by 20 November, 2008:

Bruce McCausland

Gloria Bates

Mark Populin

Noelene Rudolph

Ally Dench

These nominations plus the four retained Committee Members fills all positions on the Management Committee.

All nominations accepted.

The President will continue in this role until the next board meeting. The cheque signatories will also continue until the next board meeting.

Moves: Gloria Bates

Seconded: Karin Vasquez

## **10. Appointment of Auditor**

It was agreed to remain with Accountcorp for 2008/9.

Moved: Bruce McCausland

Seconded: Schuiringa

## **11. Appointment of Public Officer**

It was agreed that Lyn Newton fill the Public Officer position for 2008/9.

Moved: Gloria Bates

Seconded: Eileen Huxtable

**On behalf of the Sector Connect, Bruce thanks all in attendance, the retiring committee and welcomes the new committee.**

Meeting Closed at 11.50 a.m.

# STRATEGIC PLAN 2008-13

## SECTOR CONNECT INCORPORATED SERVES

Non-government sector (NGOs) of Macarthur and Wingecarribee

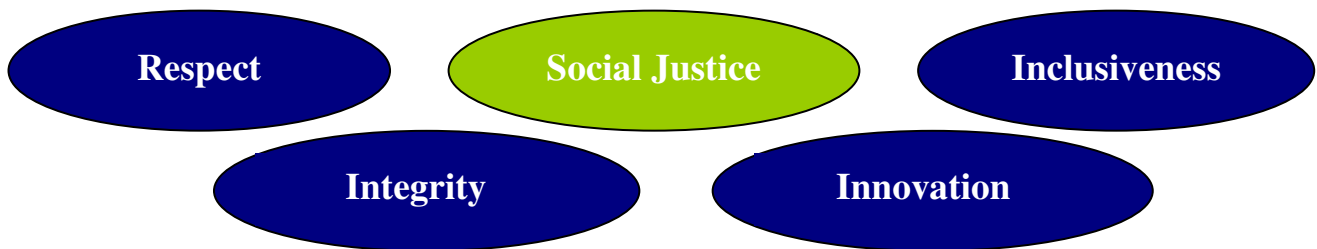
## SECTOR CONNECT INCORPORATED'S VISION

The whole community, working together to meet human needs.

## SECTOR CONNECT INCORPORATED'S PURPOSE

Sector Connect Incorporated connects diverse communities and services to produce viable regional planning and effective local services.

## SECTOR CONNECT INCORPORATED'S CORE VALUES



Goals	Strategies	Outcomes
Sector Connect is a best practice organisation	<ul style="list-style-type: none"> <li>• Re-branding of Sector Connect</li> <li>• Best practice admin systems</li> <li>• High performance team practices</li> </ul>	Sector Connect is a highly regarded, financially viable and effective organisation
Member NGOs are strong and effective	<ul style="list-style-type: none"> <li>• Training and development program for NGOs</li> <li>• Sector Development program</li> </ul>	Member NGOs have an average self rating of "Strong and effective" in the Annual Survey of Viability
Sector Connect has strong and diverse connections	<ul style="list-style-type: none"> <li>• Interagency and forum initiatives</li> <li>• Funded projects</li> <li>• Relationship development strategy</li> </ul>	There is a diverse and strong representation at Sector Connect Management Committee meetings and interagency/forum meetings
Sector Connect advocacy is effective	<ul style="list-style-type: none"> <li>• Targeted and structured advocacy program</li> </ul>	NGOs and MPs report high rating for Sector Connect advocacy

## Management Committee Members 2008-2009

---

### President

Bruce McCausland      Campbelltown City Council

### Vice President

Fiona Devine      Community Representative

### Treasurer

Mark Populin      Interchange Wingecarribee

### Secretary

Noelene Rudolph      Camden Council

### Public Officer

Cris McFarlane      Sector Connect Inc.

### Committee Members

Gloria Bates      MTC Work Solutions

Rachel Bennewitz      Australian Foundation For Disability (AFFORD)

Annick Leach      YWCA NSW

Mark Populin      Interchange Wingecarribee

## Staff 2008-2009

---

### Staff

Jane McIvor	Director
Ven Andrews	Volunteering Macarthur
Cris McFarlane	Office Manager
Deborah Knoke	Families NSW Project Officer
Leo Dynevor	Team Leader (from March 2009)
Jeanne Duffy	Administration Officer (from June 2009)
Patricia Ceulen	Training Coordinator (from June 2009)
Kathy Herron	Bookkeeper (from July 2009)
Chad Ritchie	Aboriginal Liaison Officer (from September 2009)
Silvia Tedeski	Training Coordinator/Administration Officer (till May 2009)
Kathy Chalmers	Bookkeeper (till July 2009)
Kay Bussell	Aboriginal Liaison Officer (till January 2009)

### Student Placements

Lauren Saville      Kerry Evans

### Volunteers

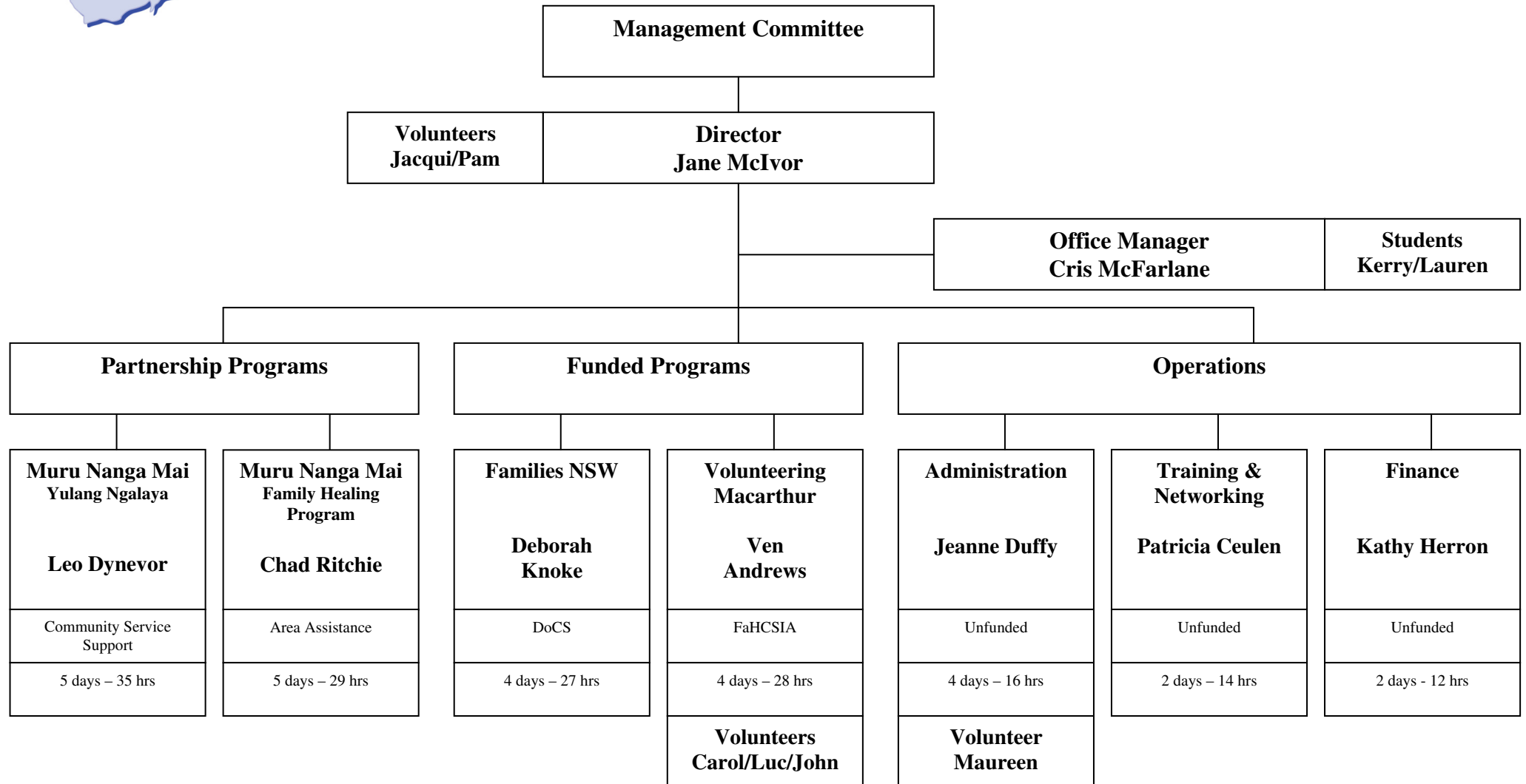
Maureen Hooton	Luc Chasle
John Dockerty	Pam McCorriston
Jacqui Baird	Carol Harley



# Sector Connect Incorporated

## Organisational Chart

As at September 2009



## President's Report

---

The past twelve months have seen some significant changes for Sector Connect. Firstly, there has been a change in name that reflects the coverage of, and connection with Wingecarribee. This formalises the inclusion of community services from Wingecarribee, and matches the changes in funding boundaries of the Department of Community Services.

Going with the name change has been a new logo that represents the area and the connections that the Organisation makes.

A number of changes in personnel have also occurred. I would like to thank Karin Vasquez, Lyn Newton, Julie Baturynsky, Joe Parker-Brooks and Ally Dench for their contributions to Sector Connect. Karin was a committed member of the Management Committee for many years. During this time she held the office of Treasurer and focused the Organisation on financial sustainability. Lyn held the office of Secretary and worked to improve the governance processes of Sector Connect. Although a member of the Management Committee for a shorter period, Julie was dedicated to strengthening the support of staff.

I would also like to thank two long standing staff members who left during the year. Silvia Tedeski will be known to many as a key contact person for Sector Connect through the email distribution network that she built, and through her role in managing interagencies and training for Sector Connect. Kathy Chalmers may not be so well known as she played a backroom role in developing sound financial systems for the organisation. Thanks also go to Kay Bussell for her role in building the Mura Nanga Mai project.

The year ahead will require focus for Jane as Director and for the Management Committee in dealing with competing priorities and an increasingly complex service environment. This task should be made clearer with some key directions from the Strategic Plan and the feedback from surveys of staff and member organisations.

I look forward to the continuing development of Sector Connect with the knowledge that there are competent and committed people working for the success of the organisation. My final thanks go to the continuing members of the Management Committee and staff for their support and enthusiasm.

***Bruce McCausland***

Management Committee President

# Director's Report

---

**July 2008 – June 2009**

Sector Connect has gone through some major organisational change and growth during the past year. With any change come challenges that have forced both management and staff to review our internal structures and relationships to ensure we continue to grow in strength as the representative regional peak body for Macarthur and Wingecarribee. It has been a sharp learning curve for all concerned but also positions us well to pass on these learnings to the sector. It is exciting to see the team at Sector Connect begin to really develop their skills and understanding of the region and I would like to take this opportunity to thank both past and present staff and Management Committee members for their hard work during 2008-09.

Sector Connect has wrestled with the implementation of our Strategic Plan due to the complexities the Results Based Accountability (RBA) framework brings. We have however preserved so that we are better positioned to support other NGOs implementing RBA as the way of the future with most government agencies. Therefore my report is grouped under the four main goals of Sector Connect's RBA Strategic Plan.

## **SECTOR CONNECT IS A BEST PRACTICE ORGANISATION**

Sector Connect aims to be a best practice organisational example for the region. This year has seen extensive work on our internal communication, our administration systems, our team objectives and our revenue stream initiatives. It is clear that all projects of Sector Connect are working at capacity and it is for this reason that 2009-2010 we plan to focus on consolidating current operations so that we develop a strong platform for further growth.

The beginning of 2009 saw the rebranding of Macarthur Community Forum to Sector Connect due to Wingecarribee becoming part of our region. The change has proved to be very positive and it has been exciting to see our engagement with Wingecarribee grow across all projects of Sector Connect as a result.

Sector Connect's office has also gone through some upgrades in an attempt to more adequately house the growing team. These improvements would not have been possible without the support of our skilled volunteers, in particular John who I would like to say a big thank you to. Space unfortunately continues to be an issue despite the renovations and we continue to seek opportunities to develop further.

The new server caused us some major initial problems but we hope with its capacity we can further develop our website and improve the effectiveness of our email dissemination to the region. To get the system right for everyone has proved very difficult and Sector Connect is keen to receive feedback on any changes so that we can provide a helpful service to the region.

Sector Connect has significantly increased its use of volunteers during 2008-09 and we are blessed with a team of 6 highly skilled people that support our work. With a number of staff changes during the year the volunteers have been invaluable in keeping projects functioning during recruitment and have brought a whole new dynamic to the team. Sector Connect currently has a strong focus on team development and increasing joint projects across the organisation to provide additional support to the project workers. This has been further enhanced by introducing an Employee Assistance Program for all staff and volunteers of Sector Connect.

Sector Connect remains financially strong but is keen to explore more innovative funding opportunities in an attempt to move away from short term, fragile government funding programs as our core source of income. Sector Connect has been developing relationships with local corporates, business networks and formalising partnership agreements with small business to enable this to happen. Sector Connect has also been exploring avenues where fee for service would be appropriate and working with Our Community to provide information to the region on alternative funding options. Work continues on this and further information will be made available.

Sector Connect is still seeking PBI / DGR status to enable salary packaging for our staff and to increase opportunities to work with the business sector. It is challenging as a regional peak that does not deliver on the ground service provision to be eligible but work continues to achieve this.

Sector Connect also continues to face the challenge of the majority of our networks not being financial members. A number of our staff do not receive funding but rely on paying members to supplement their wages. With increased financial membership we would be better placed to provide more targeted worker training, improve interagency engagement, provide more effective information dissemination and stand as a stronger regional peak. We are not keen to cut services to non financial members but we ask that you consider paying our very reasonable fees to support your regional peak's services to the region.

### **SECTOR CONNECT'S MEMBER NGOS ARE STRONG & EFFECTIVE**

Sector Connect maintains network coverage of over 750 contacts across Macarthur and Wingecarribee and provide the dissemination point for information for the region. The amount of information coming through our emails has significantly increased during 2008-09 and as a result we are now trialling new systems to more effectively address the needs of the sector.

One of the main focuses of Sector Connect is the development of stronger service systems and networks to enable improved collaborative work practices and to ensure Sector Connect remains well connected with its members as the representative body for this region. It is essential that the local needs and issues are heard and addressed in the broader arena and that organisations are kept abreast and engaged in new initiatives and changes to policy in order for NGOs to remain strong and effective. This has been achieved through the projects and initiatives outlined in this report.

### **YOUTH SECTOR MODEL DEVELOPMENT PROJECT (YSMDP - BETTER FUTURES):**

The YSMDP has provided Sector Connect with a unique opportunity to support and strengthen the youth service system across Macarthur and Wingecarribee. A report is due to be released in late October (and can be found on our website [www.sectorconnect.org.au/projects](http://www.sectorconnect.org.au/projects)) that incorporates in depth mapping of youth services, identifies the needs of the region and provides some concrete recommendations on moving the youth service system forward. Sector Connect has facilitated a whole of government reference group that has directed this project development to date. The engagement of senior workers from government provides the project with a real opportunity to make changes to the youth service provision and it has also enabled strong relationships to build through the partnership that will support other projects and needs as they arise. The report forms Stage 1 of this project. Stage 2 is to implement the service system recommendations in Campbelltown and Stage 3 in Camden, Wollondilly and Wingecarribee. Stage 4 will evaluate the project effectiveness. The report is a public document and Sector Connect is already aware of a number of groups that will use its content more broadly to improve services to young people.

### **MANAGERS NETWORK:**

The Managers Network continues to look at strategic issues for the region and during the past year has become more actively involved in advocacy at a local level. In August 2008 the network presented a Community Services Snapshot document to both local state and federal MPs that outlined in simple terms what community services is and the difference we make, main issues of

concern for the region and a series of case studies from individual organisations. This lobbying tool was well received by all MPs.

The Managers Network remains the main consultation base for government submissions and inquiries but through an evaluation of the network in late 2008 it was determined that broader level advocacy would be dealt with through email to free up the bi monthly meetings to address local issues. The network is currently unpacking how to improve collaborative local planning and service delivery and are exploring whether a seminar should be held in 2010 to encourage more open dialogue across the sector.

#### BACK OFFICE PROJECT:

Sector Connect have been working for over 12 months with DoCS head office to set up a pilot back office project in the Macarthur/Wingecarribee region aimed to support organisations with a suite of back office functions at not for profit costs. It will not only provide local expertise to services at a time when accountability requirements are becoming much tighter but will also provide flexible employment opportunities and bridge the gap between the business and community service sector. Unfortunately in November 2008 the seed funding was cut as part of the massive cuts to government departments in the mini budget. Sector Connect has since been seeking alternative options to get this much needed service off the ground and will be seeking seed funding over the next year where possible.

#### ENGAGEMENT WITH BUSINESS:

Sector Connect continues to explore ways to better harness partnerships with the business sector to support NGOs. Volunteering Macarthur conducted a very useful Corporate Volunteering survey in 2008 to determine how NGOs could engage volunteers from business. Suncorp, local solicitors, Unilever Ice-cream, local coffee shops and a number of other local businesses have been actively engaged to support and resource NGOs as a result.

Sector Connect continue to re-evaluate the best options to enable positive engagement with business. Sector Connect maintains contacts with all the Chambers of Commerce across the region, the Business Enterprise Centre (BEC) and MACROC and regularly attends network meetings. This broad stroke approach has not achieved as many results as we would like and so have now taken to a more direct approach. An example of this is the potential partnership with the Macarthur Credit Union that is currently under negotiation.

Sector Connect has also been keen to explore the social enterprise engagement and has made a number of important connections during the past year. Sector Connect was involved in the Alchemy Project under FAR Enterprise which developed a report on workforce and leadership development in the not for profit sector. The aim is that FAR will work with the regions to implement some of the recommendations. Other social enterprises that Sector Connect has worked with this year include Social Ventures Australia, Business Network Initiative, School of Social Entrepreneurs, United Ways Common Cause Project and the School for Social Impact. Sector Connect sees that to maintain strong and effective NGOs we need to look outside the square from historical funding models and give the services more control of their viability. Business and social enterprise would form an important avenue for this to happen.

#### ABORIGINAL WORK:

Sector Connect is proud to have Muru Nanga Mai under our auspice with the aim to develop this grass roots incorporated Aboriginal organisation to a point where it can stand alone as a strong Aboriginal organisation. This year has seen some major growth in Muru Nanga Mai with the successful application for the Community Services Support Program under FaHCSIA. This program will operate 3 intake and referral services for the Aboriginal community across Macarthur. Leo Dynevor has been appointed team leader with Chad Ritchie working on the Area Assistance Family Healing Project that is only currently funded until June 2010. An administration worker will also be recruited in November 2009 to man the 3 sites.

Sector Connect works closely with the Muru Nanga Mai Board to educate and ensure ownership of the projects. The set up of the new funded program has seen the Board begin a steep learning curve on project development, writing work plans and meeting funder timeframes. It has been agreed that short training sessions on specific subjects at the beginning of each Board meeting is a more effective way to educate and inform the Board and financial management is next on the agenda.

Muru Nanga Mai has also developed some strong partnerships over the past year. From the Muru Nanga Mai house in Minto we have a supported playgroup running in partnership with Campbelltown Family Support, a Positive Parenting Poster Project about to be launched, a weekly women's group and a youth and men's group being established in partnership with TAC and SSWAHS. These connections have significantly strengthened Muru Nanga Mai as an organisation.

Sector Connect has also received a small sum of money for an Aboriginal Capacity Building Project for Greater Western Sydney to support the governance of smaller Aboriginal organisations and can include Muru Nanga Mai. This will be led by an Aboriginal sub group under the Aboriginal Child and Family Strategy (DoCS) and has not yet commenced.

#### SHARED SERVICES / HUB DEVELOPMENT:

Sector Connect has been working closely with the state peaks on available research and case studies of effective shared services as a result of the NCOSS Shared Service Seminar in November 2008. Shared service models are being more commonly used across the country as a way to more effectively deliver services to the community. The YSMDP and the Wingecarribee Family and Community Centre work has been supported by Sector Connect as a result and further work is planned around developing further models.

#### TRAINING:

Sector Connect has taken an active role in the roll out of RBA to the region. Five RBA mentors have been trained up during 2009 through Family Worker Training and Development to support the implementation. Families NSW have also been piloting a staged approach to RBA, from training in the basics to implementation and this has been fairly successful. Sector Connect sees it continues to have a vital role to play in supporting services through the implementation of RBA and is keen to build on this in 2009-2010.

Sector Connect in partnership with TRI Community Exchange were successful in getting funding through the IMB Foundation to run half day IT courses covering all common software packages. 40 training sessions were run during 2008-09 and were well received by the sector. Further courses are possible through TRI Community Exchange but we are currently negotiating appropriate fees.

Sector Connect ran Cert IV in Frontline Management in partnership with My Gateway Apprentice Centre and Macarthur Disability Services during 2008. 12 organisations completed the course which will improve their ability to keep their services strong and viable through business management techniques.

Sector Connect does not receive any funding for professional development of workers and so we work in partnership with other services to provide the training calendar. Partners this year include Western Sydney Community Forum, Macarthur Disability Services, Brief Therapy Solutions, LCSA, TRI Community Exchange, My Gate, Mental Health Council of Australia, Autism Spectrum, Compeer, Benevolent Society, Uniting Care Burnside, Macarthur Diversity Services, Volunteering Australia, Centre for Volunteer Management, Practical HR Solutions, Macarthur DV Court Assistance, Mission Australia, Community Links Wollondilly, Campbelltown Council, Nursing Group, Camden Community Connections, Campbelltown TAFE & UWS and ITAB / VTAB. A formal partnership has also been developed with Brief Therapy Solutions to provide the training courses developed for Families NSW networks to be delivered beyond the region.

Sector Connect would like to take a more targeted approach to training but has limited capacity to refocus and renew viable models of training, learning and development with inadequate resources. Through our partnership with WSCF we did get the opportunity to consult the sector on the most effective training models and this work has provided important information for future training. Sector Connect is currently working with David Puckeridge and Our Community to provide support and training in innovative funding opportunities in order to strengthen NGOs and this in turn could also support us in developing a stronger professional development arm. We are also exploring other models of NGO support such as the Illawarra Forum's Centre for Community Sector Development and LCSA's Targeted Capacity Building Project and have already made an agreement that resources from the last project can be used on our website once complete.

## **SECTOR CONNECT HAS STRONG & DIVERSE CONNECTIONS**

Sector Connect is committed to maintaining strong and diverse connections and this can be seen through the various networks, interagencies and forums run through our projects and as reported in this report and the project officers report. Sector Connect works hard to engage marginalised groups and examples of this include Aboriginal Cultural Awareness Training, CALD Best Practice Forum, volunteer support to all public housing estates, developing MacUnity as a strong network and specific strategies to engage rural areas such as Wingecarribee. Sector Connect aims to keep abreast of the needs and surveyed all interagencies run under Sector Connect between July and November 2008 to review their effectiveness. The results of the surveys have been very positive but further work is outstanding on developing stronger collaborative service systems that do joint planning and projects, necessary for organisations to remain viable into the future. Work is also pending on how each of the interagencies inter-relates to reduce worker time attending more meetings than is necessary.

The Agencies Exchange Day held in early 2009 in partnership with MACNET (network of Neighbourhood Centres) was a great success. This provided organisations with the opportunity to showcase their services and was a helpful chance for networking.

MacUnity has really grown in strength during 2008-09 with approximately 70 people now on the member base of which many are Aboriginal. MacUnity aims to bridge the gap between Aboriginal and mainstream service provision to improve outcomes for the Aboriginal community. The network is co-facilitated with Aboriginal representatives and has worked hard this year to bed down its unique role and to operate using Aboriginal principles and practices. The network has developed a service directory that is posted on the SW Koori Website, mapped all Aboriginal and mainstream networks to determine MacUnity's role and amalgamated local consultations on Aboriginal needs within the region. Through this work and relevant research Aboriginal youth services was identified as a major gap in service provision and the network is currently developing a proposal to present to mainstream youth services and avenues into government. MacUnity has begun to provide a vital service system development role for the Aboriginal community and will be an important asset to support the Community Services Support Program under Muru Nanga Mai.

Sector Connect is also auspicing the Macarthur Food Fairness Forum and related working group stemming from a Poverty Week seminar in October 2008 with Macarthur having some of the highest statistics relating to obesity and food insecurity in the state. The working group is made up of very strong partner organisations including SSWAHS and MDSI to mention a few and a successful Campbelltown Forum was held in late September 2009 that will feed into the Sydney Food Summit in late October. Sector Connect is keen to support this work through Families NSW and to lobbying for a more adequate secure food supply for the community of Macarthur / Wingecarribee especially considering the large pockets of disadvantage affected by this.

Sector Connect continues to facilitate the Community Development Support Expenditure (CDSE) funding round for Campbelltown registered clubs. Sector Connect has developed strong working relationships with all the clubs and this has significantly impacted on how the funding is distributed and the local priorities that are set. In 2009 \$44,850 was distributed to 14 projects in Campbelltown, with 70 applications in total. In 2010 Sector Connect will also be involved on the Wingecarribee CDSE committee as the NCOSS representative for this region.

## **SECTOR CONNECT ADVOCACY IS EFFECTIVE**

An important part of Sector Connect's role is to ensure the needs and issues of Macarthur and Wingecarribee are heard at a regional, state and federal level. It is for this reason that Sector Connect is represented at state peak forums (FONGA, NCOSS, LCSA, YAPA, FAMS to mention a few), regional government forums (Families NSW Project Management Group, DoCS Multicultural Advisory Group, Centrelink Multicultural Advisory Forum) and have attended two Federal Cabinet meetings and one State Cabinet meeting during 2008-09 which involved meeting with relevant Ministers on issues of importance for the region. Sector Connect has developed strong relationships at these levels and are often asked to comment on issues that arise. Sector Connect is also represented at the quarterly Regional Forums where all the Forums across the state gather at NCOSS to discuss common issues and to develop collaborative strategies and joint lobbying campaigns. The main focus of our campaigns this year is around the Community Services Grants Program (CSGP), Keep Them Safe and Area Assistance.

To ensure effective advocacy Sector Connect maintains strong working relationships with all local state and federal MPs in this region. Issues that have been raised during the past year include:

- Regional forum representation on the new Regional Development Australia committees (Illawarra Forum are representing Wingecarribee and Western Sydney Community Forum are representing Macarthur),
- The CSGP and Area Assistance reviews,
- Volunteering and the impacts of the financial recession and changes to Centrelink rules;
- Community Services Snapshot (as mentioned above),
- Issues obtaining PBI / DGR status

Strong relationships with the media are also an important aspect of effective advocacy. Sector Connect have developed strong working relationships with the local and national media this year and these connections helped support a media campaign regarding Minto Mall. The media often will contact Sector Connect for comments when relevant.

Sector Connect has become aware that advocacy needs to be more targeted to gain real results and so during 2008-09 a more strategic approach has been adopted for government inquiries, submissions and other advocacy opportunities. Sector Connect has input into state and federal peak submissions when relevant, using the local mechanisms to ensure local input is incorporated. Sector Connect has also worked specifically on a number of different priority areas, with a strong push from the region to focus on issues closer to home. Advocacy addressed during 2008-09 are as follows:

- Transport continues to be a major area of concern for the region and impacts significantly on social inclusion and community participation at all levels. Sector Connect has been working in partnership with Western Sydney Community Forum on Connecting with Buses, has been involved in the Wollondilly Transport Forum and intends to support the recommendations where possible and has been attempting to set up the SW Interagency for Transport (SWIFT). The aim is to have an integrated transport strategy for the region with all transport providers, government departments and stakeholders meeting quarterly to develop this. Work continues on the development of this structure.
- Inquiry into Charitable Status

- NCOSS Regional Consultations in October 2008 to feed into state priorities and pre budget submission
- ASU CARE Campaign holding regional consultations
- Inconsistent indexation across state and federal government departments
- Input into the State Plan Review through NCOSS Conference 2008
- Regional Forum and NCOSS looking at the issues related to DADHC efficiencies
- Issues related to the state government boundary changes to incorporate Wingecarribee with no additional funds for services to deliver in this area
- The impact of competitive tendering on the not for profit sector. Sector Connect in partnership with UWS and WSCF have now completed a research document after in depth consultation across the regions and a number of seminars. Hard copies of the paper is available from Sector Connect's office or you can find it on our website "Competitive Tendering and Purchase of Service in the Community Sector" ([www.sectorconnect.org.au/publications](http://www.sectorconnect.org.au/publications)). This is a public document that we recommend you use where appropriate.
- Input in to the new Community Services Training Package
- Input into the Human Rights Charter for Australia
- Input into Partnerships in Employment development through representation on the steering group
- Input into the Australian Productivity Commission's inquiry into the Contribution of the not for profit sector
- Volunteering Macarthur, through the state Volunteer Centre Network has been invited to input into the joint state/federal volunteer initiative to improve support and resources for volunteering. Through this VM has input into volunteer government policy development and has built strong relationships with the government as a result.
- Providing mental health consumers on disability pensions the opportunity to participate in traineeships and productivity places
- Input into the new Incorporations Act through NCOSS
- Housing and homelessness issues. Sector Connect ran a joint forum with Shelter NSW in November 2008 to consult on the issues of housing affordability and homeless in this region to inform a state wide campaign. Sector Connect were also invited to provide a submission to the Senate Select Committee on Affordable Housing
- Input and ongoing engagement with the NSW Homelessness Action Plan 2009-2014
- Input into the National Compact development
- Input into COAG and National Reform Agenda
- Input into the Social Inclusion Agenda
- Input into Area Assistance priorities for 2008
- Submission and media coverage on the SW Subregional Plan
- Input into the Woods Inquiry into Child Protection
- Input into further developing Working Together for NSW to raise its profile as a state government document
- Input into the State Grant Administration Audit

## **FUTURE DIRECTIONS OF SECTOR CONNECT 2009-2010**

Sector Connect sees some concentrated focus is needed in 2009-2010 to strengthening the service systems across the region to encourage essential collaborative planning and service provision that should in turn strengthen the organisations involved. We have noted a steady decline in effective practice due to competitive tendering and resource poor workers not having the time to engage. This is significantly impacting on the sector. As part of this work we are keen to improve our information dissemination systems to more effectively service the region.

Sector Connect is also keen to continue to improve its connections with diverse communities and minority groups and is excited to see the roll out of the Community Services Support Program under Muru Nanga Mai and further development of MacUnity.

Sector Connect has gone through some major growth over the past few years and as mentioned previously will be using 2009-2010 to consolidate its work and improve the projects and services that we already provide. It is important that we build a strong platform at this time in preparation for future growth.

**Jane McIvor**  
**DIRECTOR**

## Office Manager's Report

---

The expansion and growth of Sector Connect has brought about extensive changes to the infrastructure of the systems and processes that supports every aspect of the Organisation. Combined with the Organisation adopting Results Based Accountability methods into its Strategic Plan has resulted in a complete review of everything anyone does, and how it's done, within the Organisation.

Everything from how any bit of information flowed through the Organisation to where staff sit has been reviewed. Nothing this size or complexity has been undertaken by the Organisation since its establishment, at which time the Organisation was quite small. The review highlighted that the Organisation would need to be rebuilt with very little being retained of the old structure. The review also highlighted that there was nothing wrong with the old structure and processes; it just could not support the strategies of the Organisation to achieve our strategic goals.

A change seen by all has been the renaming of the Organisation to Sector Connect Incorporated and re-branding that required the change of all stationary, internally and externally, website address, email addresses, mailing and contact addresses and rewriting/creating the internal policies and procedures to reflect our core values of Social Justice, Respect, Inclusiveness, Integrity and Innovation. Each change undertaken was checked to ensure that the change met best practice and contributed towards our strategic goals.

Implementing best practice was not a matter of choosing what was the cheapest or dearest, biggest or smallest, most or least used but chosen to individually follow our strategic direction by building a resilient and complimenting platform to support our structure. A major building block we implemented was a new computer system that supports our structure now and into the future. The new system's "expertise" is the ability to handle volume information over a large geographical area. This expertise supports our continuing commitment to the Sector of being a hub for disseminating information throughout the sector in an effective and meaningful way.

Each change requires a transition period, moving from one process to another and in this period is where most of the difficulties with change arise. Each member of the Organisation required up-skilling with each transition which only strengthened the performance, quality and quantity of each worker, although no transition is not without its difficulties. To the Sector, our most evident difficulty was with the initial implementation of our email system which caused considerable frustration to all concerned.

However, we are now on a base that is strong enough to offer the Sector more effective and meaningful information, training, networking and development opportunities, beyond what the old structure could, that will produce a strong, effective and diverse Sector.

Our focus now is to build upon the base a strong intertwined, consolidated and complimenting internal structure, removing the "silo effect" associated with projects, by utilising all the resources of the Organisation to build a knowledge-base of the sector with deep insights into the gaps and issues to raise the level and effectiveness of advocacy as an Organisation representative of the Sector.

We will continue to review, create and modify our self to ensure we provide the best possible service to the Sector as the peak representative body for Camden, Campbelltown, Wingecarribee and Wollondilly.

*Cris McFarlane*

# Training Project

---

The Training Project was originally funded in 2002 by NSW Planning through the Area Assistance Scheme. The program has been a great success and has been widely utilised by agencies and workers in the Macarthur area. The funding ran out in June 2006 and it has taken a considerable amount of creativity and energy to continue to provide training with very little capital.

The success of the Training Project is largely due to the strong partnerships that have been forged and I would like to take this opportunity to thank all those agencies and workers who have made this project a success. I would like to thank and acknowledge Silvia Tedeski's work in this role up to May 2009. I was appointed to the position in late May 2009.

## TRAINING

The Training Project has continued to identify the training needs of the community service workers within the Macarthur Wingecarribee region through training surveys, evaluations and Interagency meetings. Utilising this data the Training Calendars and programme for 2008/9 were established.

Two Training Calendars have been produced in this time:

Macarthur Training Calendar July – December 2008

Macarthur Training Calendar February – June 2009

As well as training offered by the Sector Connect, the Calendar also features meeting dates for the Campbelltown, Wollondilly and Macarthur Interagencies as well as for the Manager's Network, MYSN meetings, MacUnity, the Macarthur Child and Family interagency and Highlands Child.

Sector Connect was successful in securing funding through the IMB Community Foundation and in partnership with TRI Community Exchange were able to provide 20 I.T training workshops to not for profit sector workers. This enabled 152 workers the opportunity to improve their knowledge and skills about I.T programs. Some of the I.T. training offered included:

- Introduction to Word 2003
- Introduction to Excel 2003
- Introduction to Power Point 2003
- Introduction to Publisher 2003
- Introduction Photoshop Elements V6
- Intermediate Excel 2003
- Intermediate Word 2003
- Advanced Word 2003
- Internet Skills
- Introduction Access 2003
- Free and Open Source Applications
- Planning Your Website
- Introduction to Windows Movie Maker
- Introduction to Blogs
- Internet / Security Email

During 2008/9 there were 11 training workshops offered. The majority of training was conducted at the Training Room, 351 Welling Drive, Mt Annan. Other venues included the Lifeline Centre at Smeaton Grange and Mt Annan Botanical Gardens

Training presented by Sector Connect has included:

- Mental Health Awareness Workshop
- Planning and Reporting
- Carer Engagement Program
- Policy and Procedures
- Creating Compassionate Energy – The Power of One
- Child Welfare and Development – Recognition and Practice
- Supervision and Conflict Resolution
- Looking Through The Telescope
- Everyday Leadership
- Challenging Behaviour Workshop
- Facilitation Skills and Group Work

## **INTERAGENCIES**

The Macarthur Interagency was established in 2003 and meetings are held quarterly with the venue rotated throughout the Macarthur region.

Campbelltown & Wollondilly Interagencies have been under the umbrella of Sector Connect since late 2001. Meetings have continued to be held monthly, except in those months when the Macarthur Interagency is held. A big “Thank you” to Campbelltown City Council and Wollondilly Shire Council for providing the venues for both of these Interagencies.

A brochure has been produced outlining dates and venues for all Interagencies known to the forum and continues to be updated as circumstances change.

### **Interagency Information**

#### **Campbelltown** (average attendance 18)

Guest Speakers included:

Cara Pring	Campbelltown City Council
Jon O’Brien	Cancer Council NSW
Angela Lonergan	Campbelltown City Council
Kristen Daghish	Attorney Generals’ Department
Prue Hodgson	Australian Rail Track Corp
Donna Bevan	Connect Consulting

#### **Wollondilly** (average attendance 13)

Guest Speakers included:

Greg McCullough	Australian Education & Training Services
Diane McLeod	Breast Screen Sydney South West
Vivi Koutsounadis	Ethnic Child Care Family & Community Coop
Tracey Cremming	NSW Attorney Generals’ Dept

#### **Macarthur** (average attendance 24)

Guest Speakers included:

Kristie Brown & Dev Mukherjee	NCOSS – Sector Policy Officers
Diane McLeod	Breast Screen SSW

## **Macarthur Youth Services Network**

Sector Connect also took on the facilitation on the Macarthur Youth Services Network at the conclusion of 2007.

MYSN ceased being an incorporated body and there are no longer any membership fees paid by services that attend. The venue and chair for these meetings is rotated across the region for each meeting. Meetings are active and collaborative. Attendance is great with average numbers around 16.

Guest Speakers included:

Jon O'Brien	Cancer Council NSW
Jaye Toole	MDS Training Centre
Jon Prior	My Gateway
Jane McIvor & Lou Bacchiella	Consultant Youth Sector Development Model
Christine Sedgwick	Young Carers Program, SWS Commonwealth Carer Respite Centre
Brenda Baley	PIAC & Amnesty International Representative
Kristen Daghish	Attorney Generals' Department

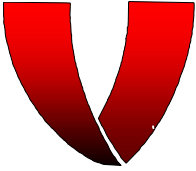
## **Partnerships**

In 2008-2009 the Training Project has had the pleasure of working in partnership with the following groups on various projects:

- Campbelltown TAFE Welfare Section
- Western Sydney Community Forum
- Compeer Macarthur Wingecarribee
- Campbelltown City Council
- Camden Council
- Wollondilly Shire Council
- Volunteering Macarthur
- Families NSW
- Muru Nanga Mai
- Tri Community Exchange
- Macarthur Disability Services- HACC & Training Centre
- Nursing Group
- School of Volunteer Management
- Camden Community Connections
- Mental Health Council of Australia
- My Gateway
- AFFORD

*Patricia Ceulen*

Training & Resource Officer



## **Project Report**

**By**

**Ven Andrews (Volunteer Coordinator)**

Volunteering Macarthur (VM) is funded by Department of Families, Housing, Community Services and Indigenous Affairs (FaHCSIA) under the Volunteer Management Program (VMP).

Volunteering Macarthur (VM) offers a volunteer matching service across a broad range of organisations, successfully placing 154 volunteers from January 2009 to date. Promotional activities have involved the following: community events, expos, bi-monthly newsletters, radio and newspaper articles. VM also uses networks and inter-agencies to promote our role in the community. VM provides assistance to community organisations and has registered several new organisations through promotion at community events and networking. One to one training with organisations improves their understanding of volunteer needs, increasing their skill and their capacity to offer more volunteer opportunities.

VM has organised / participated in:

Youth Mentoring Committee, meeting on an ongoing basis to discuss youth issues within the community,

VM has been involved in the Midnight Basketball program recruiting volunteers in various positions: Team Managers, Scores, Bus Assistance, Catering, General Supervisors working together with youth giving them an opportunity to play in a basketball tournament whilst attending an educational workshop on the night.

VM thanked organisations across Macarthur with a morning tea for National Volunteer Week.

VM has delivered talks on the benefits of volunteering at Minto Access point, Claymore Neighbour Aid, Airs Enterprise Centre, and various Job Networks to people interested in volunteering and organisations looking for volunteers.

VM attended a Volunteer Development Conference in Sydney, with guest speakers and workshops covering short term innovative projects, engaging the next generation, disability awareness, development of cohesive and diverse teams of volunteers, regional issues, and getting the most out of volunteering.

VM received CDSE funding for LR drivers, VM to train 3 LR drivers to assist community organisations to drive community buses for the Macarthur region.

VM meets 4 times a year with the Volunteer Centre Network (VCN), networking and working together with all volunteer resource centres across NSW.

VM has developed and implemented strategies to facilitate and meet the needs of the following groups: Indigenous and Torres Strait Islanders, young people and those over 55 seeking short term volunteering activities, Culturally and Linguistically Diverse groups, people in rural and remote locations, corporates, and spontaneous volunteers. VM has promoted volunteering at various events, expos, inter-agencies, and Go Volunteer website.

Significant outcomes and highlights this year have been placing people into volunteer roles, providing a solution for people needing to give back and improving their self worth, placing of over 55s into rewarding roles given their age or health related difficulties in helping find employment. Working with the 5 housing estates across Macarthur, engaging people of the communities, getting to know them, and placing them into volunteer roles to further skills. Engaging youth through volunteer supported activities such as Midnight Basketball.

I would like to thank John, Carol, Maureen, Pam, Jacqui and Luc for the endless work. Carol what would Volunteering Macarthur do without your brilliant skills and expert interviewing skills every week, Luc for the great submission writing, Maureen for the jobs no one has the time for, John for the endless maintenance and huge improvements to our building, Jacqui for the tireless minutes at MacUnity, and Pam for the diverse work with Sector Connect and Volunteering Macarthur, not to mention the smiles and the morale you have all bought to us. **Thankyou**

I look forward to working with the wonderful volunteers and staff at Sector Connect coordinating the Volunteer Project.

## **Families NSW Project**

### **Report by Deborah Knoke, Facilitator – Macarthur/Wingecarribee**

---

The NSW Department of Community Services (DoC's) Families NSW program is a prevention and early intervention strategy for families expecting a baby or for families with children 0-8 years. As Facilitator for Families NSW during the past year I have provided the following support for local community sector workers, who work within Macarthur & Wingecarribee.

- Bi monthly facilitation of the Macarthur Child & Family Interagency meetings
- Provision to over 120 data base contacts regarding relevant information , training, networking opportunities & community information via email and during interagency meetings
- General networking with Macarthur & Wingecarribee family related organisations, local councils, agencies and service groups
- Attend the DoC's Families NSW Project Management (PMG) meetings on behalf of the interagency and Families NSW funded projects
- Attend other meetings, forums, interagencies and various functions of community organisations working with children and families across the regions where possible throughout the year
- Provide further support to community workers through the coordination and delivery of relevant service training days and forums to enhance workers confidence, skills and abilities
- Coordinated and facilitated sub working groups, which interlink with the interagency, relevant to the priorities set down in the local action plan as in The CALD Working Group
- Assisted with the coordination and staging of the recent Macarthur Future Food Forum

#### Project highlights for 2008/09

- Informative non formal interagencies meetings, that provides opportunities for information sharing, working in partnership and networking. These meetings are rotated across the Macarthur and Wingecarribee LGA areas.
- During the year through the interagency meetings we have also made welcome a number very informative guest speakers
- Also through the year I have been able to obtain many free resources as in fact sheets and DVD's etc. For distribution at interagency meeting and training sessions, such as "Training on the Run" for the benefit of workers

During 2009 I have coordinated and attended some very successful forums, training events and information days including two new types of training delivery concepts

- Looking through the Telescope (Child Development/Child Welfare 2 day training)  
Held in March and September- (New training concept)
- An Introduction to Aboriginal Cultural Awareness Morning
- An Aboriginal Cultural Awareness Training Day
- Assisted in promotion of a Workers Leadership training Day held in Moss Vale
- Challenging Behaviours - 2 workshop
- Attended the MACNET Information Exchange Day
- Attended the Wollondilly Shire Council Transport Forum
- Assisted with coordination – DoC's Early Literacy Forum, Campbelltown
- Coordinated The Brief Solution Focused Therapy in the Real World 2 day workshop

- Coordinated the following Training on the Run Session (New concept Training)
  - It takes a Village
  - Strengthening Families
- Assisted with the coordination of the Parenting across Cultures 1 day workshop
- Attended and held an information stand in support of Community Links Wollondilly's Big Family Day Out held in August
- Assisted in the coordination of the Commission for Young Persons Child Safe – Child Friendly one day workshop
- Coordinated the Results Based Accountability Training (RBA) 2 day training for Families NSW funded services
- Forthcoming training until the end of 2009
  - How to run a successful "Community Event"
  - "Workers Wellbeing" Day
  - The effects of Smoking in Pregnancy

During 2010 I hope to enhance further our interagency meetings. I also wish to strengthen the Macarthur Child & Family Interagency membership and hope to build on the successes of our Families NSW forums and training topics already held this year.

Working in support of our local child and family workers, who working at a community level will in turn assist and support our regions children and their families.

**Deborah Knoke**

# Muru Nanga Mai

---



## **Our Dreaming Place Family Healing Project Yulang Ngalaya Project**

My name is Leo Dynevor. I am a Kullilla / Wakka Wakka man. Muru Nanga Mai has a holistic healing program, the Family Healing project, that is working towards achieving social and emotional well-being, not only for the Men, Women and Youth group participants but for the whole of the Aboriginal community. My main objective was to get Muru Nanga Mai recognised again and build up the profile in the Aboriginal and non-Aboriginal communities.

In the last 6 months we have gradually staked a claim back in the community. The interests around the philosophies of Muru Nanga Mai are again in progress and will continue to build momentum in the coming years. The Muru Nanga Mai board have solidified together throughout the year. The direction looks promising for Muru Nanga Mai and the Aboriginal community. There is an Annual General Meeting coming up on the 9<sup>th</sup> December 2009. We have interest from new members to be a part of the Board.

The network groups in the community continue to construct relationships on a personal and working professional level. Muru Nanga Mai is associated with the following Aboriginal and non-Aboriginal organisations both government and non-government:

- Aboriginal Employment Strategy
- Tharawal Local Aboriginal Lands Council
- Tharawal Aboriginal Corporation
- Campbelltown Family Support Service – NABU Aboriginal Team
- Campbelltown City Council
- Centrelink
- Campbelltown Drug & Alcohol Team
- Macarthur Legal Service
- NSW Police Campbelltown Area Command
- Burnside
- Locals High Schools & Public Schools
- Department of Housing
- Minto Access Point – MTC Solutions
- Working Together In Minto – WTIM
- Camden Council
- Wollondilly Council
- Community Links

Having these networks enables Muru Nanga Mai to be more effective in the community. Partnerships have developed and will continue in the future.

Muru Nanga Mai have secured funding through FaHCSIA's Community Support Service program to deliver the Yulang Ngalaya project over the next 3 years which will support Aboriginal community members and their families by providing links and referrals to a range of mainstream and Aboriginal services which may include welfare and social support, family violence, health (including drug and alcohol services), housing, child care and legal. The role will also entail the development and fostering of relationships with other service providers through promoting access and pathways to their services.

The Yulang Ngalaya project aims to build on successful elements of the former CDEP program, by linking Aboriginal people and their families to other services and support in their region.

With this new program, we have employed Chad Ritchie a Dunghutti man. Chad's role will be the Aboriginal Liaison Officer aligned with the Family Healing Project. He is successfully engaging in his new role and will bring a new approach to ensure our groups continue to flourish.

I am Team Leader for the Yulang Ngalaya and Family Healing projects, a leadership and supervisory role which I am looking forward to over the next few years.

One of our major projects within Muru Nanga Mai is the function of the Mens Group. We are trying to expand the group to cater the community. The following is proposed:

- New terms of reference
- Structural chart (with portfolios)
- Partnerships
- Funding
- Functions

Functions will contain the following:

- Cultural
- Educational
- Mentoring
- Social
- Employment
- Health
- Training
- Enterprise / Development

These functions will be run by committee members as a portfolio to target the needs and expectations of the Aboriginal & Torres Strait Islander men in the region.

It provides opportunity for men to play a more active role in their families and community, to also compliment the good work women are doing in the community.

The first step for Muru Nanga Mai to establish themselves back in to the community was putting on a Community dinner. It was held in NAIDOC week, to build community harmony, self belonging and a way to share our culture through food and dance. The night was successful and in return did open opportunity for a number of partnerships to develop.

The partnership between Muru Nanga Mai and Sector Connect remains as strong as ever. It has been very positive and we are establishing common ground and working as a whole to benefit the community.

My vision for Muru Nanga Mai for 2010 is to be well established, the groups running smoothly, the Yulang Ngalaya project taking a strangle hold on the community and to see that Muru Nanga Mai pave a better direction for the Aboriginal community.

I would like to thank the following for their faith and support in me:

Muru Nanga Mai Board, Jane McIvor, Cris McFarlane, Gavin Mate, members of the Aboriginal community.

I hope you all have pleasant end of year and the festive season be enjoyable for both you and your families.

Leo Dynevor  
Team Leader  
Muru Nanga Mai

## **Election of Management Committee**

---

### **As per Rule 13.5 of Sector Connect's Constitution:**

“There shall be an election of half the members of the Management Committee each year at the Annual General Meeting.”

#### Resignations:

Fiona Devine	Wollondilly Community Representative	Vice President
Mark Populin	Interchange Wingecarribee	Treasurer

#### 1<sup>st</sup> Year Position Continuing:

Gloria Bates	MTC Work Solutions	Committee Member <sup>3</sup>
Mark Populin	Interchange Wingecarribee	Committee Member <sup>4</sup>
Noelene Rudolph	Camden Council	Secretary

#### 2<sup>nd</sup> Year Position Retirement:

Bruce McCausland	Campbelltown City Council	President
Rachel Bennewitz	AFFORD	Committee Member <sup>1</sup>
Annick Leach	YWCA NSW	Committee Member <sup>2</sup>
Cris McFarlane	Sector Connect Incorporated	Public Officer

As at 15<sup>th</sup> October 2009 the following applications were received for the Management Committee:

#### Re-Standing:

Rachel Bennewitz	AFFORD
Fiona Devine	Wollondilly Community Representative
Annick Leach	YWCA NSW

#### New Applications:

Alison Croall	Community Representative
Robyn Straub	Tharawal Aboriginal Services
Sharni Rowe	Macarthur Credit Union

Bruce McCausland, the retiring President, will not be re-standing for a position on the Management Committee.

## Treasurer's Report

---

On behalf of the Management Committee of Sector Connect Incorporated I would like to acknowledge that the summarised financial report comprising of the income statement, balance sheet and accompanying notes for the financial year 30<sup>th</sup> June 2009 is a true representation of the financial affairs of the organisation.

The consolidated operating result for the financial year was a deficit of \$4,300.35.

The total income for the year of all programs was \$589,215.53, compared with \$431,750.81 for the previous year, an increase of 36%.

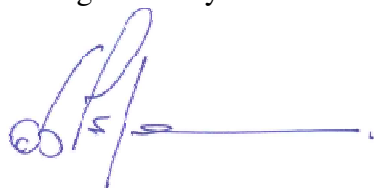
This increase is mainly the result of:

- Increased DoCS and FaHCSIA Grants for existing programs (2%);
- Additional programs, being the IMB Foundation, Youth Sector Development and Community Sector Development (28%); and
- Fundraising/donations (6%)

Sector Connect has been able to manage their cash by investing in three term deposits, totalling \$250,000 capitalising on high interest rates being offered. Explanation on the allocation of this money is detailed on the Balance Sheet.

Structured reporting with comparisons to project budgets helps to keep a tight control on all expenditures. This ensures that all projects remain within the financial guidelines.

On behalf of the committee I thank our Auditors, Accountcorp, for their co-operation and assistance throughout the year.



Treasurer 2009

**Sector Connect Inc**

Financial Statements  
For the year ended 30 June 2009

Accountcorp Group Services  
The Terraces  
1/1 Iolanthe Street, Campbelltown 2560

Phone: 02 4625 9411 Fax: 02 4628 7449  
Email: [access@accountcorp.com.au](mailto:access@accountcorp.com.au)

**Contents**

Income and Expenditure Statement

Balance Sheet

Notes to the Financial Statements

Statement by Members of the Committee

**Sector Connect Inc**  
**Income and Expenditure Statement**  
**For the year ended 30 June 2009**

	2009	2008
	\$	\$
<b>Income</b>		
Grants & funding	84,901.37	52,212.90
DOCS - one off funding	37,000.00	4,443.00
Grants & funding - DOCS	366,475.00	307,459.00
Donations	1,398.75	1,200.00
Membership fees	3,099.25	1,580.00
Other income	62,282.04	49,341.82
CDSE	6,000.00	6,000.00
Training workshops	9,151.51	1,286.28
Hire income	3,566.34	2,575.02
Interest received	15,341.27	5,652.79
Total income	<u>589,215.53</u>	<u>431,750.81</u>
<b>Expenses</b>		
Accounting & audit fees	3,580.00	2,960.00
Administration expenses	8,887.85	9,747.71
Advertising and promotion	4,850.84	2,336.01
Agency day	221.41	-
Arabic group	-	6,964.01
Bank Fees And Charges	1,654.50	1,397.50
CALD Forum	721.68	-
Catering expenses	8,474.53	1,585.48
Cleaning/rubbish removal	20.00	10.00
Contractors fees	39,839.27	2,355.00
Cultural awareness	1,789.47	1,590.42
Depreciation - plant	9,566.83	7,365.27
Disabilities	11.59	4,698.36
Electricity	462.31	241.45
Entertainment	-	136.36
Filing Fees	346.00	126.00
Furniture & equipment	7,865.57	1,992.09
Furniture & equipment - set up costs	-	11,971.24
Gifts	1,050.64	790.01
Hire of venues	617.28	81.82
Insurance	11,331.92	8,165.09

These financial statements are unaudited. They must be read in conjunction with the attached Accountant's Compilation Report and Notes which form part of these financial statements.

**Sector Connect Inc**  
**Income and Expenditure Statement**  
**For the year ended 30 June 2009**

	2009	2008
	\$	\$
Mens group	76.77	243.89
Management fees	49,479.38	37,354.66
MYSN	-	96.82
Meeting expenses	2,523.45	3,165.96
Motor vehicle expenses	27.27	-
OH & S	-	142.20
Open day	1,745.21	-
Playgroup	314.00	-
Postage	978.61	534.23
Printing & stationery	4,816.11	4,159.64
Program costs	12,754.61	212.27
Provision for employee entitlements	5,404.00	7,973.22
Removal expenses	36.36	409.10
Rent on land & buildings	16,109.12	15,019.09
Repairs & maintenance	8,698.97	3,342.00
Salaries - ordinary	298,647.08	229,020.38
Security	366.00	291.14
Staff amenities	1,025.61	1,104.70
Staff training	4,162.32	2,202.86
Subscriptions & memberships	1,214.59	2,126.51
Sundry expenses	-	10.92
Superannuation	25,054.83	19,454.89
Supervision	1,063.63	1,446.25
Telephone	10,930.13	11,046.27
Training fees	34,810.27	7,450.00
Travel, accom & conference	654.45	230.68
Web design & expenses	1,163.63	630.41
Womens group	321.02	1,805.64
Workers compensation	9,392.22	7,435.43
WTIM	454.55	-
Total expenses	<u>593,515.88</u>	<u>421,422.98</u>
<b>Profit (loss) from ordinary activities before income tax</b>	<b>(4,300.35)</b>	<b>10,327.83</b>
Income tax revenue relating to ordinary activities	-	-
<b>Net profit (loss) attributable to the association</b>	<b>(4,300.35)</b>	<b>10,327.83</b>
<b>Total changes in equity of the association</b>	<b>(4,300.35)</b>	<b>10,327.83</b>

These financial statements are unaudited. They must be read in conjunction with the attached Accountant's Compilation Report and Notes which form part of these financial statements.

**Sector Connect Inc**  
**Income and Expenditure Statement**  
**For the year ended 30 June 2009**

	2009	2008
	\$	\$
Opening retained profits	211,294.36	200,966.53
Net profit (loss) attributable to the association	<u>(4,300.35)</u>	<u>10,327.83</u>
<b>Closing retained profits</b>	<b><u><u>206,994.01</u></u></b>	<b><u><u>211,294.36</u></u></b>

---

These financial statements are unaudited. They must be read in conjunction with the attached Accountant's  
Compilation Report and Notes which form part of these financial statements.

**Sector Connect Inc**  
**Balance Sheet As At 30 June 2009**

	Note	2009 \$	2008 \$
<b>Current Assets</b>			
Cash assets	2	415,672.78	369,736.07
Receivables	3	6,020.00	2,510.00
Other	4	12,363.44	8,566.24
<b>Total Current Assets</b>		<b>434,056.22</b>	<b>380,812.31</b>
<b>Non-Current Assets</b>			
Property, plant and equipment	5	6,347.60	11,114.43
<b>Total Non-Current Assets</b>		<b>6,347.60</b>	<b>11,114.43</b>
<b>Total Assets</b>		<b>440,403.82</b>	<b>391,926.74</b>
<b>Current Liabilities</b>			
Payables	6	22,809.70	5,677.07
Current tax liabilities		11,988.89	19,089.20
Provisions	7	23,422.22	18,018.22
Other	8	175,189.00	137,847.89
<b>Total Current Liabilities</b>		<b>233,409.81</b>	<b>180,632.38</b>
<b>Total Liabilities</b>		<b>233,409.81</b>	<b>180,632.38</b>
<b>Net Assets</b>		<b>206,994.01</b>	<b>211,294.36</b>
<b>Members' Funds</b>			
Retained profits		206,994.01	211,294.36
<b>Total Members' Funds</b>		<b>206,994.01</b>	<b>211,294.36</b>

These financial statements are unaudited. They must be read in conjunction with the attached Accountant's Compilation Report and Notes which form part of these financial statements.

**Sector Connect Inc**  
**Notes to the Financial Statements**  
**For the year ended 30 June 2009**

---

**Note 1: Statement of Significant Accounting Policies**

This financial report is a special purpose financial report prepared in order to satisfy the financial reporting requirements of the Associations Incorporations Act. The committee has determined that the association is not a reporting entity.

The report has been prepared in accordance with the requirements of the Associations Incorporation Act and the following Australian Accounting Standards:

AASB 1031: Materiality

No other Australian Accounting Standards or other authoritative pronouncements of the Australian Accounting Standards Board have been applied.

The financial report has been prepared on an accruals basis and is based on historic costs and does not take into account changing money values, or except where specifically stated, current valuations of non-current assets.

The following specific accounting policies, which are consistent with the previous period unless otherwise stated, have been adopted in the preparation of this financial report:

**(a) Depreciation of property, plant & equipment**

The depreciable amount of fixed assets with a cost > \$3,000 are depreciated over the useful life of the assets to the association commencing from the time the asset is held ready for use.

In prior years, fixed assets with a cost > \$1,000 were depreciated over their useful life.

**Sector Connect Inc**  
**Notes to the Financial Statements**  
**For the year ended 30 June 2009**

	<b>2009</b>	<b>2008</b>
<b>Note 2: Cash assets</b>		
Bank accounts:		
Cash At Bank	164,609.18	269,536.07
Fixed Term Deposit	100,000.00	100,000.00
Fixed Term Deposit	100,000.00	-
Fixed Term Deposit	50,000.00	-
Other cash items:		
Cash on hand	1,063.60	200.00
	<b>415,672.78</b>	<b>369,736.07</b>
	<b>415,672.78</b>	<b>369,736.07</b>
 <b>Note 3: Receivables</b>		
<b>Current</b>		
Trade debtors	6,020.00	2,510.00
	<b>6,020.00</b>	<b>2,510.00</b>
	<b>6,020.00</b>	<b>2,510.00</b>
 <b>Note 4: Other Assets</b>		
<b>Current</b>		
Prepayments	3,925.94	4,424.57
Other	8,437.50	4,141.67
	<b>12,363.44</b>	<b>8,566.24</b>
	<b>12,363.44</b>	<b>8,566.24</b>
 <b>Note 5: Property, Plant and Equipment</b>		
Plant and equipment:		
- At cost	9,669.00	26,598.92
- Less: Accumulated depreciation	(3,321.40)	(15,484.49)
	6,347.60	11,114.43
	<b>6,347.60</b>	<b>11,114.43</b>

These financial statements are unaudited. They must be read in conjunction with the attached Accountant's Compilation Report and Notes which form part of these financial statements.

**Sector Connect Inc**  
**Notes to the Financial Statements**  
**For the year ended 30 June 2009**

	2009	2008
<b>Note 6: Payables</b>		
Unsecured:		
- Trade creditors and accruals	22,809.70	5,677.07
	22,809.70	5,677.07
	22,809.70	5,677.07

**Note 7: Provisions**

**Current**

Employee entitlements*	23,422.22	18,018.22
	23,422.22	18,018.22

* Aggregate employee entitlements liability	23,422.22	18,018.22
---	-----------	-----------

There were 7 employees at the end of the year

**Note 8: Other Liabilities**

**Current**

Advance payments	175,189.00	137,847.89
	175,189.00	137,847.89

---

These financial statements are unaudited. They must be read in conjunction with the attached Accountant's Compilation Report and Notes which form part of these financial statements.

**Sector Connect Inc**  
**Statement by Members of the Committee**  
**For the year ended 30 June 2009**

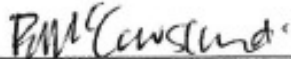
---

The Committee has determined that the association is not a reporting entity and that this special purpose financial report should be prepared in accordance with the accounting policies outlined in Note 1 to the financial statements.

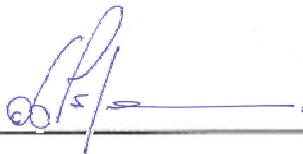
In the opinion of the Committee the Income and Expenditure Statement, Statement of Financial Position, and Notes to the Financial Statements:

1. Presents fairly the financial position of Sector Connect Inc as at 30 June 2009 and its performance for the year ended on that date.
2. At the date of this statement, there are reasonable grounds to believe that the association will be able to pay its debts as and when they fall due.

This statement is made in accordance with a resolution of the Committee and is signed for and on behalf of the Committee by:



\_\_\_\_\_  
President



\_\_\_\_\_  
Treasurer



## INDEPENDENT AUDITOR'S REPORT TO THE MEMBERS OF SECTOR CONNECT INC

### Report on the Financial Report

We have audited the accompanying financial report, being a special purpose financial report, of Sector Connect Inc, which comprises the balance sheet as at 30 June 2009, and the income and expenditure statement for the year then ended, a summary of significant accounting policies, other explanatory notes and the statement by members of the committee.

### The Responsibility of the Board for the Financial Report

The Board of the association are responsible for the preparation and fair presentation of the financial report and have determined that the accounting policies described in Note 1 to the financial statements which form part of the financial report are appropriate to meet the financial reporting requirements of the constitution and are appropriate to meet the needs of the members. The Board's responsibility also includes establishing and maintaining internal control relevant to the preparation and fair presentation of the financial report that is free from material misstatement, whether due to fraud or error; selecting and applying appropriate accounting policies; and making accounting estimates that are reasonable in the circumstances.

### Auditor's Responsibility

Our responsibility is to express an opinion on the financial report based on our audit. No opinion is expressed as to whether the accounting policies used, as described in Note 1, are appropriate to meet the needs of the members. We conducted our audit in accordance with Australian Auditing Standards. These Auditing Standards require that we comply with relevant ethical requirements relating to audit engagements and plan and perform the audit to obtain reasonable assurance whether the financial report is free from material misstatement.

An audit involves performing procedures to obtain audit evidence about the amounts and disclosures in the financial report. The procedures selected depend on the auditor's judgment, including the assessment of the risks of material misstatement of the financial report, whether due to fraud or error. In making those risk assessments, the auditor considers internal control relevant to the association's preparation and fair presentation of the financial report in order to design audit procedures that are appropriate in the circumstances, but not for the purpose of expressing an opinion on the effectiveness of the association's internal control. An audit also includes evaluating the appropriateness of accounting policies used and the reasonableness of accounting estimates made by the Board, as well as evaluating the overall presentation of the financial report.

The financial report has been prepared for distribution to members for the purpose of fulfilling the Board's financial reporting under the constitution. We disclaim any assumption of responsibility for any reliance on this report or on the financial report to which it relates to any person other than the members, or for any purpose other than that for which it was prepared.

We believe that the audit evidence we have obtained is sufficient and appropriate to provide a basis for our audit opinion.

**Ronald H Malafiej** FCPA, CFP®  
**Craig Odewahn** B.TAX

### Accountcorp Group Services

OFFICE 'The Terraces' 1/1 Iolanthe St  
Campbelltown

POSTAL P.O. Box 395 Campbelltown 2560

T +61 2 4625 9411  
F +61 2 4628 7449

### Independence

In conducting our audit, we have complied with the independence requirements of Australian professional accounting bodies.

### Auditor's Opinion

In our opinion, the financial report presents fairly, in all material respects, the financial position of Sector Connect Inc as at 30 June 2009 and of its financial performance for the year then ended in accordance with the accounting policies described in Note 1 to the financial statements.

### ACCOUNTCORP GROUP SERVICES



Ronald H Malafiej FCPA  
Partner  
Campbelltown

28 September 2009

Ronald H Malafiej FCPA, CFP®  
Craig Odewahn B.TAX

#### Accountcorp Group Services

OFFICE 'The Terraces' 1/1 Iolanthe St  
Campbelltown

POSTAL P.O. Box 395 Campbelltown 2560

T +61 2 4625 9411  
F +61 2 4628 7449

Thank you to all Committee Members  
and those retiring  
for all your support and hard work  
throughout the year.

Bruce McCausland (retired)  
Lyn Newton (resigned)  
Karin Vasquez (resigned)  
Joe Parker-Brooks (resigned)  
Julie Baturynsky (resigned)  
Ally Dench (resigned)

# Notes

---

# Notes

---